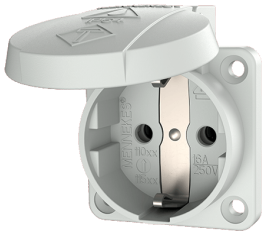


Panel mounted receptacle SCHUKO®

Part no. 11010



- for stationary use
- with hinged lid
- 3 plug-in terminals as connecting terminals for 1.5 – 2.5 mm²

Technical specifications

Ampere	16 A
Poles	2 p+E
Voltage	230 V
Connection technology	Plug-in terminals
Contact	standard
Protection type	IP 54
Shutter	false
Flange	50x50 mm
Fixing hole	38x38 mm
Weight	42 g
Declaration of Conformity	VDE, EAC, Kema

Drawing



Drawing
1 MB 410
Dim. in mm

Panel mounted receptacle SCHUKO®

Part no. 11011

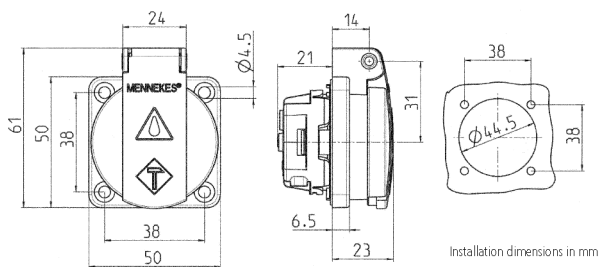


- for stationary use
- with hinged lid
- 3 plug-in terminals as connecting terminals for 1.5 – 2.5 mm²

Technical specifications

Ampere	16 A
Poles	2 p+E
Voltage	230 V
Connection technology	Plug-in terminals
Contact	standard
Protection type	IP 54
Shutter	false
Flange	50x50 mm
Fixing hole	38x38 mm
Weight	42 g
Declaration of Conformity	VDE, EAC, Kema

Drawing



Drawing
1 MB 410
Dim. in mm

Panel mounted receptacle SCHUKO®

Part no. 11012

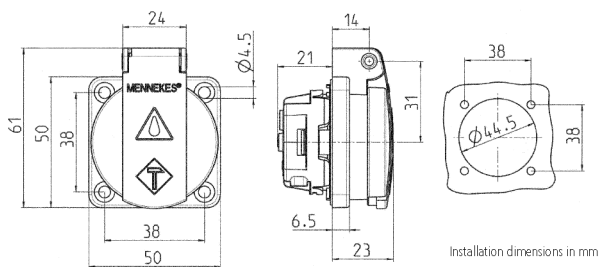


- for stationary use
- with hinged lid
- 3 plug-in terminals as connecting terminals for 1.5 – 2.5 mm²

Technical specifications

Ampere	16 A
Poles	2 p+E
Voltage	230 V
Connection technology	Plug-in terminals
Contact	standard
Protection type	IP 54
Shutter	false
Flange	50x50 mm
Fixing hole	38x38 mm
Weight	43 g
Declaration of Conformity	VDE, EAC, Kema

Drawing



Drawing
1 MB 410

Dim. in mm

Panel mounted receptacle SCHUKO®

Part no. 11013

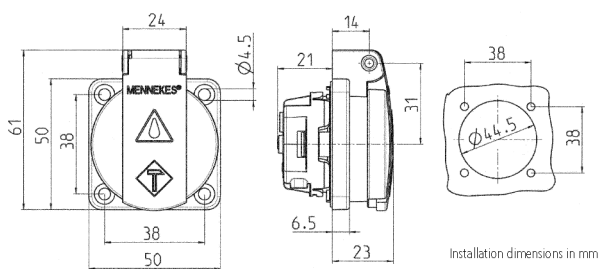


- for stationary use
- with hinged lid
- 3 plug-in terminals as connecting terminals for 1.5 – 2.5 mm²

Technical specifications

Ampere	16 A
Poles	2 p+E
Voltage	230 V
Connection technology	Plug-in terminals
Contact	standard
Protection type	IP 54
Shutter	false
Flange	50x50 mm
Fixing hole	38x38 mm
Weight	42 g
Declaration of Conformity	VDE, EAC, Kema

Drawing



Drawing
1 MB 410

Dim. in mm

Installation dimensions in mm

Panel mounted receptacle SCHUKO®

Part no. 11030

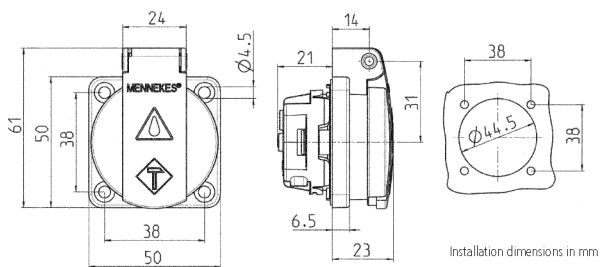


- for stationary use
- with hinged lid
- 3 screw terminals as connecting terminals for 1.5 – 2.5 mm²

Technical specifications

Ampere	16 A
Poles	2 p+E
Voltage	230 V
Connection technology	Screw terminals
Contact	standard
Protection type	IP 54
Shutter	false
Flange	50x50 mm
Fixing hole	38x38 mm
Weight	46 g
Declaration of Conformity	VDE, EAC, Kema

Drawing



Drawing
1 MB 410
Dim. in mm

Panel mounted receptacle SCHUKO®

Part no. 11031

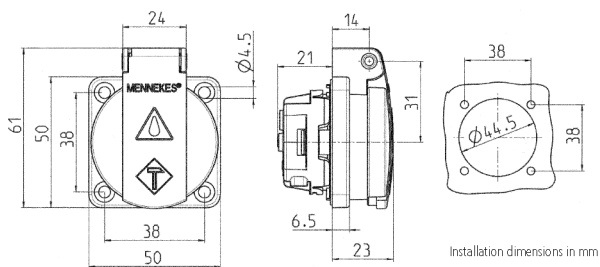


- for stationary use
- with hinged lid
- 3 screw terminals as connecting terminals for 1.5 – 2.5 mm²

Technical specifications

Ampere	16 A
Poles	2 p+E
Voltage	230 V
Connection technology	Screw terminals
Contact	standard
Protection type	IP 54
Shutter	false
Flange	50x50 mm
Fixing hole	38x38 mm
Weight	51 g
Declaration of Conformity	VDE, EAC, Kema

Drawing



Drawing
1 MB 410
Dim. in mm

Panel mounted receptacle SCHUKO®

Part no. 11032

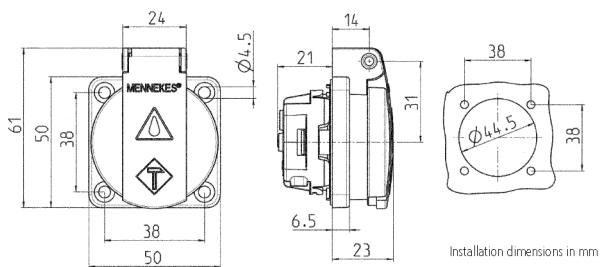


- for stationary use
- with hinged lid
- 3 screw terminals as connecting terminals for 1.5 – 2.5 mm²

Technical specifications

Ampere	16 A
Poles	2 p+E
Voltage	230 V
Connection technology	Screw terminals
Contact	standard
Protection type	IP 54
Shutter	false
Flange	50x50 mm
Fixing hole	38x38 mm
Weight	47 g
Declaration of Conformity	VDE, EAC, Kema

Drawing



Drawing
1 MB 410

Dim. in mm

Panel mounted receptacle SCHUKO®

Part no. 11033

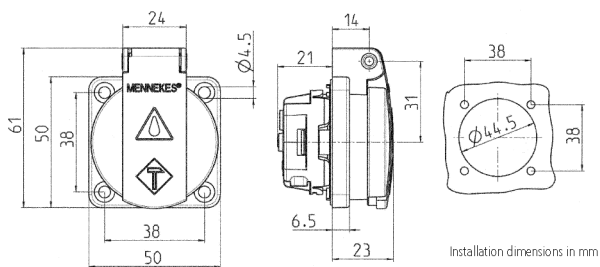


- for stationary use
- with hinged lid
- 3 screw terminals as connecting terminals for 1.5 – 2.5 mm²

Technical specifications

Ampere	16 A
Poles	2 p+E
Voltage	230 V
Connection technology	Screw terminals
Contact	standard
Protection type	IP 54
Shutter	false
Flange	50x50 mm
Fixing hole	38x38 mm
Weight	41 g
Declaration of Conformity	VDE, EAC, Kema

Drawing



Drawing
1 MB 410

Dim. in mm

Installation dimensions in mm

Panel mounted receptacle SCHUKO®

Part no. 11060



- with hinged lid
- 3 plug-in terminals as connecting terminals for 1.5 – 2.5 mm²
- other colours on request

Technical specifications

Ampere	16 A
Poles	2 p+E
Voltage	230 V
Connection technology	Plug-in terminals
Contact	standard
Protection type	IP 54
Shutter	true
Flange	50x50 mm
Fixing hole	38x38 mm
Weight	44 g
Declaration of Conformity	VDE, EAC, Kema

Drawing



Drawing
1 MB 410
Dim. in mm

Panel mounted receptacle SCHUKO®

Part no. 11061

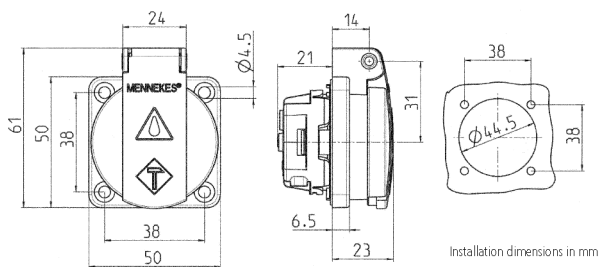


- with hinged lid
- 3 plug-in terminals as connecting terminals for 1.5 – 2.5 mm²
- other colours on request

Technical specifications

Ampere	16 A
Poles	2 p+E
Voltage	230 V
Connection technology	Plug-in terminals
Contact	standard
Protection type	IP 54
Shutter	true
Flange	50x50 mm
Fixing hole	38x38 mm
Weight	43 g
Declaration of Conformity	VDE, EAC, Kema

Drawing



Drawing
1 MB 410
Dim. in mm

Panel mounted receptacle SCHUKO®

Part no. 11081

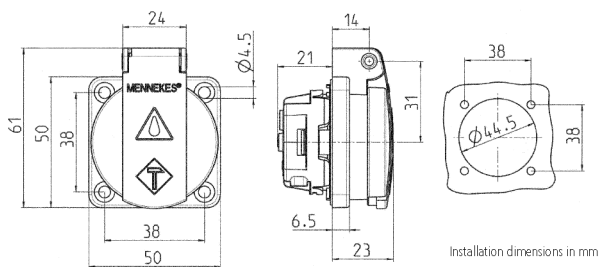


- with hinged lid
- 3 screw terminals as connecting terminals for 1.5 – 2.5 mm²
- other colours on request

Technical specifications

Ampere	16 A
Poles	2 p+E
Voltage	230 V
Connection technology	Screw terminals
Contact	standard
Protection type	IP 54
Shutter	true
Flange	50x50 mm
Fixing hole	38x38 mm
Weight	43 g
Declaration of Conformity	VDE, EAC, Kema

Drawing



Drawing
1 MB 410
Dim. in mm