

INSTITUTIONAL MEDIUM - DUTY



# 260 NBZ SERIES

70 ~ 120 KGS

In compliance to Korean Standard Specification

## Castor 260

Armor steel, double ballrace swivel path frame  
heat treatment. Finish: Black lacquer

40 Rig thickness: 2mm • Plate thickness: 2mm

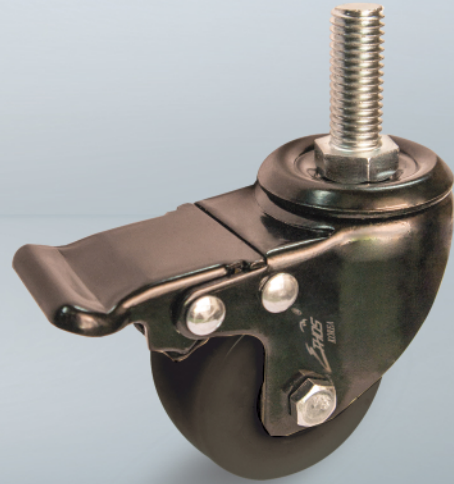
50 Rig thickness: 2.5mm • Plate thickness: 2.5mm

65 Rig thickness: 2.8mm • Plate thickness: 3.5mm

## Wheel NBZ

Solid Nylon, double precision ballbearing (no threadguards).

Black non-marking. Quiet rolling, abrasive, impact, water and  
chemical resistance. Hardness: 60D • Temperature: -30°C to +100°C



266 Metal Total Brake



Threaded stem	mm	mm	mm	mm	mm	mm	mm	mm	mm	mm	bearing	kgs
<b>261 NBZ 040 T12</b>	M12	30	63	20	41	28	6	30				70
<b>261 NBZ 050 T12</b>	M12	30	73	22	50	28	6	30				100
<b>261 NBZ 065 T12</b>	M12	30	90	30	65	28	10.1	30				120

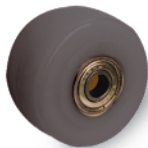
Remarks: T13 = 1/2" - 20 UNF x 30mm available by indent basis only



### Threaded Stem with Total-Brake

<b>266 NBZ 040 T12</b>	M12	30	63	20	41	28	6	30				70
<b>266 NBZ 050 T12</b>	M12	30	73	22	50	28	6	30				100
<b>266 NBZ 065 T12</b>	M12	30	90	30	65	28	10.1	30				120

Remarks: T13 = 1/2" - 20 UNF x 30mm available by indent basis only



Wheels	profile										
		mm	mm	mm	mm	mm	mm	bushing	mm	bearing	kgs
<b>NBZ 040</b>	Semi-Round	41	28	6	30	~	~	~	~		70
<b>NBZ 050</b>	Semi-Round	50	28	6	30	~	~	~	~		100
<b>NBZ 065</b>	Semi-Round	65	28	10.1	30	~	~	~	~		120