

## SOCKET SET (6pt.), with SOCKET HOLDER

Models **HS206**

Contents **6 Items**

Descriptions	Models
SOCKET (6pt.)	2S- 07, 08, 10, 12, 13, 14

- SH1206 with socket holder (6 items type)
- Package size : w196 x d61 x h42mm
- Weight : 0.16kg
- Qty./Carton : 1



Improved work efficiency by adopting a socket holder (aluminum type) that allows easy removal of the socket.



HS206

## SOCKET SET (6pt.), with SOCKET HOLDER

Models **HS210**

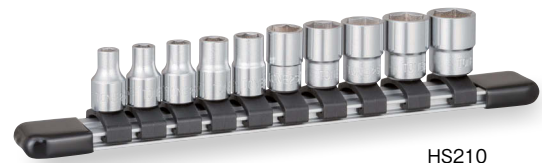
Contents **10 Items**

Descriptions	Models
SOCKET (6pt.)	2S- 05, 5.5, 06, 07, 08, 10, 11, 12, 13, 14

- SH1210 with socket holder (10 items type)
- Package size : w216 x d66 x h42mm
- Weight : 0.22kg
- Qty./Carton : 1



Improved work efficiency by adopting a socket holder (aluminum type) that allows easy removal of the socket.



HS210

## SOCKET SET (6pt.), with SOCKET HOLDER

Models **HS212**

Contents **12 Items**

Descriptions	Models
SOCKET (6pt.)	2S- 03, 04, 05, 06, 07, 08, 09, 10, 11, 12, 13, 14

- SH1212 with socket holder (12 items type)
- Package size : w271 x d136 x h37mm
- Weight : 0.31kg
- Qty./Carton : 1



Improved work efficiency by adopting a socket holder (aluminum type) that allows easy removal of the socket.



HS212

\* Socket holder is available for separate purchase. Please see P142 for details.

## SOCKET (6pt.)

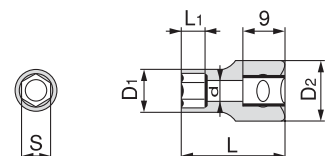
Models	Across Flat (mm)	Dimensions (mm)					Qty./Carton		Weight (g)
	S	D <sub>1</sub>	D <sub>2</sub>	L <sub>1</sub>	L	d	(Generally)	(Store Center)	
2S-03	3	6.0	13.0	3.0	21.0	2.0	10	6	7
2S-04	4	7.0	13.0	4.0	21.0	3.0	10	6	8
2S-4.5	4.5	7.0	13.0	4.0	21.0	3.5	10	6	8
2S-05	5	8.0	13.0	5.0	22.0	4.0	10	6	10
2S-5.5	5.5	8.5	13.0	5.0	22.0	4.0	10	6	10
2S-06	6	9.0	13.0	5.0	22.0	4.5	10	6	10
2S-07	7	11.0	13.0	6.0	22.0	5.0	10	6	20
2S-08	8	11.4	13.0	6.0	22.0	7.0	10	6	20
2S-09	9	13.5	13.0	6.0	22.0	7.0	10	6	20
2S-10	10	14.0	13.0	7.0	23.5	8.0	10	6	20
2S-11	11	15.0	13.0	7.0	23.5	9.0	10	6	20
2S-12	12	16.5	14.5	8.0	23.5	10.0	10	6	30
2S-13	13	18.0	16.0	10.0	23.5	10.0	10	6	30
2S-14	14	19.0	17.0	10.0	23.5	11.0	10	6	35



2S-03



2S-14



For hand tool **CAUTION**

- Do not use with power tools.