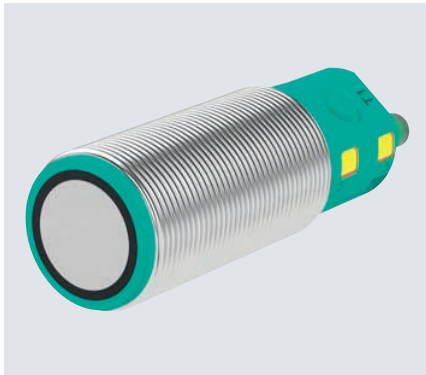


Cylindrical Ultrasonic Sensors

30GM-IO Series Diffuse Mode Sensors



Common Technical Data

Design	Straight head
Housing design	cylindrical
Switching element function	Normally-open/normally-closed (selectable)
Type of voltage	DC
Operating voltage (min)	10 V
Operating voltage (max)	30 V
Connection type	M12 connector plug
UL	■

For detailed data and description, see the datasheet. Further products can be found online at www.pepperl-fuchs.com.

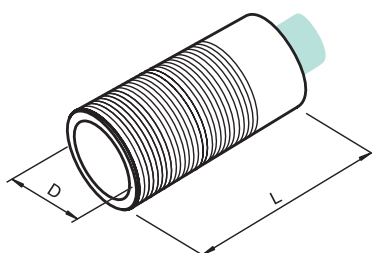
Model Number	Detection Range	Dead Band	Type of Output	Response Time [ms]	Switching Frequency	Length L	Diameter D
UC500-30GM-2EP-IO-V15	500 mm	30 mm	IO-Link, push-pull	25 ms	11 Hz	93 mm	30 mm
UC500-30GM-IUEP-IO-V15	500 mm	30 mm	IO-Link, analog current output, push-pull	25 ms	11 Hz	93 mm	30 mm
UC2000-30GM-2EP-IO-V15	2000 mm	90 mm	IO-Link, push-pull	65 ms	4 Hz	93 mm	30 mm
UC2000-30GM-IUEP-IO-V15	2000 mm	90 mm	IO-Link, analog current output, push-pull	65 ms	4 Hz	93 mm	30 mm
UC4000-30GM-2EP-IO-V15	4000 mm	200 mm	IO-Link, push-pull	115 ms	2 Hz	108 mm	40 mm
UC4000-30GM-IUEP-IO-V15	4000 mm	200 mm	IO-Link, analog current output, push-pull	115 ms	2 Hz	100 mm	40 mm
UC6000-30GM-2EP-IO-V15	6000 mm	350 mm	IO-Link, push-pull	140 ms	1.5 Hz	112 mm	73 mm
UC6000-30GM-IUEP-IO-V15	6000 mm	350 mm	IO-Link, analog current output, push-pull	140 ms	1.5 Hz	106 mm	73 mm

Highlights

- Simple integration in the control panel via IO-Link
- Integrated diagnostics and flexible parameterization
- Outstanding process reliability through direct access to process data and diagnostic data
- Wide array of graduated detection ranges

Brief Description

The 30GM-IO series diffuse mode sensors are the multifunctional solutions for a range of application scenarios, from fill level measurement and presence detection to object counting and distance measurement. They are incredibly simple to parameterize, either using the buttons on the sensor or via the IO-Link interface. The sensors can be integrated easily into the control environment via this communication channel to exchange both process and service data. Various sound beam widths can be set via teach-in to suit the respective detection application. The IP67 degree of protection ensures optimal availability at all times.



Accessories

BF 30	Mounting adapter, 30 mm
BF 30-F	Plastic mounting adapter, 30 mm
BF 5-30	Universal mounting bracket for cylindrical sensors with a diameter of 5 mm ... 30 mm
IO-Link-Master02-USB	IO-Link master, supply via USB port or separate voltage supply, LED indicators, M12 connector for sensor connection
M30K-VE	Plastic nuts with centering ring for vibration-decoupled mounting of cylindrical sensors
UVW90-K30	Ultrasonic deviation reflector
UVW90-M30	Ultrasonic deviation reflector
V15-G-2M-PVC	Single-ended female cordset, M12, straight, A-coded, 5-pin, PVC cable, gray