



# MACHINE VISION

VISION SYSTEMS - VISION SENSORS - VISION SOFTWARE

**COGNEX**

# THE GLOBAL LEADER

## IN MACHINE VISION AND INDUSTRIAL BARCODE READING

**Cognex<sup>®</sup>, the leading supplier of machine vision and industrial barcode reading solutions.**

With over 2 million systems installed in facilities around the world and over thirty seven years of experience, Cognex is focused on industrial machine vision and image-based barcode reading technology. Deployed by the world's top manufacturers, suppliers and machine builders, Cognex products ensure that manufactured items meet the stringent quality requirements of each industry.

Cognex solutions help customers improve manufacturing quality and performance by eliminating defects, verifying assembly and tracking information at every stage of the production process. Smarter automation using Cognex vision and barcode reading systems means fewer production errors, which equates to lower manufacturing costs and higher customer satisfaction. With the widest range of solutions and largest network of global vision experts, Cognex is the best choice to help you **Build Your Vision.<sup>™</sup>**

**\$806  
MILLION**  
2018 REVENUE

**OVER 37**  
YEARS IN THE BUSINESS

**500+**  
CHANNEL PARTNERS

GLOBAL OFFICES IN  
**20+ COUNTRIES**

**2,000,000+**  
SYSTEMS SHIPPED





# OPTIMIZE QUALITY, MINIMIZE WASTE, MAXIMIZE THROUGHPUT

Tens of thousands of applications worldwide inspect billions of products each day, many products that simply could not be manufactured without machine vision technology. Whether verifying the fill levels of soda bottles traveling on a conveyor, reading oil-stained codes on automotive parts or positioning touch screens on smartphones to micron-level accuracy, machine vision technology performs highly-detailed tasks on high-speed production lines.

Cognex comprehensive line of vision sensors and 2D and 3D vision systems all use machine vision technology to perform inspections but are engineered for different tasks.



**Vision Sensors**



**2D Vision**



**3D Vision**

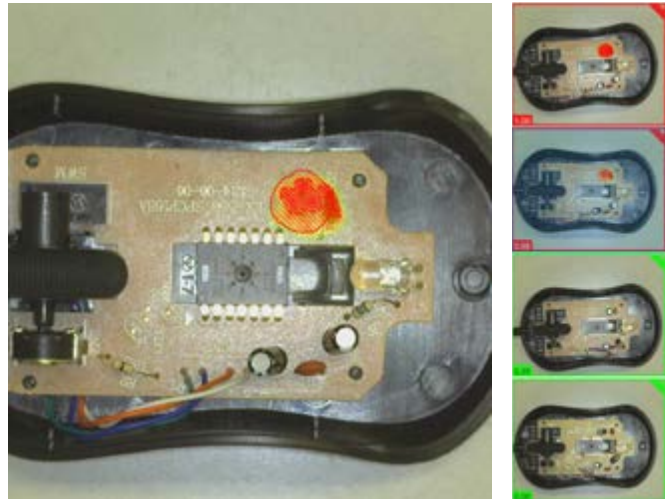
	Vision Sensors	2D Vision	3D Vision
<b>Presence/Absence</b>	✓	✓	✓
<b>Defect Detection</b>	✓	✓	✓
<b>Assembly Verification</b>	✓	✓	✓
<b>Cosmetic Inspection</b>		✓	✓
<b>Guide/Align</b>		✓	✓
<b>OCR/OCV</b>		✓	✓
<b>Code Reading</b>		✓	
<b>Gauge/Measure</b>		✓	✓

# INDUSTRY-LEADING VISION TECHNOLOGY



## Deep Learning

Deep learning technology uses neural networks that mimic human intelligence to distinguish anomalies, locate deformed parts and read challenging characters while tolerating natural variations in complex patterns. Deep learning complements traditional machine vision approaches, which struggle to appreciate variability and deviation between visually similar parts. In factory automation, VisionPro ViDi can now perform judgment-based part location, inspection, classification, and character recognition more effectively than humans or traditional machine vision solutions.

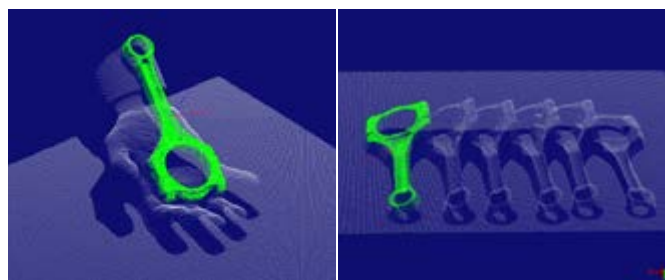


## Industry Leading Object Location

**PatMax RedLine™** is an accurate, highly repeatable tool that locates trained patterns no matter the size, rotation, or location of the target part. It is ideal for industries and applications that require large fields of view, high accuracy, large angle and scale tolerances, and multiple targets.



**PatMax® 3D** is an accurate 3D vision tool that locates trained patterns based on its 3D geometry under 6 degrees of freedom (X, Y, Z, Rx, Ry, Rz). It finds 3D objects within a 3D point cloud image and is ideal for locating and identifying objects which are tilted, stacked or not properly seated with a fixture.

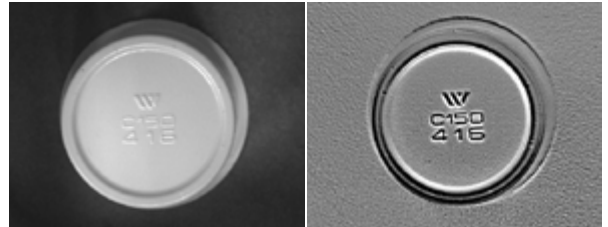
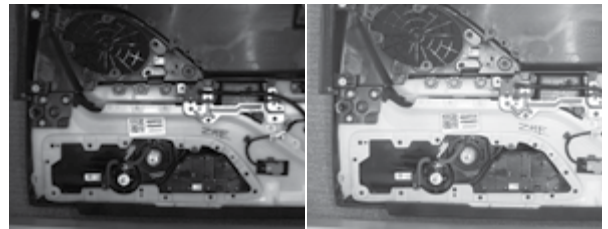




## Advanced Image Formation Technology

**HDR+** is a patent-pending technology that delivers a high-contrast, uniform image in a single acquisition for multi-point inspections of parts with varying depths of field and lighting conditions.

**SurfaceFX™** uses lighting and software algorithms to remove noise and clutter from the surface background and isolate features and defects that are recessed or embossed on parts. It highlights surface defects such as chips, wrinkles, punctures, stamped text, and codes so other vision tools can perform their tasks.



## High-Performance 3D Vision

Patent-pending 3D LightBurst technology acquires high-resolution 3D images at an unparalleled speed. It delivers a full field-of-view 3D image as fast as 200 milliseconds, allowing higher throughput and shorter cycle times for time-critical in-line applications.

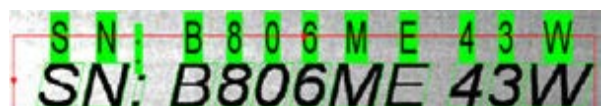
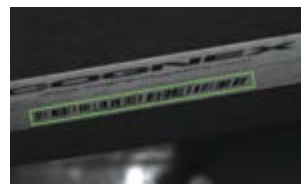


## Code Reading

**2DMax® with PowerGrid®** is a breakthrough algorithm and technology designed to read 2D codes with significant damage to or complete elimination of a code's finder or clocking pattern, or quiet zone.

**1DMax® with Hotbars®** is an algorithm and technology optimized for omnidirectional 1D barcode reading, decoding up to 10X the speed of a conventional barcode reader.

**OCRMax™**, a font-trainable Optical Character Recognition and Verification (OCR and OCV) tool, has set industry records for ease of use, read rates and speed in complex images. This powerful algorithm prevents misreads, handles process variations, and provides easy font management.





# 2D VISION SYSTEMS

Cognex In-Sight® 2D vision systems are unmatched in their ability to inspect, identify, and align parts. These self-contained, industrial-grade vision systems combine a library of advanced vision tools with high-speed image acquisition and processing. A wide range of models, including line scan and color systems, meet most price and performance requirements.



## In-Sight 7000 Series

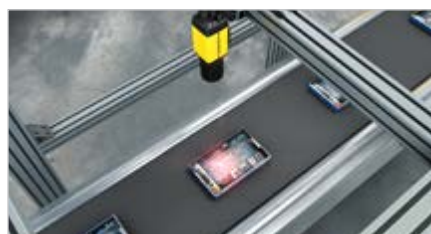
Combines modular integrated lighting and optics for optimal image formation with powerful vision tools and ease of use in a compact footprint for fast, accurate inspections on space-constrained production lines.



### RESOLUTION



### FEATURES



## In-Sight 8000 Series

Ultra-compact, standalone vision systems deliver industry-leading vision tool performance at PC speeds, all in the micro form factor of a typical GigE Vision camera.

### RESOLUTION





### FEATURES



# In-Sight 9000 Series

Rugged, ultra-high-resolution standalone vision systems equipped with a full suite of In-Sight vision tools solve high accuracy part location, measurement, and inspection applications. Line scan and area scan image acquisition options are available for imaging large continuously moving or stationary objects.

## RESOLUTION

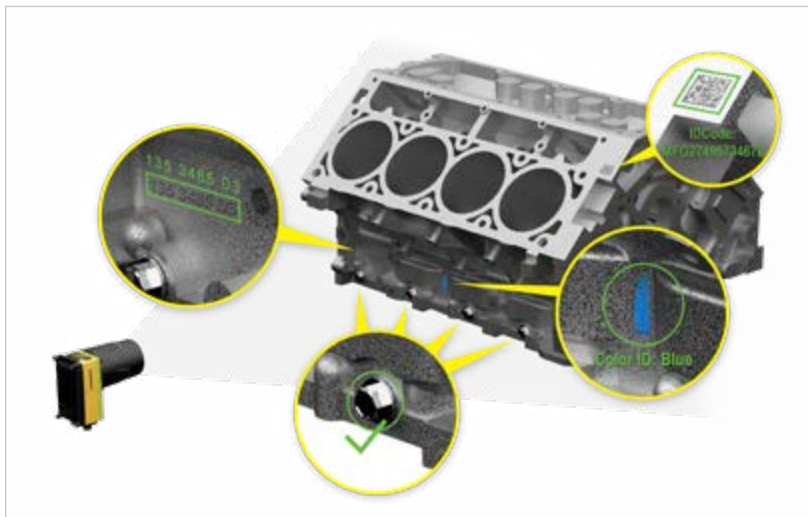
 Area Scan: Up to 12MP  
 Line Scan: Up to 32MP

## FEATURES

 IP67  
 Additional Storage

## In-Sight 9912 Area Scan

Standalone, ultra-high-resolution 12MP, vision system acquires and processes exceptionally detailed images for high accuracy part location, measurement, and inspection over a large area—even when mounted at longer distances.



## In-Sight 9902 Line Scan

Self-contained vision systems ideal for detailed inspections of large, cylindrical, or continuously moving objects. 1K and 2K modes deliver high-resolution images that can be used to detect even the smallest features and defects.



# VISION SENSORS

Vision sensors perform simple pass/fail applications that help ensure products and packaging manufactured on an automated production line are error-free and meet stringent quality standards. Cognex vision sensors provide highly reliable inspections thanks to powerful vision tools, integrated lighting, modularity, and an easy-to-use setup environment.

## In-Sight 2000 Series

Ideal for solving error-proofing applications, these vision sensors set new standards for value, ease of use, and flexibility and can adapt to virtually any production line environment.

### In-Sight 2000 Mini

All the power of the In-Sight 2000 vision sensor in an ultra-compact form factor allows users to deploy vision sensors in machines or production lines with limited mounting space.

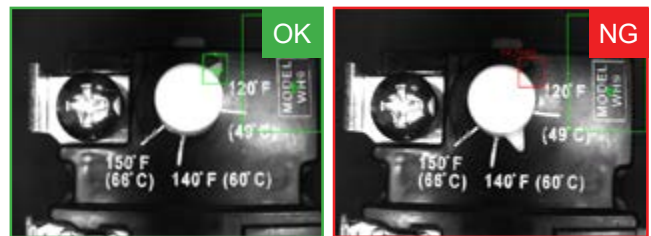
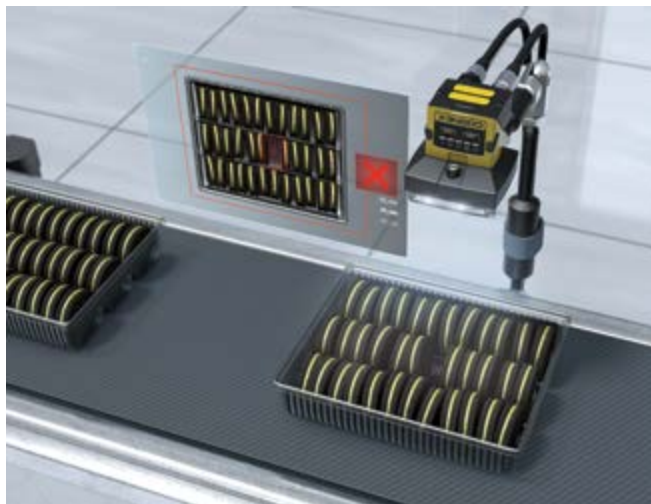


#### RESOLUTION

 **3.75  $\mu\text{m}^2$  pixel size**

#### FEATURES

-  Monochrome
-  Color
-  Integrated Lighting
-  Autofocus
-  IP65





# MODULAR DESIGN FOR MAXIMUM FLEXIBILITY

When it comes to factory automation, one size rarely fits all. That's why many In-Sight vision systems and vision sensors are designed with modular lights, lenses, and filters. These field-changeable and user-configurable options provide users with ultimate flexibility to customize the system for their specific application and easily adjust as needs change.



White, blue, red, and IR **LED lights** minimize the need for expensive external lighting and enhance specific features or text.



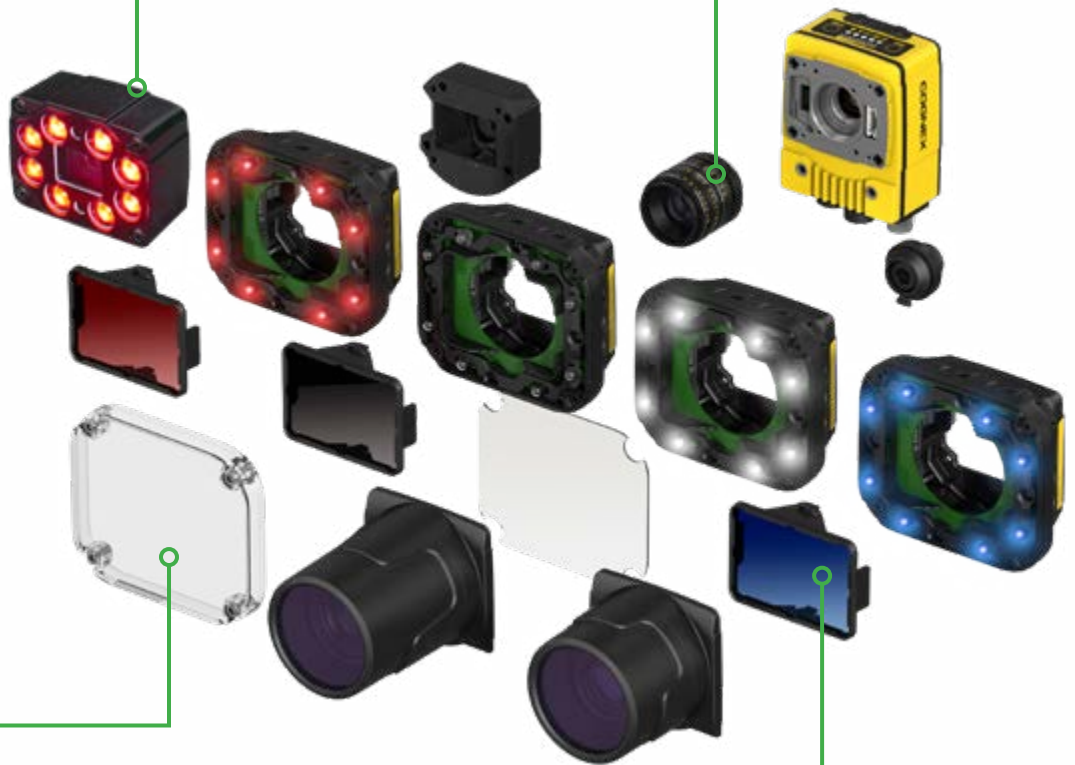
Original color image, ambient light



Monochrome camera image with blue light



Field changeable C-mount, S-mount, and autofocus lenses for best image resolution based on working distance.



**Polarizers** reduce glare or hot spots and enhance contrast so entire objects can be recognized.



No filter specular glare

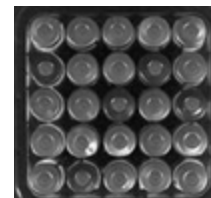


With a linear polarizer

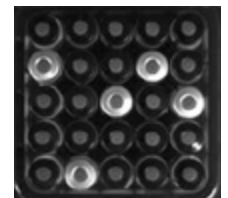
**Color filters** create contrast to lighten or darken features of the object.



Original color image



No filter



Blue Bandpass Filter

# IN-SIGHT

## 2D VISION SOFTWARE

### In-Sight Explorer

All In-Sight 2D products, from vision sensors to vision systems, are configured with the powerful, yet intuitive In-Sight Explorer software. The easy-to-use interface walks you step by step through the setup process and provides the power and flexibility of the vision spreadsheet for more difficult applications. In-Sight Explorer also offers the widest range of built-in communication protocols that interface directly to any PLC, robot, or HMI on the factory network.



### EasyBuilder

The EasyBuilder configuration environment guides users through a step-by-step setup process allowing both novice and experienced operators to configure vision applications quickly and easily on vision sensors and vision systems.

### Spreadsheet

Access to the spreadsheet provides ultimate application development flexibility without programming.

### Easy-to-deploy HMI

Cognex In-Sight sensors and systems offer multiple runtime visualization options, including VisionView — available as a ready-to-deploy LCD touch panel and as a PC application — and a platform independent Web HMI that runs in any internet browser. Both VisionView and the Web HMI allow users to view inspection images and results and to modify setup parameters.



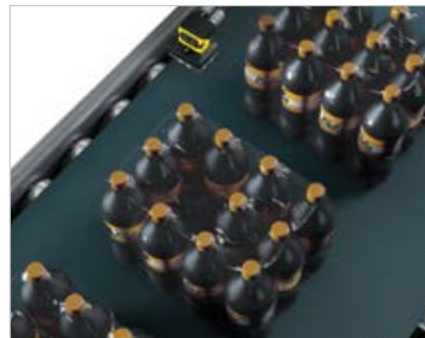
Visit [www.cognex.com/explorer](http://www.cognex.com/explorer)

# 2D VISION APPLICATIONS

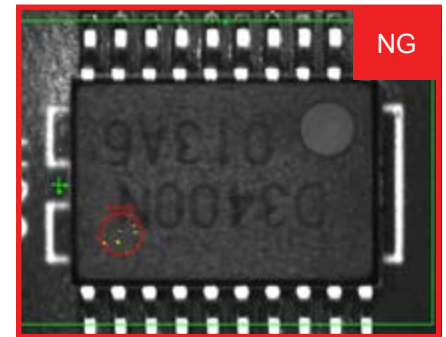
## Automotive



## Food & Beverage








## Electronics



## Pharmaceutical



# 2D VISION SENSORS AND VISION SYSTEMS SPECIFICATIONS

	2000 Series	5705 Series	7000 Series	8000 Series	9000 Series
 Image					
<b>Imager Type</b>	Monochrome/Color Area Scan	Monochrome/Color Area Scan	Monochrome/Color Area Scan	Monochrome/Color Area Scan	Monochrome/Color Area Scan, Monochrome line scan
<b>Resolution</b>	Up to 0.5MP (800 x 600)	5MP (2448 x 2048)	Up to 5MP (2448 x 2048)	Up to 5MP (2592 x 1944)	12MP (4096 x 3000), 32MP (2048 x up to 16,384 lines) for line scan
<b>Acquisition Speed (Max)</b>	75 fps	16 fps	Up to 217 fps	Up to 217 fps	Up to 14 fps, 66K lines per second for line scan
 Options					
<b>Lenses</b>	S-Mount, Autofocus	C-Mount	C-Mount, S-Mount, Autofocus	C-Mount	C-Mount
<b>Lighting</b>	Integrated	N/A	Integrated, External light via light control connector	N/A	External light via light control connector (area scan only)
 Networking					
<b>Speed</b>	Gigabit Ethernet (10/100/1000 Mbps)				
<b>General Protocols</b>	TCP/IP, UDP, FTP, Telnet	TCP/IP, UDP, FTP, SFTP, Telnet, SMTP			
<b>Industrial Protocols</b>	EtherNet/IP with AOP, PROFINET, Modbus TCP, SLMP/SLMP Scanner	EtherNet/IP with AOP, PROFINET, Modbus TCP, SLMP/SLMP Scanner, CC-Link IE Field Basic, IEEE 1588 (CIP Sync)	EtherNet/IP with AOP, PROFINET, Modbus TCP, SLMP/SLMP Scanner, CC-Link IE Field Basic	EtherNet/IP with AOP, PROFINET, Modbus TCP, SLMP/SLMP Scanner, CC-Link IE Field Basic, IEEE 1588 (CIP Sync)	EtherNet/IP with AOP, PROFINET, Modbus TCP, SLMP/SLMP Scanner, CC-Link IE Field Basic, IEEE 1588 (CIP Sync)
 I/O					
<b>Trigger input</b>	1	1	1	1	1
<b>General purpose input</b>	1		2		2
<b>General purpose output</b>	4	2	2	2	2
<b>Bi-Directional</b>			2		2 (area scan only)
<b>Encoder</b>					2 (line scan only)
<b>Expansion I/O</b>	CIO-1400	CIO-1400, CIO-Micro	CIO-1400, CIO-Micro	CIO-Micro	CIO-1400, CIO-Micro
<b>Serial</b>	RS-232C				
 Mechanical					
<b>Length</b>	In-line: 92 mm (3.61 in), Right-angle: 61 mm (2.42 in)	124.1 mm (4.88 in)	90.1 mm (3.54 in)	75.1 mm (2.95 in)	121.0 mm (4.77 in)
<b>Width</b>	60 mm (2.38 in)	61.4 mm (2.42 in)	60.5 mm (2.38 in)	31.2 mm (1.23 in)	60.5 mm (2.38 in)
<b>Depth</b>	52 mm (2.05 in)	52 mm (2.05 in)	Up to 2MP: 35.7 mm (1.41 in), 5MP: 49.4 mm (1.94 in)	31.0 mm (1.22 in)	53.4 mm (2.10 in)
<b>Protection</b>	IP65	IP67	IP67	IP40	IP67

	2000 Series	5705 Series	7000 Series	8000 Series	9000 Series
 Vision Tools					
Pattern Matching	✓	✓ Available PatMax and PatMax RedLine			
Blob		✓	✓	✓	✓
Edge	✓	✓	✓	✓	✓
Measurement	✓	✓	✓	✓	✓
1D/2D Code Reading		✓ IDMax			
OCR		✓	✓	✓	✓
Flaw Detection		✓	✓	✓	✓
Color Verification	✓	✓	✓	✓	✓
Color Identification		✓	✓	✓	✓
Histogram		✓	✓	✓	✓
Brightness	✓	✓	✓	✓	✓
Pixel Counting	✓	✓	✓	✓	✓
Contrast	✓	✓	✓	✓	✓
Image Filters		✓	✓	✓	✓

# 3D VISION SYSTEMS

Whether performing a single profile measurement or scanning an entire surface in 3D, Cognex has the most powerful and robust 3D vision tools. Manufacturers in all industries trust Cognex technology to deliver high accuracy surface feature measurements that go beyond the capabilities of 2D vision technology.

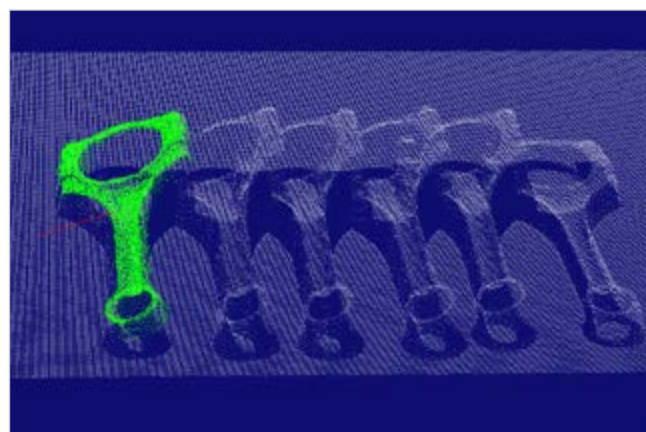
## 3D-A5000 Series

State-of-the-art area scan 3D camera captures high-resolution 3D point cloud images in a fraction of the time of current methods. Using unique 3D imaging technology, it solves challenging assembly verification, in-line metrology, and robotic guidance applications.

### 3D RESOLUTION

 **1.5 million points**

### FEATURES



## DSMax

Fast, high-definition laser displacement sensor for accurate 3D inspections of small, detailed parts. Ideal solution for electronic components which can contain highly reflective or dark features.

3D RESOLUTION

 **2000 points**

FEATURES

    
ESD-Safe IP65



## DS1000/925B Series

Factory-calibrated displacement sensors perform fast, accurate, high-resolution 3D inspections, measurements, and OCR character reading. Equipped with industry-leading 3D vision tool and delivers results in real-world units.

3D RESOLUTION

 **1280 points**

FEATURES

     
Factory Calibrated ESD-Safe IP65

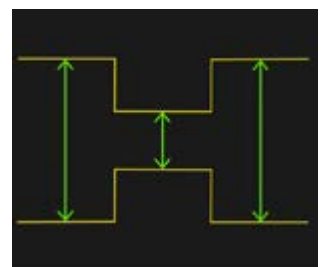


3D RESOLUTION

 **1280 points**

FEATURES

    
Factory Calibrated ESD-Safe IP65

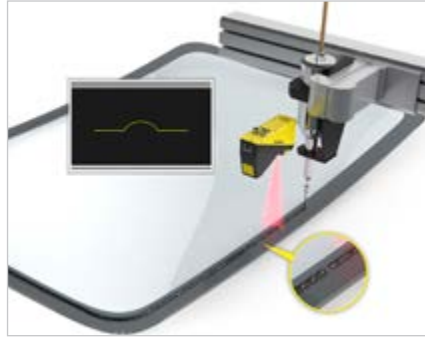


## In-Sight Laser Profiler

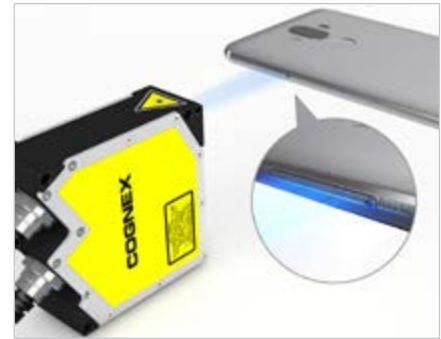
A 3D projection-based measurement sensor used to verify dimensionality for gauging and measurement applications. Set up and deployed in 4 simple steps, it provides accurate and reliable measurements directly on the factory floor.

# 3D VISION APPLICATIONS

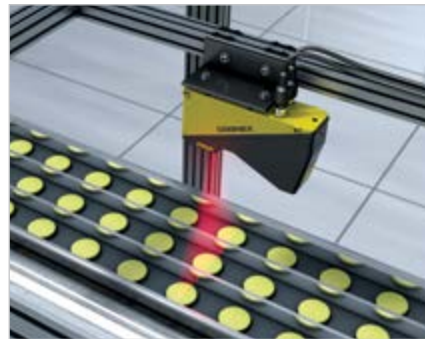
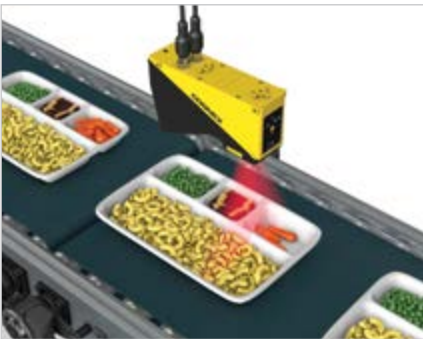
## Automotive



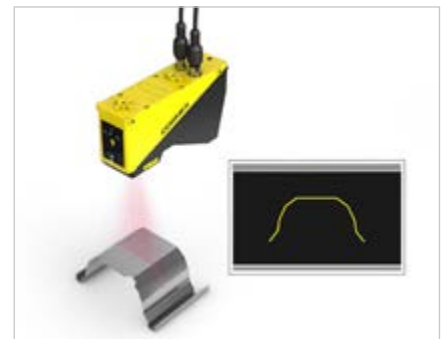
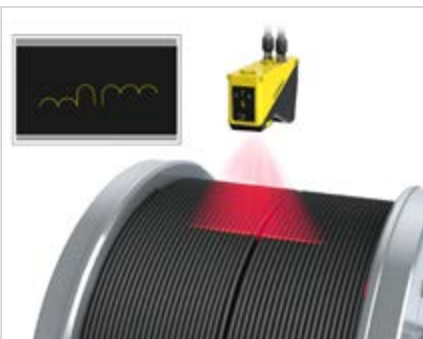
## Electronics



## Food & Beverage



## Consumer Products





# 3D VISION SYSTEMS SPECIFICATIONS

## 3D-A5000 Series

	3D-A5060	3D-A5030	3D-A5005
3D Technology	3D LightBurst Area Scan		
Clearance Distance (CD)	1400.0 mm (55.1 in)	1465.0 mm (57.7 in)	299.3 mm (11.8 in)
Measurement Range (MR)	400.0 mm (15.7 in)	80.0 mm (3.1 in)	12.0 mm (0.5 in)
Near FOV	520 x 390 mm (20.1 x 15.4 in)	280 x 210 mm (11.0 x 8.3 in)	60 x 44 mm (2.4 x 1.7 in)
Far FOV	645 x 490 mm (25.4 x 19.3 in)	285 x 216 mm (11.2 x 8.5 in)	65 x 46 mm (2.6 x 1.8 in)
Resolution XY	361–454 µm	195–200 µm	42–44 µm
Resolution Z	338–690 µm	178–213 µm	7–8 µm
Acquisition Time	200 msec		
Protection	IP65		
Software	VisionPro & Cognex Designer		

## DSMax

	DSMax32T
3D Technology	Laser Displacement Sensor
Clearance Distance (CD)	51.4–62.3 mm (2.0–2.5 in)
Measurement Range (MR)	10.9 mm (0.4 in)
Near FOV	30 mm (1.2 in)
Far FOV	31.5 mm (1.2 in)
Resolution XY	14.6–15.4 µm
Resolution Z	2.5–2.8 µm
Acquisition Rate	Up to 18 KHz
Protection	IP67
Software	VisionPro & Cognex Designer

## DS1000/900 Series 3D and In-Sight Laser Profiler

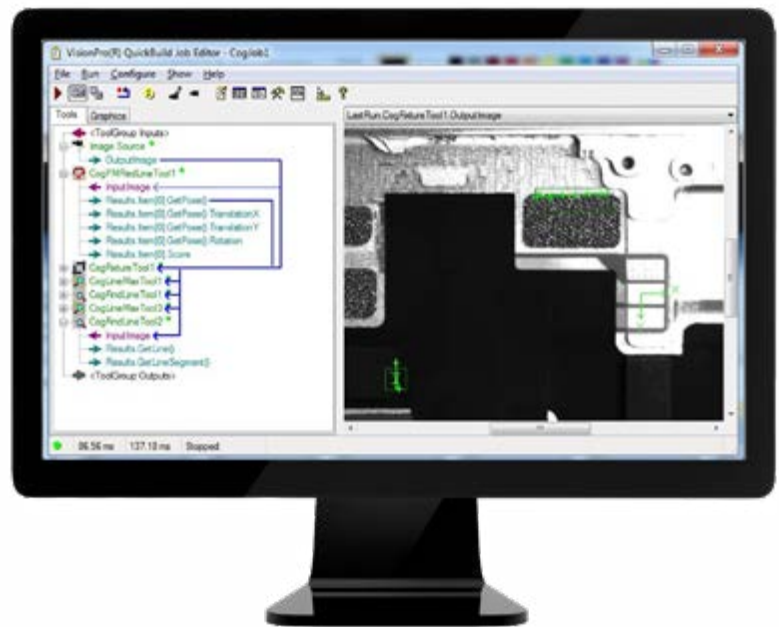
	DS1300	DS1101	DS1050	DS925B	DS910B
3D Technology	Laser Displacement Sensor				
Clearance Distance (CD)	180 mm (7.1 in)	135 mm (5.3 in)	87 mm (3.4 in)	53.5 mm (2.1 in)	52.5 mm (2.1 in)
Measurement Range (MR)	725 mm (28.5 in)	220 mm (8.7 in)	76 mm (3.0 in)	25 mm (1.0 in)	8 mm (0.3 in)
Near FOV	90 mm (3.5 in)	64 mm (2.5 in)	43 mm (1.7 in)	23.4 mm (1.0 in)	9.4 mm (0.4 in)
Far FOV	410 mm (16.1 in)	162 mm (6.4 in)	79 mm (3.1 in)	29.1 mm (1.1 in)	10.7 mm (0.4 in)
Resolution XY	101–457 µm	79–181 µm	59–90 µm	18.3–22.7 µm	7.3–8.4 µm
Resolution Z	16–265 µm	10–52 µm	4–14 µm	2 µm	1 µm
Acquisition Rate	Up to 10 Hz			Up to 1.2 KHz	
Protection	IP65				
Software	In-Sight VC Explorer with EasyBuilder, VisionPro & Cognex Designer				

# VISION SOFTWARE

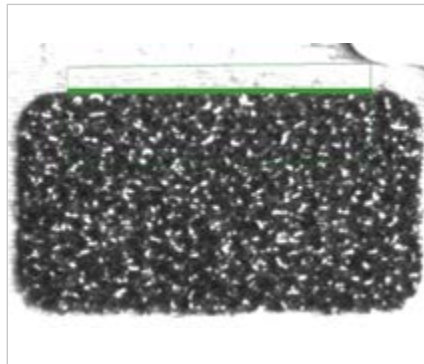
Cognex vision software provides the power and flexibility to solve your most challenging machine vision applications in a PC environment. It enables the highest speed applications with the flexibility to choose the camera needed for your vision application. In addition to the programmatic interfaces provided across the vision software products, VisionPro and Cognex Designer make application development easier than ever through their graphical development environments.

## VisionPro

A powerful development environment to tackle any vision challenge. VisionPro enables the rapid development of sophisticated vision software through its extensive tool prototyping that allow you to visually define and tune your application. VisionPro's seamlessly integrated programming interface enables the deployment of highly-customizable applications on your PC platform.



**PatMax**  
Object location



**LineMax**  
Line finding



**Blob Analysis**  
Geometric analysis

## VisionPro ViDi

A best-in-class, deep learning-based image analysis software library for complex and human-like inspection applications in the same environment as machine vision tools.

This novel approach solves complex applications that are too difficult or time-consuming for traditional machine vision systems. It finds unpredictable defects while tolerating normal part and lighting variations.



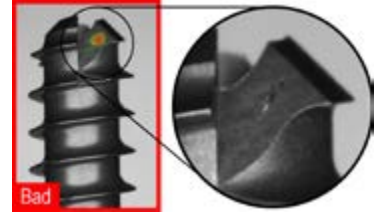
Locate

Finds and counts complex features and objects



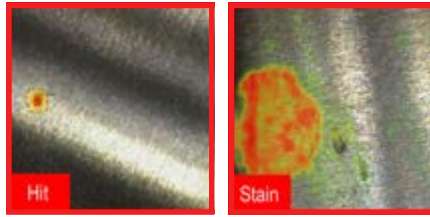
Analyze

Detects anomalies and cosmetic defects



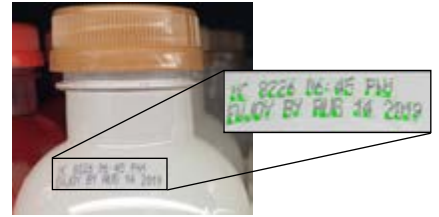
Classify

Classifies and sorts objects and complete scenes



Read

Reads challenging, deformed characters



## Cognex Designer

Cognex Designer combines the power and flexibility of VisionPro with an intuitive graphical interface. Cognex Designer enables developer efficiency by simplifying HMI creation and application integration.



## Cognex Vision Library (CVL)

Comprehensive C++ software vision library to provide the ultimate application development flexibility.

## Vision Accessories

A wide variety of industrial cameras, frame grabbers, and I/O factory communication cards for system flexibility.



# BUILD YOUR VISION

## 2D VISION

Cognex machine vision systems are unmatched in their ability to inspect, identify and guide parts. They are easy to deploy and provide reliable, repeatable performance for the most challenging applications.

[www.cognex.com/machine-vision](http://www.cognex.com/machine-vision)



## 3D VISION

Cognex In-Sight laser profilers and 3D vision systems provide ultimate ease of use, power and flexibility to achieve reliable and accurate measurement results for the most challenging 3D applications.

[www.cognex.com/3D-vision-systems](http://www.cognex.com/3D-vision-systems)



## VISION SOFTWARE

Cognex vision software provides industry leading vision technologies, from traditional machine vision to deep learning-based image analysis, to meet any development needs.

[www.cognex.com/vision-software](http://www.cognex.com/vision-software)



## BARCODE READERS

Cognex industrial barcode readers and mobile terminals with patented algorithms provide the highest read rates for 1D, 2D and DPM codes regardless of the barcode symbology, size, quality, printing method or surface.

[www.cognex.com/BarcodeReaders](http://www.cognex.com/BarcodeReaders)



# COGNEX

Companies around the world rely on Cognex vision and barcode reading to optimize quality, drive down costs and control traceability.

Corporate Headquarters One Vision Drive Natick, MA 01760 USA

### Regional Sales Offices

#### Americas

North America +1 844-999-2469  
Brazil +55 (11) 2626 7301  
Mexico +01 800 733 4116

#### Europe

Austria +49 721 958 8052  
Belgium +32 289 370 75  
France +33 1 7654 9318  
Germany +49 721 958 8052

Hungary +36 800 80291  
Ireland +44 121 29 65 163  
Italy +39 02 3057 8196  
Netherlands +31 207 941 398  
Poland +48 717 121 086  
Spain +34 93 299 28 14  
Sweden +46 21 14 55 88  
Switzerland +41 445 788 877  
Turkey +90 216 900 1696  
United Kingdom +44 121 29 65 163

#### Asia

China +86 21 6208 1133  
India +9120 4014 7840  
Japan +81 3 5977 5400  
Korea +82 2 539 9980  
Malaysia +6019 916 5532  
Singapore +65 632 55 700  
Taiwan +886 3 578 0060  
Thailand +66 88 7978924  
Vietnam +84 2444 583358

[www.cognex.com](http://www.cognex.com)

© Copyright 2018, Cognex Corporation. All information in this document is subject to change without notice. Cognex, In-Sight, EasyBuilder, PatMax, VisionView, VisionPro, IDMax, 1DMax and PatQuick are registered trademarks of Cognex Corporation. Build Your Vision, In-Sight Explorer, PatMax RedLine, Cognex Connect, Cognex Designer, LineMax, OCRMax, QuickBuild, SurfaceFX and 2DMax are trademarks of Cognex Corporation. All other trademarks are the property of their respective owners. Printed in the USA. Lit. No. VG9001-2018-12-EN