

AH3 series

Multi-range Delay-on timer

The AH3 series Multi-range analogue timer is a time-limited type of timer. It has a variety of time setting ranges and voltages you can choose, it is mainly used for equipment control.

Mounting & Socket:

Surface: PF083A(E)

Flush: US-08/P3G-08

Description

- Multi-range analogue timer
- Customized CMOS IC for low power consumption, high operation stability and extreme timing accuracy
- 5 (NA, NB, NC, ND, NE) timing series available
- Each timing series has 4 time ranges, selectable via DIP switch
- 2 modes selectable via slide switch: Mode A (2C) for DPDT time-limiting output contacts and Mode B (1A1C) for SPDT instantaneous and time-limiting output contacts

Product selection

Type	Timing model	Output contact	Time range	Operation voltage
AH3-1	Variable	1C	Second:1/3/6/10/30/60S Minute:3/6/10/30/60M Hour:3/6/10/30H	DC(V): 12,24 AC(V): 12, 24, 110, 220, 240, 380 50/60Hz Allowable 85~110% of rated operating voltage
AH3-2		2C		
AH3-3		1A1C		
AH3-NA	Multi Range Variable	Mode A/B	1S/10S/1M/10M	
AH3-NB			3S/30S/3M/30M	
AH3-NC			6S/60S/6M/60M	
AH3-ND			1M/10M/1H/10H	
AH3-NE			3M/30M/3H/30H	

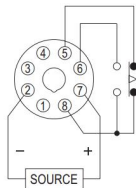
Technical data

Indicator operating	ON-UP Operating
Contact rating	250VAC 5A (resistive load)
Life	Mechanical 5×10 ⁶ times
	Electrical 1×10 ⁵ times

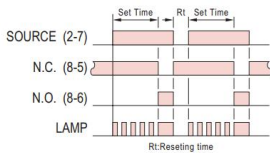
Accuracy	Repeat error	±1.0%max
	Setting error	±10.0%max
	Voltage error	±1.0%max
	Temperature error	±2.0%max
Reset time	Max 0.1sec	
Insulation resistance	100MΩ (DC 500V) min	
Class of protection	1500VAC	
Permitted ambient temperature	-10 ~ +50 °C (non-icing)	
Power consumption	2VA	

Wiring diagram & Timing chart

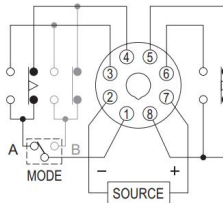
1C



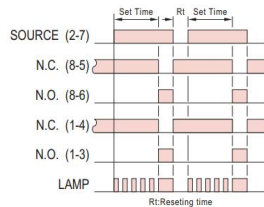
1C



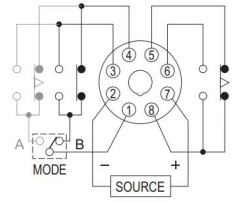
2C, Mode A



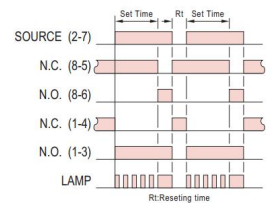
2C, Mode A



1A1C, Mode B



1A1C, Mode B



Dimensions

