

Autonics

ANALOG TIMER (POWER OFF DELAY)

ATS8P SERIES

M A N U A L



Thank you very much for selecting Autonics products.
For your safety, please read the following before using.

Caution for your safety

- ※Please keep these instructions and review them before using this unit.
- ※Please observe the cautions that follow;
- Warning** Serious injury may result if instructions are not followed.
- Caution** Product may be damaged, or injury may result if instructions are not followed.
- ※The following is an explanation of the symbols used in the operation manual.
Caution: Injury or danger may occur under special conditions.

Warning

- In case of using this unit with machineries (Nuclear power control, medical equipment, vehicle, train, airplane, combustion apparatus, entertainment or safety device etc), it is required to install fail-safe device, or contact us.**
 It may cause a fire, human injury or property loss.
- Install the unit on a panel.**
 It may give an electric shock.
- Do not connect, inspect or repair when power is on.**
 It may give an electric shock.
- Do not disassemble the case. Please contact us if it is required.**
 It may cause an electric shock or a fire.

Caution

- This unit shall not be used outdoors.**
 It might shorten the life cycle of the product or give an electric shock.
- Please observe the rated specifications.**
 It might shorten the life cycle of the product and cause a fire.
- Do not use beyond of the rated switching capacity of Relay contact.**
 It may cause insulation failure, contact melt, contact failure, relay broken and fire etc.
- In cleaning unit, do not use water or an oil-based detergent and use dry towels.**
 It may cause an electric shock or a fire.
- Do not use this unit in place where there are flammable or explosive gas, humidity, direct ray of the light, radiant heat, vibration and impact etc.**
 It may cause a fire or an explosion.
- Do not inflow dust or wire dregs into the unit.**
 It may cause a fire or a malfunction.

Ordering information

ATS	8	P	-	2	S	
S	SEC					
M	MIN					
2	24VAC / 24VDC					
5	200~240VAC					
6	100~120VAC					
P	Power OFF Delay operation					
8	8 Pin Socket Type (PG-08, PS-08, PS-M8)					
ATS	Series name : Small Analog Timer					

※8 Pin Socket (PG-08, PS-08, PS-M8) : Sold separately

※The above specifications are subject to change without notice.

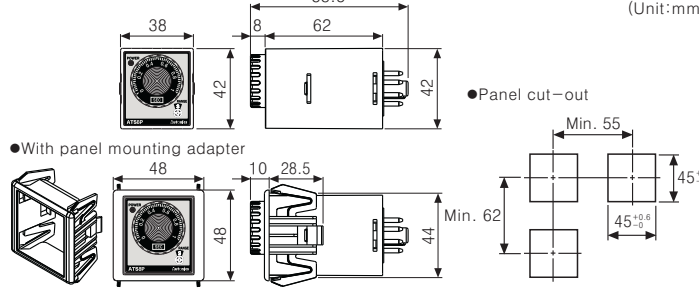
Features

- Control time range (ATS8P-□S : 0.1 ~ 10sec, ATS8P-□M : 0.1 ~ 10min)
- Easy time setting and range check with simple adjustment.
- Power supply : 100~120VAC 50/60Hz, 200~240VAC 50/60Hz, 24VAC 50/60Hz, 24VDC (Universal)
- Application : Applicable to circuit retention or restart in case of momentary power failure.

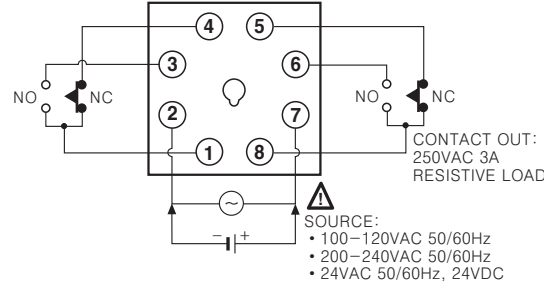
Specifications

Model		ATS8P-□S	ATS8P-□M
Function			
Power OFF Delay operation			
Control time setting range		0.1sec ~ 10sec	0.1min ~ 10min
Power supply		<ul style="list-style-type: none"> • 100~120VAC 50/60Hz • 24VAC 50/60Hz, 24VDC (Universal) 	<ul style="list-style-type: none"> • 200~240VAC 50/60Hz
Allowable voltage range		90 ~ 110% of rated voltage	
Power consumption		<ul style="list-style-type: none"> • 100~120VAC : 1.5VA • 24VAC : 0.2VA, 24VDC : 0.2W 	<ul style="list-style-type: none"> • 200~240VAC : 1.5VA
Control output	Contact	Time limit DPDT (2c)	
	Capacity	250VAC 3A resistive load	
Relay life cycle	Mechanical	Min. 10,000,000 times	
	Electrical	Min. 100,000 times (250VAC 3A resistive load)	
Repeat error		Max. ±0.2% ±10ms	
Setting error		Max. ±5% ±50ms	
Voltage error		Max. ±0.5%	
Temperature error		Max. ±2%	
Insulation resistance		100MΩ (at 500VDC)	
Dielectric strength		2000VAC 50/60Hz for 1 minute	
Noise strength		Square-wave noise by noise simulator, apply ±2kV in power input terminals	
Vibration	Destruction	0.75mm amplitude at frequency of 10 to 55Hz in each of X, Y, Z directions for 1 hours	
	Malfunction	0.5mm amplitude at frequency of 10 to 55Hz in each of X, Y, Z directions for 10 minutes	
Shock	Destruction	300m/s ² (Approx. 30G) 3 times at X, Y, Z direction	
	Malfunction	100m/s ² (Approx. 10G) 3 times at X, Y, Z direction	
Ambient temperature		-10 ~ 55°C (at non-freezing status)	
Storage temperature		-25 ~ 65°C (at non-freezing status)	
Ambient humidity		35 ~ 85%RH	
Approval			
Unit weight		Approx. 80g	Approx. 85g

Dimensions

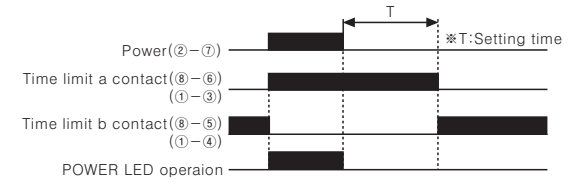


Connections



Operation and time specification

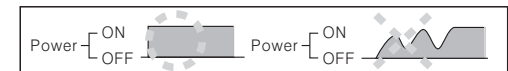
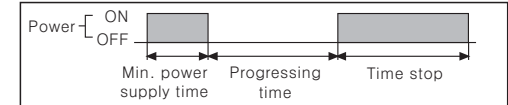
※ "a" contact becomes on as soon as power is supplied, then becomes off when the setting time [T] is up after the power is turned off. Even though change the setting time after the power is off, time-limit "a" contacts will be off after the setting time which was set before the power off because of the setting time memory retention function.



Range	Model	
	ATS8P-□S	ATS8P-□M
Setting time range (T)	1	0.1sec ~ 1sec
	10	1min ~ 10min
Min. power supply time	0.1sec	2sec

Caution for using

- Power
 - ①This product is power OFF delay timer, the min. power supplying time is 0.1sec. for ATS8P-□S and 2 sec. for ATS8P-□M. Therefore be sure that this product will operate after power off.
 - ②Please observe the allowable voltage range and apply or cut the power at once to prevent from chattering.



- In case of 24VAC/24VDC model, isolated and limited voltage/current or Class 2 sources should be provided for power supply.
- When supplying the power to the timer with 100~120VAC or 200~240VAC, approx. 0.5A will flow for 0.5 sec. (ATS8P-□M), or for 0.05 sec. (ATS8P-□S). When supplying the power to the timer with 24V C, approx. 1.5A will flow for 0.5 sec. (ATS8P-□M), or for 0.05 sec. (ATS8P-□S). Therefore be sure about the rating of contact and the power capacity.
- When performing dielectric voltage test or insulation resistance test while the unit is installed on control panel,
 - ①Please isolate this unit from the circuit of control panel.
 - ②Please make all terminals of this unit short-circuited.
- Do not use this unit at below places.
 - ①Place where there are severe vibration or impact.
 - ②Place where strong alkalis or acids are used.
 - ③Place where there are direct ray of the sun
 - ④Place where strong magnetic field or electric noise are generated.
- Installation environment
 - ①It shall be used indoor
 - ②Altitude Max. 2000m
 - ③Pollution Degree 2
 - ④Installation Category II

※It may cause malfunction if above instructions are not followed.

Major products

- Proximity sensors
- Area sensors
- Door/Door side sensors
- Counters
- Rotary encoders
- Power controllers
- Panel meters
- Graphic/Logic panels
- Temperature controllers
- Tachometer/Pulse(Rate) meters
- Temperature/Humidity transducers
- Switching power supplies
- Stepping motors/drivers/motion controllers
- Field network devices
- Laser marking system (CO₂, Nd:YAG)
- Laser welding/soldering system
- Photoelectric sensors
- Fiber optic sensors
- Pressure sensors
- Timers
- Display units
- Sensor controllers

Autonics Corporation
<http://www.autonics.com>

Satisfiable Partner For Factory Automation

■HEAD QUARTERS:
 41-5, Yongdang-dong, Yangsan-si, Gyeongsang, 626-847, Korea

■OVERSEAS SALES:
 Bldg. 402 3rd Fl., Bucheon Techno Park, 193, Yakdae-dong, Wonmi-gu, Bucheon-si, Gyeonggi-do, 420-734, Korea
 TEL: 82-32-610-2730 / FAX: 82-32-329-0728
 E-mail : sales@autonics.com

The proposal of a product improvement and development : product@autonics.com

EP-KE-02-051B