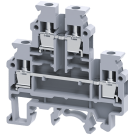


CDL4UN



4 sq.mm Double Level Terminal Blocks.

These blocks are ideal for use in applications requiring high density wiring . Interconnection / shorting is possible at both levels. CDL4UN is the newer version of the CDL4U Terminal Block. It is suited for 800 V application and can accommodate larger K6 marking tags.

TECHNICAL DATA

| | |
|------------------------|------------------------------|
| Rated Voltage | 800 V |
| Rated Current | 32 A |
| Tightening Torque | 0.5 Nm |
| Housing Material | Polymide |
| Product Function | Double Level |
| Wire Entry Orientation | Side Entry |
| Mounting Possibility | DIN 32/DIN 35/DIN 35-15 Rail |
| Screw Size | M3 |
| Operated by | Screwdriver |
| Rated Surge Voltage | 8 KV |
| Pollution Degree | 3 |

CONNECTION DATA

| | |
|---|---------------------|
| Conductor Cross Section Stranded min. | 0.2 mm ² |
| Conductor Cross Section Stranded max. | 4 mm ² |
| Conductor Cross Section AWG/Kcmil min | 22 AWG |
| Conductor Cross Section AWG/Kcmil max | 10 AWG |
| Conductor Cross Section Stranded with Ferrule/Lug min | 0.2 mm ² |
| Conductor Cross Section Stranded with Ferrule/Lug max | 4 mm ² |
| 2 Conductors with same Cross Section Stranded min | 0.2 mm ² |
| 2 Conductor with same Cross Section Stranded max | 2.5 mm ² |
| Conductor Cross Section Solid min | 0.2 mm ² |
| Conductor Cross Section Solid max | 6 mm ² |
| 2 Conductors with same Cross Section Stranded with TWIN Ferrule/Lug min | 0.2 mm ² |
| 2 Conductor with same Cross Section Stranded with TWIN Ferrule/Lug max | 2.5 mm ² |
| Stripping Length | 9 mm |
| Internal Cylindrical Guage | A4 |

DIMENSIONS

| | |
|----------------------------------|---------|
| Height with DIN 32 rail | 64.5 mm |
| Height with DIN 35 x 15 mm rail | 67.2 mm |
| Height with DIN 35 x 7.5 mm rail | 59.5 mm |
| Length | 57 mm |
| Width (Thickness) | 6 mm |

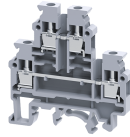
ORDERING INFORMATION

| CAT. NO. | DESCRIPTION | STD. PACK |
|----------|--|-----------|
| CDL4UN | 4 sq.mm Double level Terminal Block in Grey colour | 100 |
| CDL4UNBU | 4 sq.mm Double level Terminal Block in Blue colour | 100 |

ACCESSORIES

| IMAGES | CAT. NO. | DESCRIPTION | STD. PACK |
|--------|---------------|--|-----------|
| | CA501-1M | Din 32 Rail unslotted 1 meter | 50 |
| | CA501-1M-S | Din 32 Rail slotted 1 meter | 50 |
| | CA501-2M | Din 32 Rail unslotted 2 meter | 50 |
| | CA501-2M-S | Din 32 Rail slotted 2 meter | 50 |
| | CA701-1M | Din 35 Rail unslotted 1 meter | 50 |
| | CA701-2M | Din 35 Rail unslotted 2 meter | 50 |
| | CA701-2M-S | Din 35 Rail slotted 2 meter | 50 |
| | CA701-1M-S | Din 35 Rail slotted 1 meter | 50 |
| | CA701-15-1M | Din 35 Rail 15 deep unslotted 1 meter | 50 |
| | CA701-15-1M-S | Din 35 Rail 15 deep slotted 1 meter | 50 |
| | CA701-15-2M | Din 35 Rail 15 deep unslotted 2 meter | 50 |
| | CA701-15-2M-S | Din 35 Rail 15 deep slotted 2 meter | 50 |
| | CA202 | End Clamp in Polyamide suitable for Din 35 / Din 35-15 Rails | 25 |
| | CA702 | End Clamp in Polyamide 66 suitable for Din 32 / Din 35 / Din 35-15 Rails | 50 |
| | CA802 | End Clamp in Polyamide suitable for Din 35 / Din 35-15 Rails | 50 |
| | EPCDL4UN | End Plate in Grey colour | 50 |
| | SPCDL4U | Separator Plate in Grey Colour | 100 |

CDL4UN



connectwell
THE RIGHT CONNECTION

ACCESSORIES

NOTES

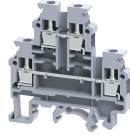
The Rated current is with the use of copper (Cu) conductor/Wire

| IMAGES | CAT. NO. | DESCRIPTION | STD. PACK |
|--------|--------------|--|-----------|
| | CA722/2 | Pre Assembled Shorting Link assemblies with 2 poles | 100 |
| | CA722/3 | Pre Assembled Shorting Links assemblies with 3 poles | 100 |
| | CA722/4 | Pre Assembled Shorting Links assemblies with 4 poles | 100 |
| | CA722/5 | Pre Assembled Shorting Links assemblies with 5 poles | 100 |
| | CA722/10 | Pre Assembled Shorting Links assemblies with 10 poles | 10 |
| | CA722/100 | Pre Assembled Shorting Links assemblies with 100 poles | 10 |
| | CA742/2 | Insulated Pre assembled Shorting Link for 2 way shorting | 100 |
| | CA742/3 | Insulated Pre assembled Shorting Link for 3 way shorting | 100 |
| | CA742/4 | Insulated Pre assembled Shorting Link for 4 way shorting | 100 |
| | CA742/10 | Insulated Pre assembled Shorting Link for 10 way shorting | 10 |
| | CA742/100 | Insulated Pre assembled Shorting Link for 100 way shorting | 10 |
| | CA714/2 | External Comb Type Shorting Link Available in 2 pole | 100 |
| | CA714/3 | External Comb Type Shorting Link Available in 3 pole | 100 |
| | CA714/4 | External Comb Type Shorting Link Available in 4 pole | 100 |
| | CA714/10 | External Comb Type Shorting Link Available in 10 pole | 20 |
| | CA703/1 | Permanent Shorting Link for 2 way shorting | 100 |
| | CA704/1 | Permanent Shorting Link for 3 way shorting | 100 |
| | CA705/1 | Permanent Shorting Link for 4 way shorting | 100 |
| | CA732/10 | Permanent Shorting Link for 10 way shorting | 100 |
| | CA732/10-A | Permanent Shorting Link (Breakable) for 10 way shorting | 100 |
| | CA732/100 | Permanent Shorting Link for 100 way shorting | 100 |
| | CA707/S/Q/01 | Shorting Sleeve and Screw | 100 |
| | CA509/K6 | Blank Marking Tag | 100 |
| | SCS0.6/3.5 | Electricians Screwdriver for slotted screws | 10 |
| | MC6 | MARKER CARD 6MM PITCH WITH 72 TAGS | 10 |

APPROVALS



CDL4UN



connectwell
THE RIGHT CONNECTION

RATINGS AS PER STANDARDS

| STANDARDS | UL 1059 | IEC/EN60947-7-1 | CSA C.22.2 No:158 |
|---------------------------------------|----------------|------------------------|--------------------------|
| Approvals | UL | CE | CSA |
| Conductor Cross Section Stranded min. | 22 AWG | 0.2 mm ² | 22 AWG |
| Conductor Cross Section Stranded max. | 10 AWG | 4 mm ² | 10 AWG |
| Rated Voltage | 600 V | 800 V | 600 V |
| Rated Current | 35 A | 32 A | 35 A |
| Tightening Torque | 7 lb-in | 0.5 Nm | 7 lb-in |

| STANDARDS | EN60079-7 | EN60079-7 | |
|---------------------------------------|---------------------|---------------------|--|
| Approvals | ATEX | ATEX-IECex | |
| Conductor Cross Section Stranded min. | 0.5 mm ² | 0.5 mm ² | |
| Conductor Cross Section Stranded max. | 4 mm ² | 4 mm ² | |
| Rated Voltage | 550 V | 550 V | |
| Rated Current | 28 A | 28 A | |
| Tightening Torque | 0.5 Nm | 0.5 Nm | |
| Operating Temperature Range | -40 to +85 °C | | |