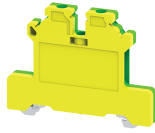


CGT4N


**connectwell**  
 THE RIGHT CONNECTION

#### 4 sq.mm Ground / Earth Terminal Blocks

These Terminal Blocks are used for Grounding / Earthing Wires. They are Green-Yellow colour coded as per industries standard. They have the same top profile as their respective feed through Terminal Blocks.

#### TECHNICAL DATA

Tightening Torque	0.4 Nm
Housing Material	Polymide
Product Function	Earthing/Grounding
Wire Entry Orientation	Side Entry
Mounting Possibility	DIN 35/DIN 35-15 Rail
Screw Size	M3
Operated by	Screwdriver
Rated Surge Voltage	8 KV
Pollution Degree	3

#### CONNECTION DATA

Conductor Cross Section Stranded min.	0.2 mm <sup>2</sup>
Conductor Cross Section Stranded max.	4 mm <sup>2</sup>
Conductor Cross Section AWG/Kcmil min	22 AWG
Conductor Cross Section AWG/Kcmil max	10 AWG
Conductor Cross Section Stranded with Ferrule/Lug min	0.2 mm <sup>2</sup>
Conductor Cross Section Stranded with Ferrule/Lug max	4 mm <sup>2</sup>
2 Conductors with same Cross Section Stranded min	0.2 mm <sup>2</sup>
2 Conductor with same Cross Section Stranded max	2.5 mm <sup>2</sup>
Conductor Cross Section Solid min	0.2 mm <sup>2</sup>
Conductor Cross Section Solid max	6 mm <sup>2</sup>
2 Conductors with same Cross Section Stranded with TWIN Ferrule/Lug min	0.2 mm <sup>2</sup>
2 Conductor with same Cross Section Stranded with TWIN Ferrule/Lug max	2.5 mm <sup>2</sup>
Stripping Length	8 mm
Internal Cylindrical Guage	A4

#### DIMENSIONS

Height with DIN 35 x 15 mm rail	54.4 mm
Height with DIN 35 x 7.5 mm rail	47 mm
Length	54.2 mm
Width (Thickness)	6 mm

#### ORDERING INFORMATION

CAT. NO.	DESCRIPTION	STD. PACK
CGT4N	4 sq.mm Grounding / Earthing Terminal Block.	50

#### ACCESSORIES

IMAGES	CAT. NO.	DESCRIPTION	STD. PACK
	CA701-1M	Din 35 Rail unslotted 1 meter	50
	CA701-2M	Din 35 Rail unslotted 2 meter	50
	CA701-2M-S	Din 35 Rail slotted 2 meter	50
	CA701-1M-S	Din 35 Rail slotted 1 meter	50
	CA701-15-1M	Din 35 Rail 15 deep unslotted 1 meter	50
	CA701-15-1M-S	Din 35 Rail 15 deep slotted 1 meter	50
	CA701-15-2M	Din 35 Rail 15 deep unslotted 2 meter	50
	CA701-15-2M-S	Din 35 Rail 15 deep slotted 2 meter	50
	CA509/K6	Blank Marking Tag	100
	SCS0.6/3.5	Electricians Screwdriver for slotted screws	10
	MC6	MARKER CARD 6MM PITCH WITH 72 TAGS	10

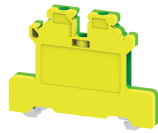
#### APPROVALS



#### NOTES

The Rated current is with the use of copper (Cu) conductor/Wire

CGT4N

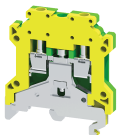


**connectwell**  
THE RIGHT CONNECTION

**RATINGS AS PER STANDARDS**

<b>STANDARDS</b>	<b>UL 1059</b>	<b>CSA C.22.2 No:158</b>	<b>DIN EN60947-7-2</b>
Approvals	UL	CSA	VDE
Conductor Cross Section Stranded min.	22 AWG	22 AWG	0.5 mm <sup>2</sup>
Conductor Cross Section Stranded max.	10 AWG	10 AWG	4 mm <sup>2</sup>
Tightening Torque	7 lb-in	7 lb-in	0.4 Nm
<b>STANDARDS</b>	<b>IEC/EN60947-7-2</b>	<b>EN60079-7</b>	<b>EN60079-7</b>
Approvals	CE	ATEX	ATEX-IECex
Conductor Cross Section Stranded min.	0.2 mm <sup>2</sup>	0.5 mm <sup>2</sup>	0.5 mm <sup>2</sup>
Conductor Cross Section Stranded max.	4 mm <sup>2</sup>	4 mm <sup>2</sup>	4 mm <sup>2</sup>
Tightening Torque	0.4 Nm	0.4 Nm	0.4 Nm

# CGT4U



**connectwell**  
THE RIGHT CONNECTION

## 4 sq.mm Ground / Earth Terminal Blocks for multi-rail mounting

These Terminal Blocks are used for Grounding / Earthing Wires. They are Green-Yellow colour coded as per industries standard. They have the same top profile as their respective feed through Terminal Blocks. CGT4U can be mounted on the DIN 35 and DIN 32 rails.

### TECHNICAL DATA

Tightening Torque	0.4 Nm
Housing Material	Polymide
Product Function	Earthing/Grounding
Wire Entry Orientation	Side Entry
Mounting Possibility	DIN 32/DIN 35/DIN 35-15 Rail
Screw Size	M3
Operated by	Screwdriver
Rated Surge Voltage	8 KV
Pollution Degree	3

### CONNECTION DATA

Conductor Cross Section Stranded min.	0.2 mm <sup>2</sup>
Conductor Cross Section Stranded max.	4 mm <sup>2</sup>
Conductor Cross Section AWG/Kcmil min	22 AWG
Conductor Cross Section AWG/Kcmil max	10 AWG
Conductor Cross Section Stranded with Ferrule/Lug min	0.2 mm <sup>2</sup>
Conductor Cross Section Stranded with Ferrule/Lug max	4 mm <sup>2</sup>
2 Conductors with same Cross Section Stranded min	0.2 mm <sup>2</sup>
2 Conductor with same Cross Section Stranded max	2.5 mm <sup>2</sup>
Conductor Cross Section Solid min	0.2 mm <sup>2</sup>
Conductor Cross Section Solid max	6 mm <sup>2</sup>
2 Conductors with same Cross Section Stranded with TWIN Ferrule/Lug min	0.2 mm <sup>2</sup>
2 Conductor with same Cross Section Stranded with TWIN Ferrule/Lug max	2.5 mm <sup>2</sup>
Stripping Length	8 mm
Internal Cylindrical Guage	A4

### DIMENSIONS

Height with DIN 32 rail	54.3 mm
Height with DIN 35 x 15 mm rail	56.7 mm
Height with DIN 35 x 7.5 mm rail	49.5 mm
Length	43 mm
Width (Thickness)	6 mm

### ORDERING INFORMATION

CAT. NO.	DESCRIPTION	STD. PACK
CGT4U	4 sq.mm Grounding / Earthing Terminal Block.	50

### ACCESSORIES

IMAGES	CAT. NO.	DESCRIPTION	STD. PACK
	CA501-1M	Din 32 Rail unslotted 1 meter	50
	CA501-1M-S	Din 32 Rail slotted 1 meter	50
	CA501-2M	Din 32 Rail unslotted 2 meter	50
	CA501-2M-S	Din 32 Rail slotted 2 meter	50
	CA701-1M	Din 35 Rail unslotted 1 meter	50
	CA701-2M	Din 35 Rail unslotted 2 meter	50
	CA701-2M-S	Din 35 Rail slotted 2 meter	50
	CA701-1M-S	Din 35 Rail slotted 1 meter	50
	CA701-15-1M	Din 35 Rail 15 deep unslotted 1 meter	50
	CA701-15-1M-S	Din 35 Rail 15 deep slotted 1 meter	50
	CA701-15-2M	Din 35 Rail 15 deep unslotted 2 meter	50
	CA701-15-2M-S	Din 35 Rail 15 deep slotted 2 meter	50
	EPCGT4U	End Plate in Yellow colour	50
	CA509/K6	Blank Marking Tag	100
	SCS0.6/3.5	Electricians Screwdriver for slotted screws	10
	MC6	MARKER CARD 6MM PITCH WITH 72 TAGS	10

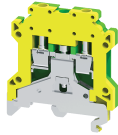
### APPROVALS



### NOTES

The Rated current is with the use of copper (Cu) conductor/Wire

CGT4U

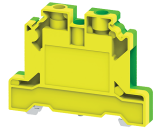


**connectwell**  
THE RIGHT CONNECTION

**RATINGS AS PER STANDARDS**

<b>STANDARDS</b>	<b>UL 1059</b>	<b>CSA C.22.2 No:158</b>	<b>DIN EN60947-7-2</b>
Approvals	UL	CSA	VDE
Conductor Cross Section Stranded min.	22 AWG	22 AWG	0.5 mm <sup>2</sup>
Conductor Cross Section Stranded max.	10 AWG	10 AWG	4 mm <sup>2</sup>
Tightening Torque	4.5 lb-in	4.5 lb-in	0.4 Nm
<b>STANDARDS</b>	<b>IEC/EN60947-7-2</b>	<b>EN60079-7</b>	<b>IEC 60079-0 &amp; IEC 60079-7</b>
Approvals	CE	ATEX	AEx
Conductor Cross Section Stranded min.	0.2 mm <sup>2</sup>	0.5 mm <sup>2</sup>	22 AWG
Conductor Cross Section Stranded max.	4 mm <sup>2</sup>	4 mm <sup>2</sup>	10 AWG
Tightening Torque	0.4 Nm	0.4 Nm	4.5 lb-in
<b>STANDARDS</b>	<b>EN60079-7</b>		
Approvals	ATEX-IECex		
Conductor Cross Section Stranded min.	0.5 mm <sup>2</sup>		
Conductor Cross Section Stranded max.	4 mm <sup>2</sup>		
Tightening Torque	0.4 Nm		

# CGT6N



## 6 sq.mm Ground / Earth Terminal Blocks

These Terminal Blocks are used for Grounding / Earthing Wires. They are Green-Yellow colour coded as per industries standard. They have the same top profile as their respective feed through Terminal Blocks.

### TECHNICAL DATA

Tightening Torque	0.8 Nm
Tightening Torque - Input Side	0.8 Nm
Tightening Torque - Output Side	0.8 Nm
Housing Material	Polymide
Standard Colour	Yellow - Green
Product Function	Earthing/Grounding
Wire Entry Orientation	Side Entry
Mounting Possibility	DIN 35/DIN 35-15 Rail
Screw Size	M3.5
Operated by	Screwdriver
Rated Surge Voltage	8 KV
Pollution Degree	3

### CONNECTION DATA

Conductor Cross Section Stranded min.	0.2 mm <sup>2</sup>
Conductor Cross Section Stranded max.	6 mm <sup>2</sup>
Conductor Cross Section AWG/Kcmil min	22 AWG
Conductor Cross Section AWG/Kcmil max	8 AWG
Conductor Cross Section Stranded with Ferrule/Lug min	0.2 mm <sup>2</sup>
Conductor Cross Section Stranded with Ferrule/Lug max	6 mm <sup>2</sup>
2 Conductors with same Cross Section Stranded min	0.2 mm <sup>2</sup>
2 Conductor with same Cross Section Stranded max	4 mm <sup>2</sup>
2 Conductors with same Cross Section Stranded with TWIN Ferrule/Lug min	0.2 mm <sup>2</sup>
2 Conductor with same Cross Section Stranded with TWIN Ferrule/Lug max	4 mm <sup>2</sup>
Stripping Length	9 mm
Internal Cylindrical Guage	A5

### DIMENSIONS

Height with DIN 35 x 15 mm rail	55.8 mm
Height with DIN 35 x 7.5 mm rail	48.2 mm
Length	54.5 mm
Width (Thickness)	8 mm

### ORDERING INFORMATION

CAT. NO.	DESCRIPTION	STD. PACK
CGT6N	6 sq.mm Ground/Earth terminal block in Green-Yellow colour.	50

### ACCESSORIES

IMAGES	CAT. NO.	DESCRIPTION	STD. PACK
	CA701-1M	Din 35 Rail unslotted 1 meter	50
	CA701-2M	Din 35 Rail unslotted 2 meter	50
	CA701-2M-S	Din 35 Rail slotted 2 meter	50
	CA701-1M-S	Din 35 Rail slotted 1 meter	50
	CA701-15-1M	Din 35 Rail 15 deep unslotted 1 meter	50
	CA701-15-1M-S	Din 35 Rail 15 deep slotted 1 meter	50
	CA701-15-2M	Din 35 Rail 15 deep unslotted 2 meter	50
	CA701-15-2M-S	Din 35 Rail 15 deep slotted 2 meter	50
	CA509/K8	Marking Tag with Vertical printing.	100
	SCS0.8/4	Electricians Screwdriver for slotted screws	10
	MC8	MARKER CARD 8MM PITCH WITH 48 TAGS	10

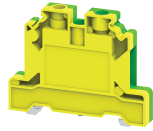
### APPROVALS



### NOTES

The Rated current is with the use of copper (Cu) conductor/Wire

CGT6N

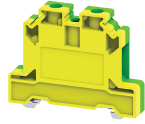


**connectwell**  
THE RIGHT CONNECTION

**RATINGS AS PER STANDARDS**

<b>STANDARDS</b>	<b>UL 1059</b>	<b>CSA C.22.2 No:158</b>	<b>DIN EN60947-7-2</b>
Approvals	UL	CSA	VDE
Conductor Cross Section Stranded min.	22 AWG	22 AWG	1.5 mm <sup>2</sup>
Conductor Cross Section Stranded max.	8 AWG	8 AWG	6 mm <sup>2</sup>
Tightening Torque	14 lb-in	14 lb-in	0.8 Nm
<b>STANDARDS</b>	<b>IEC/EN60947-7-2</b>	<b>EN60079-7</b>	<b>EN60079-7</b>
Approvals	CE	ATEX	ATEX-IECex
Conductor Cross Section Stranded min.	0.2 mm <sup>2</sup>	0.5 mm <sup>2</sup>	0.5 mm <sup>2</sup>
Conductor Cross Section Stranded max.	6 mm <sup>2</sup>	6 mm <sup>2</sup>	6 mm <sup>2</sup>
Tightening Torque	0.8 Nm	0.8 Nm	0.8 Nm
Operating Temperature Range		-40 to +85 °C	

# CGT10N



**connectwell**  
THE RIGHT CONNECTION

## 10 sq.mm Ground / Earth Terminal Blocks

These Terminal Blocks are used for Grounding / Earthing Wires. They are Green-Yellow colour coded as per industries standard. They have the same top profile as their respective feed through Terminal Blocks.

### TECHNICAL DATA

Tightening Torque	1.2 Nm
Housing Material	Polymide
Product Function	Earthing/Grounding
Wire Entry Orientation	Side Entry
Mounting Possibility	DIN 35/DIN 35-15 Rail
Screw Size	M4
Operated by	Screwdriver
Rated Surge Voltage	8 KV
Pollution Degree	3

### CONNECTION DATA

Conductor Cross Section Stranded min.	0.2 mm <sup>2</sup>
Conductor Cross Section Stranded max.	10 mm <sup>2</sup>
Conductor Cross Section AWG/Kcmil min	16 AWG
Conductor Cross Section AWG/Kcmil max	6 AWG
Conductor Cross Section Stranded with Ferrule/Lug min	0.2 mm <sup>2</sup>
Conductor Cross Section Stranded with Ferrule/Lug max	10 mm <sup>2</sup>
2 Conductors with same Cross Section Stranded min	0.2 mm <sup>2</sup>
2 Conductor with same Cross Section Stranded max	6 mm <sup>2</sup>
2 Conductors with same Cross Section Stranded with TWIN Ferrule/Lug min	0.2 mm <sup>2</sup>
2 Conductor with same Cross Section Stranded with TWIN Ferrule/Lug max	6 mm <sup>2</sup>
Stripping Length	11 mm
Internal Cylindrical Guage	A6

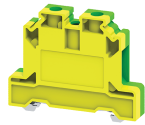
### DIMENSIONS

Height with DIN 35 x 15 mm rail	56 mm
Height with DIN 35 x 7.5 mm rail	48.5 mm
Length	55 mm
Width (Thickness)	10 mm

### ORDERING INFORMATION

CAT. NO.	DESCRIPTION	STD. PACK
CGT10N	10 sq.mm Grounding / Earthing Terminal Block.	50

CGT10N



**connectwell**  
THE RIGHT CONNECTION

**APPROVALS**



**NOTES**

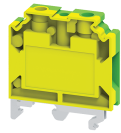
The Rated current is with the use of copper (Cu) conductor/Wire

**RATINGS AS PER STANDARDS**

STANDARDS	UL 1059	EN60079-7	CSA C.22.2 No:158
Approvals	UL	ATEX-IECex	CSA
Conductor Cross Section Stranded min.	16 AWG	1.5 mm <sup>2</sup>	16 AWG
Conductor Cross Section Stranded max.	6 AWG	10 mm <sup>2</sup>	6 AWG
Tightening Torque	14 lb-in	1.2 Nm	14 lb-in
STANDARDS	EN60079-7	IEC/EN60947-7-2	
Approvals	ATEX	CE	
Conductor Cross Section Stranded min.	1.5 mm <sup>2</sup>	0.2 mm <sup>2</sup>	
Conductor Cross Section Stranded max.	10 mm <sup>2</sup>	10 mm <sup>2</sup>	
Tightening Torque	1.2 Nm	1.2 Nm	
Operating Temperature Range	-40 to +85 °C		



# CGT10U



## 10 sq.mm Ground / Earth Terminal Blocks for multi-rail mounting

These Terminal Blocks are used for Grounding / Earthing Wires. They are Green-Yellow colour coded as per industries standard. They have the same top profile as their respective feed through Terminal Blocks.

### TECHNICAL DATA

Tightening Torque	1.2 Nm
Housing Material	Polymide
Product Function	Earthing/Grounding
Wire Entry Orientation	Side Entry
Mounting Possibility	DIN 32/DIN 35/DIN 35-15 Rail
Screw Size	M4
Operated by	Screwdriver
Rated Surge Voltage	8 KV
Pollution Degree	3

### CONNECTION DATA

Conductor Cross Section Stranded min.	0.2 mm <sup>2</sup>
Conductor Cross Section Stranded max.	10 mm <sup>2</sup>
Conductor Cross Section AWG/Kcmil min	16 AWG
Conductor Cross Section AWG/Kcmil max	8 AWG
Conductor Cross Section Stranded with Ferrule/Lug min	0.2 mm <sup>2</sup>
Conductor Cross Section Stranded with Ferrule/Lug max	10 mm <sup>2</sup>
2 Conductors with same Cross Section Stranded min	0.2 mm <sup>2</sup>
2 Conductor with same Cross Section Stranded max	6 mm <sup>2</sup>
2 Conductors with same Cross Section Stranded with TWIN Ferrule/Lug min	0.2 mm <sup>2</sup>
2 Conductor with same Cross Section Stranded with TWIN Ferrule/Lug max	6 mm <sup>2</sup>
Stripping Length	11 cm
Internal Cylindrical Guage	A6

### DIMENSIONS

Height with DIN 32 rail	55.7 mm
Height with DIN 35 x 15 mm rail	58.2 mm
Height with DIN 35 x 7.5 mm rail	51 mm
Length	45 mm
Width (Thickness)	10 mm

### ORDERING INFORMATION

CAT. NO.	DESCRIPTION	STD. PACK
CGT10U	10 sq.mm Grounding / Earthing Terminal Block.	50

### ACCESSORIES

IMAGES	CAT. NO.	DESCRIPTION	STD. PACK
	CA501-1M	Din 32 Rail unslotted 1 meter	50
	CA501-1M-S	Din 32 Rail slotted 1 meter	50
	CA501-2M	Din 32 Rail unslotted 2 meter	50
	CA501-2M-S	Din 32 Rail slotted 2 meter	50
	CA701-1M	Din 35 Rail unslotted 1 meter	50
	CA701-2M	Din 35 Rail unslotted 2 meter	50
	CA701-2M-S	Din 35 Rail slotted 2 meter	50
	CA701-1M-S	Din 35 Rail slotted 1 meter	50
	CA701-15-1M	Din 35 Rail 15 deep unslotted 1 meter	50
	CA701-15-1M-S	Din 35 Rail 15 deep slotted 1 meter	50
	CA701-15-2M	Din 35 Rail 15 deep unslotted 2 meter	50
	CA701-15-2M-S	Din 35 Rail 15 deep slotted 2 meter	50
	CA509/K10	Marking Tag Blank suitable for CTS10U / CGT10U / CGT10N / CHV10U / CTS10USC / STH4 / STH4DT / STH4DTS / CSC10T Terminal Blocks	100
	SCS0.8/4	Electricians Screwdriver for slotted screws	10
	MC10	MARKER CARD 10MM PITCH WITH 42 TAGS	10

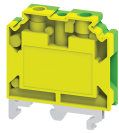
### APPROVALS



### NOTES

The Rated current is with the use of copper (Cu) conductor/Wire

CGT10U

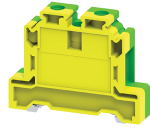


**connectwell**  
THE RIGHT CONNECTION

**RATINGS AS PER STANDARDS**

<b>STANDARDS</b>	<b>UL 1059</b>	<b>CSA C.22.2 No:158</b>	<b>DIN EN60947-7-2</b>
Approvals	UL	CSA	VDE
Conductor Cross Section Stranded min.	16 AWG	22 AWG	1.5 mm <sup>2</sup>
Conductor Cross Section Stranded max.	8 AWG	6 AWG	10 mm <sup>2</sup>
Tightening Torque	14 lb-in	14 lb-in	1.2 Nm
<b>STANDARDS</b>	<b>IEC/EN60947-7-2</b>	<b>EN60079-7</b>	<b>EN60079-7</b>
Approvals	CE	ATEX	ATEX-IECex
Conductor Cross Section Stranded min.	0.2 mm <sup>2</sup>	1.5 mm <sup>2</sup>	1.5 mm <sup>2</sup>
Conductor Cross Section Stranded max.	10 mm <sup>2</sup>	10 mm <sup>2</sup>	10 mm <sup>2</sup>
Tightening Torque	1.2 Nm	1.2 Nm	1.2 Nm
Operating Temperature Range		-40 to +85 °C	
<b>STANDARDS</b>	<b>IEC 60079-0 &amp; IEC 60079-7</b>		
Approvals	AEx		
Conductor Cross Section Stranded min.	16 AWG		
Conductor Cross Section Stranded max.	8 AWG		
Tightening Torque	14 lb-in		

# CGT16N



**connectwell**  
THE RIGHT CONNECTION

## 16 sq.mm Ground / Earth Terminal Blocks

These Terminal Blocks are used for Grounding / Earthing Wires. They are Green-Yellow colour coded as per industries standard. They have the same top profile as their respective feed through Terminal Blocks.

### TECHNICAL DATA

Tightening Torque	1.2 Nm
Housing Material	Polymide
Product Function	Earthing/Grounding
Wire Entry Orientation	Side Entry
Mounting Possibility	DIN 35/DIN 35-15 Rail
Screw Size	M4
Operated by	Screwdriver
Rated Surge Voltage	8 KV
Pollution Degree	3

### CONNECTION DATA

Conductor Cross Section Stranded min.	0.2 mm <sup>2</sup>
Conductor Cross Section Stranded max.	16 mm <sup>2</sup>
Conductor Cross Section AWG/Kcmil min	20 AWG
Conductor Cross Section AWG/Kcmil max	4 AWG
Conductor Cross Section Stranded with Ferrule/Lug min	0.2 mm <sup>2</sup>
Conductor Cross Section Stranded with Ferrule/Lug max	16 mm <sup>2</sup>
2 Conductors with same Cross Section Stranded min	0.2 mm <sup>2</sup>
2 Conductor with same Cross Section Stranded max	10 mm <sup>2</sup>
2 Conductors with same Cross Section Stranded with TWIN Ferrule/Lug min	0.2 mm <sup>2</sup>
2 Conductor with same Cross Section Stranded with TWIN Ferrule/Lug max	10 mm <sup>2</sup>
Stripping Length	12 mm
Internal Cylindrical Guage	A7

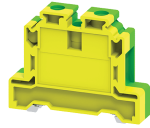
### DIMENSIONS

Height with DIN 35 x 15 mm rail	56 mm
Height with DIN 35 x 7.5 mm rail	48.5 mm
Length	55 mm
Width (Thickness)	12 mm

### ORDERING INFORMATION

CAT. NO.	DESCRIPTION	STD. PACK
CGT16N	16 sq.mm Grounding / Earthing Terminal Block.	50

CGT16N



**connectwell**  
THE RIGHT CONNECTION

**APPROVALS**



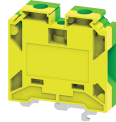
**NOTES**

The Rated current is with the use of copper (Cu) conductor/Wire

**RATINGS AS PER STANDARDS**

STANDARDS	UL 1059	IEC/EN60947-7-2	CSA C.22.2 No:158
Approvals	UL	CE	CSA
Conductor Cross Section Stranded min.	20 AWG	0.2 mm <sup>2</sup>	20 AWG
Conductor Cross Section Stranded max.	4 AWG	16 mm <sup>2</sup>	4 AWG
Tightening Torque	14 lb-in	2 Nm	14 lb-in
STANDARDS	EN60079-7	EN60079-7	
Approvals	ATEX	ATEX-IECex	
Conductor Cross Section Stranded min.	2.5 mm <sup>2</sup>	2.5 mm <sup>2</sup>	
Conductor Cross Section Stranded max.	16 mm <sup>2</sup>	16 mm <sup>2</sup>	
Tightening Torque	2 Nm	2 Nm	
Operating Temperature Range	-40 to +85 °C		

# CGT35U



## 35 sq.mm Ground / Earth Terminal Blocks for multi-rail mounting

These Terminal Blocks are used for Grounding / Earthing Wires. They are Green-Yellow colour coded as per industries standard. They have the same top profile as their respective feed through Terminal Blocks.

### TECHNICAL DATA

Tightening Torque	2.5 Nm
Housing Material	Polymide
Product Function	Earthing/Grounding
Wire Entry Orientation	Side Entry
Mounting Possibility	DIN 32/DIN 35/DIN 35-15 Rail
Screw Size	M6
Operated by	Screwdriver
Rated Surge Voltage	8 KV
Pollution Degree	3

### CONNECTION DATA

Conductor Cross Section Stranded min.	2.5 mm <sup>2</sup>
Conductor Cross Section Stranded max.	35 mm <sup>2</sup>
Conductor Cross Section AWG/Kcmil min	8 AWG
Conductor Cross Section AWG/Kcmil max	2 AWG
Conductor Cross Section Stranded with Ferrule/Lug min	2.5 mm <sup>2</sup>
Conductor Cross Section Stranded with Ferrule/Lug max	35 mm <sup>2</sup>
2 Conductors with same Cross Section Stranded min	2.5 mm <sup>2</sup>
2 Conductor with same Cross Section Stranded max	25 mm <sup>2</sup>
Stripping Length	15 mm
Internal Cylindrical Guage	A9

### DIMENSIONS

Height with DIN 32 rail	68 mm
Height with DIN 35 x 15 mm rail	70.5 mm
Height with DIN 35 x 7.5 mm rail	63.2 mm
Length	58 mm
Width (Thickness)	16 mm

### ORDERING INFORMATION

CAT. NO.	DESCRIPTION	STD. PACK
CGT35U	35 sq.mm Grounding / Earthing Terminal Block.	20

### ACCESSORIES

IMAGES	CAT. NO.	DESCRIPTION	STD. PACK
	CA501-1M	Din 32 Rail unslotted 1 meter	50
	CA501-1M-S	Din 32 Rail slotted 1 meter	50
	CA501-2M	Din 32 Rail unslotted 2 meter	50

### ACCESSORIES

IMAGES	CAT. NO.	DESCRIPTION	STD. PACK
	CA501-2M-S	Din 32 Rail slotted 2 meter	50
	CA701-1M	Din 35 Rail unslotted 1 meter	50
	CA701-2M	Din 35 Rail unslotted 2 meter	50
	CA701-2M-S	Din 35 Rail slotted 2 meter	50
	CA701-1M-S	Din 35 Rail slotted 1 meter	50
	CA701-15-1M	Din 35 Rail 15 deep unslotted 1 meter	50
	CA701-15-1M-S	Din 35 Rail 15 deep slotted 1 meter	50
	CA701-15-2M	Din 35 Rail 15 deep unslotted 2 meter	50
	CA701-15-2M-S	Din 35 Rail 15 deep slotted 2 meter	50
	CA509/K16	Marking Tag Blank suitable for CTS35UNA / CGT35U Terminal Blocks	100
	SCS1/5.5	Electricians Screwdriver for slotted screws	10
	MC16	MARKER CARD 16MM PITCH WITH 24 TAGS	10

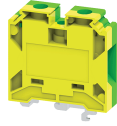
### APPROVALS



### NOTES

The Rated current is with the use of copper (Cu) conductor/Wire  
Flammability Grade V0 as per UL 94

CGT35U



**connectwell**  
THE RIGHT CONNECTION

**RATINGS AS PER STANDARDS**

<b>STANDARDS</b>	<b>UL 1059</b>	<b>CSA C.22.2 No:158</b>	<b>DIN EN60947-7-2</b>
Approvals	UL	CSA	VDE
Conductor Cross Section Stranded min.	8 AWG	8 AWG	10 mm <sup>2</sup>
Conductor Cross Section Stranded max.	2 AWG	2 AWG	35 mm <sup>2</sup>
Tightening Torque	25 lb-in	25 lb-in	2.5 Nm
<b>STANDARDS</b>	<b>IEC/EN60947-7-2</b>	<b>EN60079-7</b>	<b>EN60079-7</b>
Approvals	CE	ATEX	ATEX-IECex
Conductor Cross Section Stranded min.	2.5 mm <sup>2</sup>	10 mm <sup>2</sup>	10 mm <sup>2</sup>
Conductor Cross Section Stranded max.	35 mm <sup>2</sup>	35 mm <sup>2</sup>	35 mm <sup>2</sup>
Tightening Torque	2.5 Nm	2.5 Nm	2.5 Nm
Operating Temperature Range		-40 to +85 °C	
<b>STANDARDS</b>	<b>IEC 60079-0 &amp; IEC 60079-7</b>		
Approvals	AEx		
Conductor Cross Section Stranded min.	8 AWG		
Conductor Cross Section Stranded max.	2 AWG		
Tightening Torque	25 lb-in		

# CGT50/70N



## 70 sq.mm Ground / Earth Terminal Blocks for multi-rail mounting

These Terminal Blocks are used for Grounding / Earthing Wires. They are Green-Yellow colour coded as per industries standard. They have the same top profile as their respective feed through Terminal Blocks.

### TECHNICAL DATA

Tightening Torque	3 Nm
Housing Material	Polymide
Standard Colour	Yellow - Green
Product Function	Earthing/Grounding
Wire Entry Orientation	Side Entry
Mounting Possibility	DIN 35/DIN 35-15 Rail
Screw Size	M6
Operated by	Screwdriver
Rated Surge Voltage	8 KV
Pollution Degree	3

### CONNECTION DATA

Conductor Cross Section Stranded min.	10 mm <sup>2</sup>
Conductor Cross Section Stranded max.	70 mm <sup>2</sup>
Conductor Cross Section AWG/Kcmil min	8 AWG
Conductor Cross Section AWG/Kcmil max	2 AWG
Conductor Cross Section Stranded with Ferrule/Lug min	10 mm <sup>2</sup>
Conductor Cross Section Stranded with Ferrule/Lug max	70 mm <sup>2</sup>
2 Conductors with same Cross Section Stranded min	10 mm <sup>2</sup>
2 Conductor with same Cross Section Stranded max	70 mm <sup>2</sup>
Stripping Length	22 mm

### DIMENSIONS

Height with DIN 35 x 15 mm rail	78.1 mm
Height with DIN 35 x 7.5 mm rail	71.1 mm
Length	77 mm
Width (Thickness)	20 mm

### ORDERING INFORMATION

CAT. NO.	DESCRIPTION	STD. PACK
CGT50/70N	70 sq.mm Ground/Earth terminal block in Green-Yellow colour.	20

### ACCESSORIES

IMAGES	CAT. NO.	DESCRIPTION	STD. PACK
	CA701-1M	Din 35 Rail unslotted 1 meter	50
	CA701-2M	Din 35 Rail unslotted 2 meter	50
	CA701-2M-S	Din 35 Rail slotted 2 meter	50

### ACCESSORIES

IMAGES	CAT. NO.	DESCRIPTION	STD. PACK
	CA701-1M-S	Din 35 Rail slotted 1 meter	50
	CA701-15-1M	Din 35 Rail 15 deep unslotted 1 meter	50
	CA701-15-1M-S	Din 35 Rail 15 deep slotted 1 meter	50
	CA701-15-2M	Din 35 Rail 15 deep unslotted 2 meter	50
	CA701-15-2M-S	Din 35 Rail 15 deep slotted 2 meter	50
	CA509/K16	Marking Tag Blank suitable for CTS35UNA / CGT35U Terminal Blocks	100
	SCS1/5.5	Electricians Screwdriver for slotted screws	10
	MC16	MARKER CARD 16MM PITCH WITH 24 TAGS	10

### APPROVALS



### NOTES

The Rated current is with the use of copper (Cu) conductor/Wire

CGT50/70N



**connectwell**  
THE RIGHT CONNECTION

**RATINGS AS PER STANDARDS**

<b>STANDARDS</b>	<b>UL 1059</b>	<b>CSA C.22.2 No:158</b>	<b>IEC/EN60947-7-2</b>
Approvals	UL	CSA	CE
Conductor Cross Section Stranded min.	8 AWG	8 AWG	10 mm <sup>2</sup>
Conductor Cross Section Stranded max.	2 AWG	2 AWG	70 mm <sup>2</sup>
Tightening Torque	38 lb-in	38 lb-in	3 Nm