

CR series

Ractical LED switches with various lineup



Model	Push Button Switch					
	Flat Ø30	Flat Ø25	Protrusion Ø22	Flat Ø25		
Appearance 						
Actuator code	CRF-F30	CRF-F25	CRF-P30	CRF-P25		
Model	Illuminated Push Button Switch					
	Flat Ø30	Flat Ø25	Protective guard Ø30	Flat Ø25	Protrusion Ø22	Protective guard Ø25
Appearance 						
Actuator code	CRX-F30	CRX-P30	CRX-G30	CRX-F25	CRX-P25	CRX-G25
Model	Indicator light					
	Ø30	Ø25				
Appearance 						
Actuator code	CRP-30	CRP-25				
Model	Selector switch					
	단레버		장레버			
	Ø30	Ø25	Ø35	Ø25		
Appearance 						
Actuator code	CRS-30	CRS-25	CRSL-30	CRSL-25		
Model	Illuminated selector switch					
	Ø30	Ø25	Ø30	Ø25		
Appearance 						
Actuator code	CRT-30	CRT-25	CRTL-30	CRTL-25		
Model	Key selector switch					
	Ø30	Ø25				
Appearance 						
Actuator code	CRK-30	CRK-25				

Model	Emergency stop switch	
	Ø30	Ø25
Appearance 		
Actuator code	CRE-30M	CRE-25M
Appearance 		
Actuator code	CRE-30R	CRE-25R
Model	Illuminated Emergency stop switch	
	Ø30	Ø25
Appearance 		
Actuator code	CRA-30M	CRA-25M
Appearance 		
Actuator code	CRA-30R	CRA-25R
Model	Buzzer	
	Ø30	Ø25
Appearance		
Actuator code	CRB-30	CRB-25

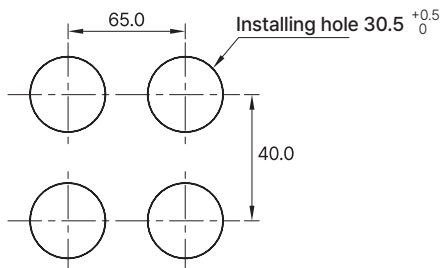
h Specification

Model		Content
Contact Structure		M3.5 Threaded, 1a1b
Contact Behavior		Slow-action
Installation panel thickness		1 ~ 6 mm (Without accessories)
Terminal Tightening Torque		0.8 N·m or less
Rated voltage		250 V a.c.
Current Rating		5A 250 V a.c.
Open/Close Frequency		30 times / minute
Insulation resistance		100 MΩ or more (500 V d.c.)
Dielectric strength		1,500 V a.c. 50/60 Hz 1 minute
Contact resistance		50 mΩ or less (Initial values)
Vibration resistance		10 ~ 55 Hz double amplitude 1.5 mm
Shock resistance	Durability	300 m/s ² or more (30 G or more)
	Malfunction	100 m/s ² or more (10 G or more)
Life	Mechanical	500,000 times or more
	Electrical	100,000 times or more (Rated load)
LAMP Input Power		100 ~ 240 V a.c. / 4.4 VA or less (Voltage drop type LED capacitor)
		380 V a.c. / 2.7 VA or less (Voltage drop type LED capacitor)
		12 ~ 24 V d.c. / a.c. / 18 mA or less (LED resistor voltage dropping method)
Buzzer volume		Approx. 90 dB
Ambient temperature		-20 ~ 55 °C (Without condensation or icing)
Ambient humidity		45 ~ 85% RH
Preservation ambient temperature		-40 ~ 70 °C

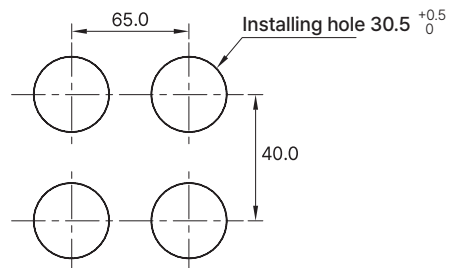
h Panel Machined Dimensions

[Unit : mm]

■ Ø25



■ Ø30



h CR Accessory

Model	Emergency protection cover			Front protective cover	
	EN-36	HEG-25(Protrusion)	HEG-30(Protrusion)	HSC-25P(Protrusion)	HSC-30P(Protrusion)
Application Model	CRE-30, CRA-30	CRE-25, CRA-25	CRE-30, CRA-30	CRF-F25, CRX-F25	CRF-F30, CRX-F30
Appearance					
Model	Silicone cover		Tightening tool		
	CP-25WPC	CP-30WPC	FIX HEAD-CR25	FIX HEAD-CR30	FIX HANDLE
Application Model	Ø25	Ø30	Ø25	Ø30	손잡이
Appearance					

h Actuator code

■ CRF series

Model	Code					Contents
CRF-	<input type="checkbox"/>	<input type="checkbox"/>	<input type="checkbox"/>	<input type="checkbox"/>	<input type="checkbox"/>	Push button switch
Control unit	F					Flush
	P					Extended type
Installing hole	25					Ø25
	30					Ø30
Operation function	M					Momentary
	A					Alternate
Contact configuration			1			1a1b
			2			2a2b
Control unit color (cap color)					R	R(Red), G(Green), Y(Yellow), A(Blue),W(White), B(Black)

■ CRX series

Model	Code					Contents
CRX-	<input type="checkbox"/>	<input type="checkbox"/>	<input type="checkbox"/>	<input type="checkbox"/>	<input type="checkbox"/>	Illuminated push button switch
Control unit	F					Flush
	P					Protrusion type
	G					Protective guide type
Installing hole	25					Ø25
	30					Ø30
Operation function	M					Momentary
	A					Alternate
Retard input voltage(power voltage)			A			100 - 240 V a.c. L.E.D(Condenser Voltage Dropping Type)
			D			12 - 24 V d.c. / a.c. L.E.D(Resistance Voltage Dropping Type)
Control unit color (cap color)					R	R(Red), G(Green), Y(Yellow), A(Blue),W(White), B(Black)

■ CRP series

Model	Code			Contents
CRP-	<input type="checkbox"/>	<input type="checkbox"/>		Indicator light
Installing hole	25			Ø25
	30			Ø30
Retard input voltage (power voltage)		A		100 - 240 V a.c. L.E.D(Condenser Voltage Dropping Type)
		D		12 - 24 V d.c. / a.c. L.E.D(Resistance Voltage Dropping Type)
Control unit color (cap color)			R	R(Red), G(Green), Y(Yellow), A(Blue),W(White), B(Black)

■ CRS series

Model	Code			Contents
CRS-	<input type="checkbox"/>	<input type="checkbox"/>	<input type="checkbox"/>	Selector Switch
Installing hole	25			Ø25
	30			Ø30
Operation function	2A			2 Positions Alternate Operation
	2R			2 Positions Momentary Operation
	3A			3 Positions Alternate Operation
	3R			3 Positions Momentary Operation
Contact configuration			1	1a1b
			2	2a2b
Control unit color (cap color)				Black(solid)

h Actuator code

■ CRSL series

Model	Code			Contents
CRSL-	<input type="checkbox"/>	<input type="checkbox"/>	<input type="checkbox"/>	Long Lever Selector Switch
Installing hole	25			Ø25
	30			Ø30
Operation function	2A			2 Positions Alternate Operation
	2R			2 Positions Momentary Operation
	3A			3 Positions Alternate Operation
	3R			3 Positions Momentary Operation
Contact configuration		1		1a1b
		2		2a2b
Control unit color (cap color)				Black(solid)

■ CRT series

Model	Code				Contents
CRT-	<input type="checkbox"/>	<input type="checkbox"/>	<input type="checkbox"/>	<input type="checkbox"/>	Illuminated Selector Switch
Installing hole	25				Ø25
	30				Ø30
Operation function	2A				2 Positions Alternate Operation
	2R				2 Positions Momentary Operation
	3A				3 Positions Alternate Operation
	3R				3 Positions Momentary Operation
Power voltage		A			100 - 240 V a.c. L.E.D(Condenser Voltage Dropping Type)
		D			12 - 24 V d.c. / a.c. L.E.D(Resistance Voltage Dropping Type)
Control unit color (cap color)				R	R(Red), G(Green), Y(Yellow), A(Blue), W(White) * Order-made BR(Black handle/Red indicator), BG(Black handle/Green indicator), BY(Black handle/Yellow indicator), BA(Black handle/Blue indicator), BW(Black handle/White indicator)

•Basic contact configuration : 1a1b

■ CRTL series

Model	Code				Contents
CRTL-	<input type="checkbox"/>	<input type="checkbox"/>	<input type="checkbox"/>	<input type="checkbox"/>	Illuminated Long Lever Selector Switch
Installing hole	25				Ø25
	30				Ø30
Operation function	2A				2 Positions alternate Operation
	2R				2 Positions Momentary Operation
	3A				3 Positions alternate Operation
	3R				3 Positions Momentary Operation
Power voltage		A			100 - 240 V a.c. L.E.D(Condenser Voltage Dropping Type)
		D			12 - 24 V d.c. / a.c. L.E.D(Resistance Voltage Dropping Type)
Control unit color (cap color)				R	R(Red), G(Green), Y(Yellow), A(Blue), W(White) * Order-made BR(Black handle/Red indicator), BG(Black handle/Green indicator), BY(Black handle/Yellow indicator), BA(Black handle/Blue indicator), BW(Black handle/White indicator)

•Basic contact configuration : 1a1b

■ CRK series

Model	Code				Contents
CRK-	<input type="checkbox"/>	<input type="checkbox"/>	<input type="checkbox"/>	<input type="checkbox"/>	Key Selector Switch
Installing hole	25				Ø25
	30				Ø30
Operation function	2A				2 Positions Alternate Operation
	2R				2 Positions Momentary Operation
	3A				3 Positions Alternate Operation
	3R				3 Positions Momentary Operation
Contact configuration	1				1a1b
	2				2a2b
Key removing position	L				Left
	R				Right
	C				Center
With 2-position models, the center key removing position is excluded					

■ CRE series

형명	Code				Contents
CRE-	<input type="checkbox"/>	<input type="checkbox"/>	<input type="checkbox"/>	<input type="checkbox"/>	Emergency Push Button Switch
Installing hole	25				Ø25
	30				Ø30
Operation function	M				Momentary
	R				Push lock turn reset
Contact configuration	1				1a1b
	2				2a2b
Actuator color (cap color)				R	R(Red), G(Green), Y(Yellow)

■ CRA series

Model	Code				Contents
CRA-	<input type="checkbox"/>	<input type="checkbox"/>	<input type="checkbox"/>	<input type="checkbox"/>	Illuminated Emergency Push Button Switch
Installing Hole	25				Ø25형
	30				Ø30형
Operation Function	M				Momentary
	R				Push lock turn reset
Power Voltage	A				100 - 240 V a.c. L.E.D(Condenser Voltage Dropping Type)
	D				12 - 24 V d.c. / a.c. L.E.D(Resistance Voltage Dropping Type)
Actuator color (cap color)				R	R(Red), G(Green), Y(Yellow)

• Basic contact configuration : 1a1b

■ CRB series

Model	Code		Contents
CRB-	<input type="checkbox"/>	<input type="checkbox"/>	BUZZER
Installing Hole	25		Ø25
	30		Ø30
Power Voltage	A		100 - 240 V a.c.
	B		12 - 24 V d.c. / a.c.