

58 mm Diameter Absolute Single-Turn Rotary Encoders (Optical)

EP58 Series

INSTRUCTION MANUAL

TCD210035AA



Thank you for choosing our Autonics product.

Read and understand the instruction manual and manual thoroughly before using the product.

For your safety, read and follow the below safety considerations before using.

For your safety, read and follow the considerations written in the instruction manual, other manuals and Autonics website.

Keep this instruction manual in a place where you can find easily.

The specifications, dimensions, etc. are subject to change without notice for product improvement. Some models may be discontinued without notice.

Follow Autonics website for the latest information.

Safety Considerations

- Observe all 'Safety Considerations' for safe and proper operation to avoid hazards.
- ⚠ symbol indicates caution due to special circumstances in which hazards may occur.

⚠ Warning Failure to follow instructions may result in serious injury or death.

01. Fail-safe device must be installed when using the unit with machinery that may cause serious injury or substantial economic loss. (e.g. nuclear power control, medical equipment, ships, vehicles, railways, aircraft, combustion apparatus, safety equipment, crime / disaster prevention devices, etc.)
Failure to follow this instruction may result in personal injury, economic loss or fire.

02. Do not use the unit in the place where flammable / explosive / corrosive gas, high humidity, direct sunlight, radiant heat, vibration, impact or salinity may be present.
Failure to follow this instruction may result in explosion or fire.

03. Install on a device panel to use.
Failure to follow this instruction may result in fire.

04. Do not connect, repair, or inspect the unit while connected to a power source.
Failure to follow this instruction may result in fire.

05. Check 'Connections' before wiring.
Failure to follow this instruction may result in fire.

06. Do not disassemble or modify the unit.
Failure to follow this instruction may result in fire.

⚠ Caution Failure to follow instructions may result in injury or product damage.

01. Use the unit within the rated specifications.

Failure to follow this instruction may result in fire or product damage.

02. Do not short the load.

Failure to follow this instruction may result in fire.

03. Do not use the unit near the place where there is the equipment which generates strong magnetic force or high frequency noise and strong alkaline, strong acidic exists.
Failure to follow this instruction may result in product damage.

Cautions during Use

- Follow instructions in 'Cautions during Use'. Otherwise, it may cause unexpected accidents.
- 5 VDC≐, 12 - 24 VDC≐ power supply should be insulated and limited voltage / current or Class 2, SELV power supply device.
- For using the unit with the equipment which generates noise (switching regulator, inverter, servo motor, etc.), ground the shield wire to the F.G. terminal.
- Ground the shield wire to the F.G. terminal.
- When supplying power with SMPS, ground the F.G. terminal and connect the noise canceling capacitor between the 0 V and F.G. terminals.
- Wire as short as possible and keep away from high voltage lines or power lines, to prevent inductive noise.
- Check the wire type and response frequency when extending wire because of distortion of waveform or residual voltage increment etc. by line resistance or capacity between lines.
- This unit may be used in the following environments.
 - Indoors (in the environment condition rated in 'Specifications')
 - Altitude max. 2,000 m
 - Pollution degree 2
 - Installation category II

Cautions during Installation

- Install the unit correctly with the usage environment, location, and the designated specifications.
- Do not load overweight on the shaft.
- Do not put strong impact when insert a coupling into shaft.
Failure to follow this instruction may result in product damage.
- When fixing the product or coupling with a wrench, tighten under 0.15 N·m.
- If the coupling error (parallel misalignment, angular misalignment) between the shaft increases while installation, the life cycle of the coupling and the encoder can be shorten.
- Do not apply tensile strength over 30 N to the cable.

Ordering Information

This is only for reference, the actual product does not support all combinations. For selecting the specified model, follow the Autonics website.

EP58 ① ② - ③ - ④ ⑤ - ⑥ - ⑦

① Shaft type

SC: Shaft clamping type
SS: Shaft synchro type
HB: Hollow Built-in type

② Shaft outer diameter / Shaft inner diameter

6: Ø 6 mm
8: Ø 8 mm
10: Ø 10 mm

③ Resolution

Number: Refer to resolution in 'Output Phase / Output Angle'

④ Output code

1: BCD code
2: Binary code
3: Gray code

⑤ Rotating direction

F: Increase output when the rotating direction is clockwise base on facing the shaft
R: Increase output when the rotating direction is counter-clockwise base on facing the shaft

⑥ Control output

N: NPN open collector output
P: PNP open collector output

⑦ Power supply

5: 5 VDC≐ ± 5%
24: 12 - 24 VDC≐ ± 5%

Product Components

Shaft type	Shaft Clamping type	Shaft Synchro type	Hollow Built-in type
Product Components	Product, Instruction manual		Product (+ bracket), Instruction manual
Bolt	× 10	× 8	× 4
Coupling	× 1	× 1	-
Bracket	× 1	× 1	-

Connections

- Unused wires must be insulated.
- The metal case and shield cable of encoders must be grounded (F.G.).
- F.G. (Frame Ground) must be grounded separately.
- Since exclusive driver IC is used for output circuit, be aware of short circuits when wiring each output wires.
- N · C: not connected

■ BCD code

Color	Function	Refer
White	+V	power
Black	GND	
Brown	2 ⁰	
Red	2 ¹	
Orange	2 ²	
Yellow	2 ³	
Blue	2 ⁰ × 10	
Purple	2 ¹ × 10	
Gray	2 ² × 10	
White / Brown	2 ³ × 10	
White / Red	2 ⁰ × 10 ²	
White / Orange	2 ¹ × 10 ²	
White / Yellow	2 ² × 10 ²	
White / Blue	2 ³ × 10 ²	
White / Purple	2 ⁰ × 10 ³	
Shield	F.G.	signal shield

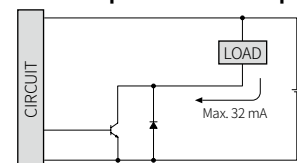
■ Binary / Gray code

Color	Function	Refer
White	+V	power
Black	GND	
Brown	2 ⁰	
Red	2 ¹	
Orange	2 ²	
Yellow	2 ³	
Blue	2 ⁴	
Purple	2 ⁵	
Gray	2 ⁶	
White / Brown	2 ⁷	
White / Red	2 ⁸	
White / Orange	2 ⁹	
White / Yellow	N · C	
White / Blue	N · C	
White / Purple	N · C	
Shield	F.G.	signal shield

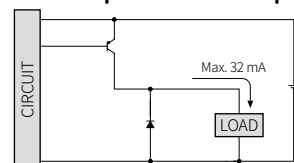
Inner Circuit

- The output circuit is identical for each output bit.
- Be aware of circuit break in case of overload or short beyond the specifications.

■ NPN open collector output



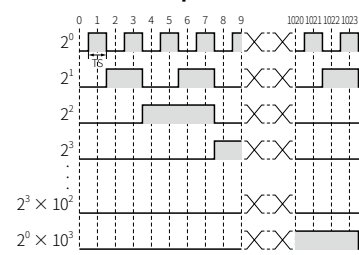
■ PNP open collector output



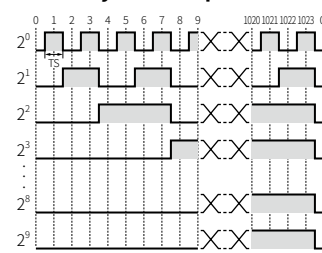
Output Waveform

- Following waveform is based on the positive logic. (In case of negative logic, the waveform is opposite to corresponding waveform.)

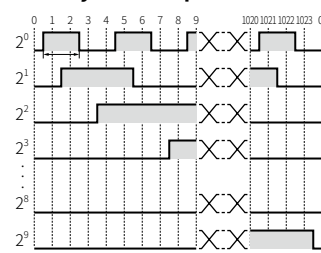
■ BCD code output



■ Binary code output



■ Gray code output



Specifications

Model	EP58□-□-□□-□-□-□	EP58□-□-□□-□-□-□-□
Resolution ⁰¹⁾	≤ 1024 division	
Output code	BCD / Binary / Gray code model	
Control output	NPN open collector output	PNP open collector output
Inflow current	≤ 32 mA	-
Residual voltage	≤ 1 VDC≐	-
Outflow current	-	≤ 32 mA
Output voltage	-	≥ (power supply - 1.5) VDC≐
Response speed ⁰²⁾	T _{ON} ≤ 800 nsec, T _{OFF} ≤ 800 nsec	
Max. response freq.	35 kHz	
Max. allowable revolution ⁰³⁾	3,000 rpm	
Approval	CE ENEC	

⁰¹⁾ Refer to resolution in 'Output Phase / Output Angle'

⁰²⁾ Based on cable length: 2 m, I_{sink} = 32 mA

⁰³⁾ Select resolution to satisfy Max. allowable revolution ≥ Max. response revolution

$$\left[\frac{\text{max. response revolution (rpm)}}{\text{resolution}} \right] \times 60 \text{ sec}$$

Shaft type	Shaft clamping type	Shaft synchro type	Hollow Built-in type
Starting torque	≤ 0.004 N·m		≤ 0.009 N·m
Inertia moment	≤ 15 g·cm ² (1.5 × 10 ⁻⁶ kg·m ²)		≤ 20 g·cm ² (2 × 10 ⁻⁶ kg·m ²)
Allowable shaft load	Radial: ≤ 10 kgf, Thrust: ≤ 2.5 kgf		Radial: ≤ 2 kgf, Thrust: ≤ 1 kgf
Unit weight (packaged)	≈ 435 g (≈ 545 g)	≈ 415 g (≈ 525 g)	≈ 410 g (≈ 520 g)

Power supply	5 VDC≐ ± 5% (ripple P-P: ≤ 5%) / 12 - 24 VDC≐ ± 5% (ripple P-P: ≤ 5%) model
Current consumption	≤ 100 mA (no load)
Insulation resistance	Between all terminals and case: ≥ 100 MΩ (500 VDC≐ megger)
Dielectric strength	Between all terminals and case: 750 VAC ~ 50 / 60 Hz for 1 minute
Vibration	1 mm double amplitude at frequency 10 to 55 Hz (for 1 minute) in each X, Y, Z direction for 2 hours
Shock	≤ 50 G
Ambient temp.	-10 to 70 °C, storage: -25 to 85 °C (no freezing or condensation)
Ambient humi.	35 to 85%RH, storage: 35 to 90%RH (no freezing or condensation)
Protection rating	IP50 (IEC standard)
Connection	Axial cable type (cable gland)
Cable spec.	Ø 7 mm, 15-wire, 2 m, shield cable

Output Phase / Output Angle

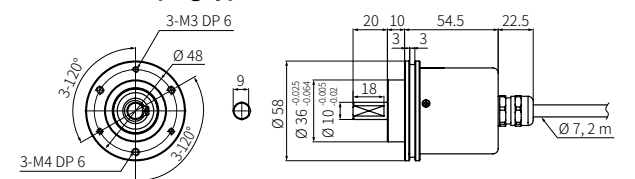
- TS = Signal Pulse

Resolution	BCD code	Binary code	Gray code
1024	TS: 0.3515° ± 15' (13 bit)	TS: 0.3515° ± 15' (10 bit)	TS: 0.703° ± 15' (10 bit)
720	TS: 0.5° ± 25' (11 bit)	TS: 0.5° ± 25' (10 bit)	TS: 1° ± 25' (10 bit)
512	TS: 0.703° ± 15' (11 bit)	TS: 0.703° ± 15' (9 bit)	TS: 1.406° ± 15' (9 bit)
360	TS: 1° ± 25' (10 bit)	TS: 1° ± 25' (9 bit)	TS: 2° ± 25' (9 bit)
256	TS: 1.406° ± 15' (10 bit)	TS: 1.406° ± 15' (8 bit)	TS: 2.8125° ± 15' (8 bit)
180	TS: 2° ± 25' (9 bit)	TS: 2° ± 25' (8 bit)	TS: 4° ± 25' (8 bit)
128	TS: 2.8125° ± 15' (9 bit)	TS: 2.8125° ± 15' (7 bit)	TS: 5.625° ± 15' (7 bit)
90	TS: 4° ± 25' (8 bit)	TS: 4° ± 25' (7 bit)	TS: 8° ± 25' (7 bit)
64	TS: 5.625° ± 15' (7 bit)	TS: 5.625° ± 15' (6 bit)	TS: 11.25° ± 15' (6 bit)
45	TS: 8° ± 25' (7 bit)	TS: 8° ± 25' (6 bit)	TS: 16° ± 25' (6 bit)

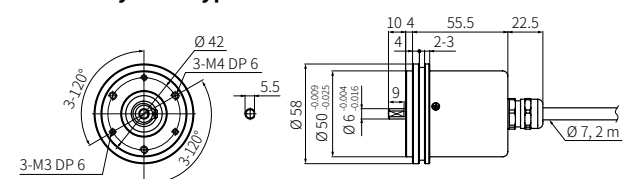
Dimensions

- Unit: mm, For the detailed drawings, follow the Autonics website.

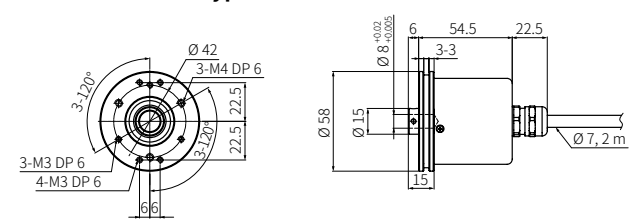
■ Shaft clamping type



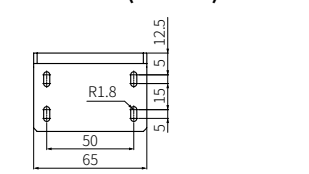
■ Shaft synchro type



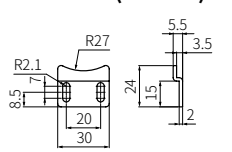
■ Hollow Built-in type



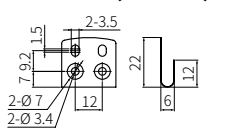
■ Bracket(EP58SC)



■ Bracket(EP58SS)

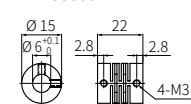


■ Bracket(EP58HB)

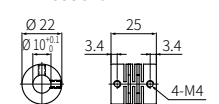


■ Coupling

- EP58SS6



- EP58SC10



- Parallel misalignment: ≤ 0.25 mm
- Angular misalignment: ≤ 5°
- End-play: ≤ 0.5 mm