

50 mm Diameter Absolute Multi-Turn Rotary Encoders (Optical)

EPM50 Series

INSTRUCTION MANUAL

TCD210036AA

Autonics

Thank you for choosing our Autonics product.

Read and understand the instruction manual and manual thoroughly before using the product.

For your safety, read and follow the below safety considerations before using.

For your safety, read and follow the considerations written in the instruction manual, other manuals and Autonics website.

Keep this instruction manual in a place where you can find easily.

The specifications, dimensions, etc. are subject to change without notice for product improvement. Some models may be discontinued without notice.

Follow Autonics website for the latest information.

Safety Considerations

- Observe all 'Safety Considerations' for safe and proper operation to avoid hazards.
- ⚠ symbol indicates caution due to special circumstances in which hazards may occur.

⚠ Warning Failure to follow instructions may result in serious injury or death.

01. Fail-safe device must be installed when using the unit with machinery that may cause serious injury or substantial economic loss. (e.g. nuclear power control, medical equipment, ships, vehicles, railways, aircraft, combustion apparatus, safety equipment, crime / disaster prevention devices, etc.)
Failure to follow this instruction may result in personal injury, economic loss or fire.

02. Do not use the unit in the place where flammable / explosive / corrosive gas, high humidity, direct sunlight, radiant heat, vibration, impact or salinity may be present.
Failure to follow this instruction may result in explosion or fire.

03. Install on a device panel to use.
Failure to follow this instruction may result in fire.

04. Do not connect, repair, or inspect the unit while connected to a power source.
Failure to follow this instruction may result in fire.

05. Check 'Connections' before wiring.
Failure to follow this instruction may result in fire.

06. Do not disassemble or modify the unit.
Failure to follow this instruction may result in fire.

⚠ Caution Failure to follow instructions may result in injury or product damage.

01. Use the unit within the rated specifications.

Failure to follow this instruction may result in fire or product damage.

02. Do not short the load.

Failure to follow this instruction may result in fire.

03. Do not use the unit near the place where there is the equipment which generates strong magnetic force or high frequency noise and strong alkaline, strong acidic exists.

Failure to follow this instruction may result in product damage.

Cautions during Use

- Follow instructions in 'Cautions during Use'. Otherwise, it may cause unexpected accidents.
- 12 - 24 VDC≐ power supply should be insulated and limited voltage / current or Class 2, SELV power supply device.
- For using the unit with the equipment which generates noise (switching regulator, inverter, servo motor, etc.), ground the shield wire to the F.G. terminal.
- Ground the shield wire to the F.G. terminal.
- When supplying power with SMPS, ground the F.G. terminal and connect the noise canceling capacitor between the 0 V and F.G. terminals.
- Wire as short as possible and keep away from high voltage lines or power lines, to prevent inductive noise.
- Check the wire type and response frequency when extending wire because of distortion of waveform or residual voltage increment etc. by line resistance or capacity between lines.
- This unit may be used in the following environments.
 - Indoors (in the environment condition rated in 'Specifications')
 - Altitude max. 2,000 m
 - Pollution degree 2
 - Installation category II

Cautions during Installation

- Install the unit correctly with the usage environment, location, and the designated specifications.
- Do not load overweight on the shaft.
- Do not put strong impact when insert a coupling into shaft. Failure to follow this instruction may result in product damage.
- When fixing the product or coupling with a wrench, tighten under 0.15 N·m.
- If the coupling error (parallel misalignment, angular misalignment) between the shaft increases while installation, the life cycle of the coupling and the encoder can be shorten.
- Do not apply tensile strength over 30 N to the cable.

Ordering Information

This is only for reference, the actual product does not support all combinations. For selecting the specified model, follow the Autonics website.

EPM50 S 8 - 10 13 - B - ① - 24 - ②

① Control output

PN: Parallel NPN open collector output

S: SSI Line driver output

② Connection

No mark: Axial cable type

S: Radial cable type

Product Components

- Product
- Instruction manual
- Bolt × 8
- Coupling × 1
- Bracket × 2

Connections

- Unused wires must be insulated.
- The metal case and shield cable of encoders must be grounded (F.G.).
- F.G. (Frame Ground) must be grounded separately.
- For Parallel NPN open collector output, it is recommended to connect +V and GND of both multi-turn count cable and single-turn data cable.
- Since exclusive driver IC is used for output circuit, be aware of short circuits when wiring each output wires.
- N · C: not connected

■ Parallel NPN open collector output

• Multi-turn count (sheath: black)

| Color | Function | Refer |
|--------------|------------------------|------------------|
| White | +V | Power |
| Black | GND | |
| Brown | 2 ⁰ | |
| Red | 2 ¹ | Multi-turn count |
| Orange | 2 ² | |
| Yellow | 2 ³ | |
| Green | 2 ⁴ | |
| Blue | 2 ⁵ | |
| Purple | 2 ⁶ | |
| Gray | 2 ⁷ | |
| Pink | 2 ⁸ | |
| Clear | 2 ⁹ | |
| Light brown | 2 ¹⁰ | |
| Light yellow | 2 ¹¹ | |
| Light green | 2 ¹² | |
| Light blue | Overflow alarm (OVF) | |
| Light purple | Multi-turn count reset | |
| Shield | F.G. | Signal shield |

• Single-turn data (sheath: gray)

| Color | Function | Refer |
|--------------|------------------------|------------------|
| White | +V | Power |
| Black | GND | |
| Brown | 2 ⁰ | |
| Red | 2 ¹ | Single-turn data |
| Orange | 2 ² | |
| Yellow | 2 ³ | |
| Green | 2 ⁴ | |
| Blue | 2 ⁵ | |
| Purple | 2 ⁶ | |
| Gray | 2 ⁷ | |
| Pink | 2 ⁸ | |
| Clear | 2 ⁹ | |
| Light brown | N · C | |
| Light yellow | Direction | |
| Light green | Latch | |
| Light blue | Clear | |
| Light purple | Single-turn data reset | |
| Shield | F.G. | Signal shield |

■ SSI Line driver output

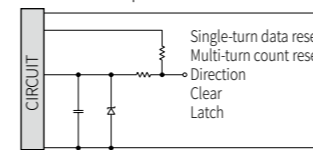
| Color | Function | Refer | |
|--------|------------------------|---------|---------------|
| White | +V | Power | |
| Black | GND | | |
| Brown | CLOCK+ | SSI | |
| Red | CLOCK- | | |
| Orange | DATA+ | | |
| Yellow | DATA- | | |
| Gray | Single-turn data reset | COMMAND | |
| Blue | Multi-turn count reset | | |
| Purple | Clear | | |
| Green | Direction | | |
| Shield | F.G. | | Signal shield |

Inner Circuit

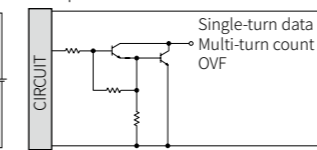
- The output circuit is identical for each output bit.
- Be aware of circuit break in case of overload or short beyond the specifications.

■ Parallel NPN open collector output

• COMMAND input

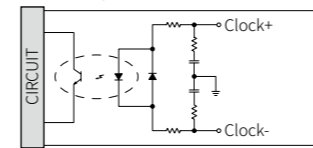


• Output

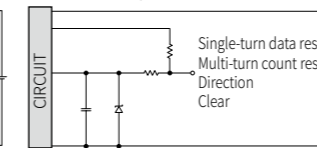


■ SSI Line driver output

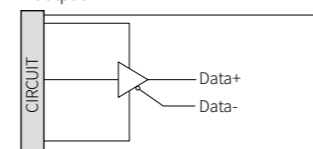
• CLOCK input



• COMMAND input



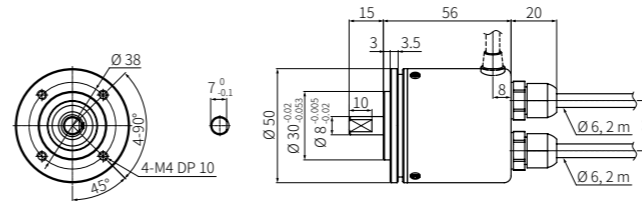
• Output



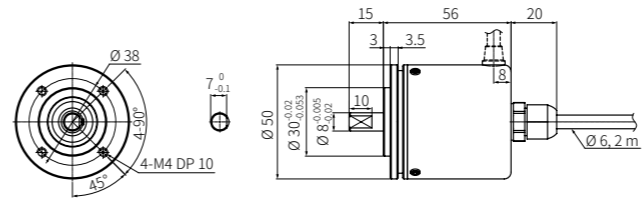
Dimensions

- Unit: mm, For the detailed drawings, follow the Autonics website.

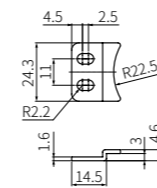
■ Parallele NPN open collector output



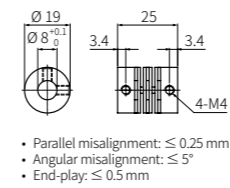
■ SSI Line driver output



■ Bracket



■ Coupling



- Parallel misalignment: ≤ 0.25 mm
- Angular misalignment: ≤ 5°
- End-play: ≤ 0.5 mm

Specifications

| Model | EPM50S8-1013-B-PN-24-□ | EPM50S8-1013-B-S-24-□ |
|--|--|---|
| Resolution | Single-turn: 1024 division, 10 bit Multi-turn: 8192 revolution, 13 bit | |
| Rotation limit when power OFF ⁽⁹¹⁾ | ± 90° | |
| Output code | Binary 2 code | 24 bit, Binary 2 code |
| Output signal | Single-turn data, Multi-turn count, Overflow alarm (OVF) ⁽⁹²⁾ | |
| Control output | Parallel NPN open collector output | SSI (Synchronous Serial Interface) Line driver output |
| Inflow current | ≤ 32 mA | ≤ 20 mA |
| Residual voltage | ≤ 1 VDC≐ | ≤ 0.5 VDC≐ |
| Outflow current | - | ≤ -20 mA |
| Output voltage | - | ≥ 2.5 VDC≐ |
| Output logic | Negative logic output | - |
| Response speed ⁽⁹³⁾ | ≤ 1 μs | - |
| Single-turn data reset ⁽⁹⁴⁾ Multi-turn count reset ⁽⁹⁵⁾ Direction Clear | Input level: 0 - 1 VDC≐ Input logic: Low Active, OPEN or HIGH in common use Input time: ≥ 100 ms | |
| Latch | Input level: 0 - 1 VDC≐ Input logic: Low Active, OPEN or HIGH in common use Input time: ≥ 500 μs | - |
| Clock | - | Input level: 5 VDC≐ ± 5% Input frequency: 100 kHz to 1 MHz |
| Max. response freq. | 50 kHz | - |
| Max. allowable revolution ⁽⁹⁶⁾ | 3,000 rpm | |
| Starting torque | ≤ 0.0069 N·m | |
| Inertia moment | ≤ 40 g·cm ² (4 × 10 ⁻⁶ kg·m ²) | |
| Allowable shaft load | Radial: 10 kgf, Thrust: 2.5 kgf | |
| Unit weight (packaged) | ≈ 475 g (≈ 560 g) | ≈ 324 g (≈ 409 g) |
| Approval | CE ENEC | |

(01) It calibrates the multi-turn count by comparing single-turn data before/after power off without counting multi-turn count when power off. Correct multi-turn count cannot be obtained if a rotating operation exceeding ± 90° is performed at the rotation position when power off.

(02) Outputs when multi-turn count is out of counting range (0 to 8191 revolution).

(03) Based on cable length: 2 m, I sink = 32 mA

(04) If the single-turn data reset signal is applied, the single-turn data will be initialized to 0.

(05) If the multi-turn count reset signal is applied, the multi-turn count will be initialized to 0.

(06) For parallel model Select resolution to satisfy Max. allowable revolution ≥ Max. response revolution
[max. response revolution (rpm) = max. response frequency / resolution × 60 sec]

| | |
|------------------------------|--|
| Power supply | 12 - 24 VDC≐ ± 5% (ripple P-P: ≤ 5%) |
| Current consumption | Parallel NPN open collector output: ≤ 100 mA (no load) SSI Line driver output: ≤ 150 mA (no load) |
| Insulation resistance | Between all terminals and case: ≥ 100 MΩ (500 VDC≐ megger) |
| Dielectric strength | Between all terminals and case: 750 VAC ~ 50 / 60 Hz for 1 minute |
| Vibration | 1 mm double amplitude at frequency 10 to 55 Hz (for 1 minute) in each X, Y, Z direction for 2 hours |
| Shock | ≤ 50 G |
| Ambient temp. | -10 to 70 °C, storage: -25 to 85 °C (no freezing or condensation) |
| Ambient humi. | 35 to 85%RH, storage: 35 to 90%RH (no freezing or condensation) |
| Protection rating | Axial cable type: IP64 (IEC standard), Radial cable type: IP50 (IEC standard) |
| Connection | Axial / Radial cable type model (cable gland) |
| Cable spec. | Ø 6 mm, 2 m, shield cable Parallel NPN open collector output: 17-wire × 2, SSI Line driver output: 10-wire |
| Wire spec. | AWG28 (0.08 mm), insulator diameter: Ø 0.8 mm Parallel NPN open collector output: 17-core, SSI Line driver output: 19-core |