

# Pressure Gauge for General Purpose

# **G15/G27 Series**

RoHS



G15-10-01

G27-10-R1

- Be sure to read the precautions on page 891 for selection and mounting.

## Standard Specifications

Model		G15	G27
<b>Type</b>		Back side thread	
<b>Port size</b> <sup>(1)</sup>		R 1/8: M5 (Female thread)	R 1/8
<b>Fluid</b> <sup>(2) (3)</sup>		Air	
<b>Indication precision</b> <sup>(4)</sup>		±5% F.S. (Full span)	
<b>Material</b>	<b>Case (Surface treatment)</b>	Zinc die-casted (Black graphite coated)	
	<b>Clear cover</b>	Polycarbonate	
	<b>Stud (Surface treatment)</b>	Zinc die-casted (Black graphite coated)	
	<b>Bourdon tube</b>	Brass	
<b>Weight (kg)</b>		0.01	0.015

• Caution on handling: When drain or oil, etc. gets into the gauge, it may result in a malfunction.

Note 1) When mounting a pressure gauge, use caution not to tighten excessively. Excessive tightening will cause product to be damaged. Use a pipe tape for sealing.

Note 2) Water cannot be used as an operating fluid. Because the clearance gap of the air passage of the Bourdon tube is very small. Water will block the gap and cause a malfunction.

Similarly, when using other fluids, please consult with SMC for fluid compatibility information concerning possible corrosion and response delay, etc.

Note 3) Avoid freezing as this may cause a malfunction.

Note 4) The guaranteed temperature range is 23°C ±5°C.

## Model (Standard)

Model	Pressure range <sup>(1)</sup>		Indication unit	Connection thread
	MPa			
G15-10-01	0 to 1.0		MPa	R 1/8, M5 (Female thread)
G27-10-R1	0 to 1.0		MPa	R 1/8

Note 1) Do not apply more excessive pressure than max. pressure display. It will be a cause of malfunction.

## Model (Made to Order)

Other versions of this unit can be made on a Made-to-Order basis.

Please consult with SMC for details, as delivery times may be extended.

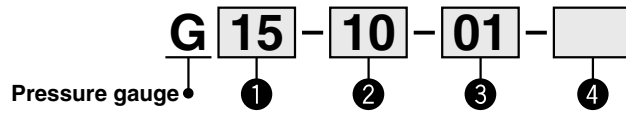
Model	Pressure range <sup>(1)</sup>		Indication unit	Connection thread
	MPa	psi		
G27-10-M5	0 to 1.0	—	MPa	M5 (Female thread)
G27-P10-R1-X30 <sup>(2)</sup>	0 to 1.0	0 to 150	MPa, psi	R 1/8

Note 1) Do not apply more excessive pressure than max. pressure display. It will be a cause of malfunction.

Note 2) Under the New Measurement Law, products for overseas use only (SI unit type for use in Japan)

# Pressure Gauge for General Purpose **G15/G27 Series**

## How to Order



	Symbol	Description	①	
			Size	
			G15	G27
+				
② Max. display pressure	<b>10</b> <sup>(1)</sup>	1.0 MPa	●	●
	<b>P10</b> <sup>(1), (2)</sup>	1.0 MPa, 150 psi	—	○ <sup>(3)</sup>
+				
③ Connection thread	<b>01</b>	R 1/8: M5 (Female thread)	●	—
		R 1/8	—	●
	<b>R1</b>	R 1/16	—	●
+				
④ Special specification <sup>Note 4)</sup>	<b>Nil</b>	—	●	●
	<b>X30</b>	Both MPa and psi	—	○ <sup>(3)</sup>

Note 1) Pressure other than 1.0 MPa is not available.

Note 2) This symbol must be used with Special specification "X30."

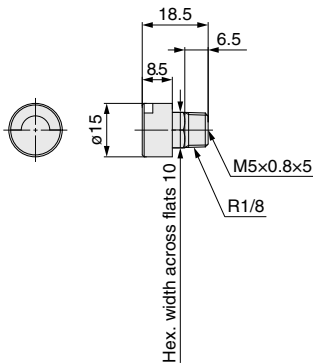
Note 3) Under the New Measurement Law, products for overseas use only (SI unit type for use in Japan)

Note 4) Wetted parts stainless steel specifications are not available.

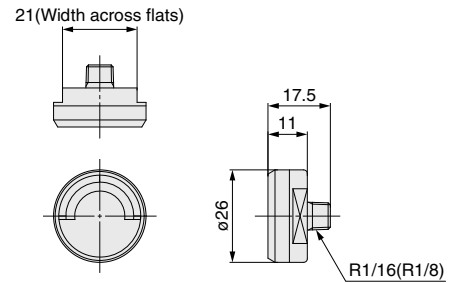
Note 5) Cover ring assembly is not available.

## Dimensions (Except Made-to-Order products)

**G15-10-01**



**G27-10-R<sup>1</sup><sub>01</sub>**



\* The dimensions in ( ): Connection thread R 1/8

