



G20

The reliable sensors in dusty environments and for applications with long sensing range

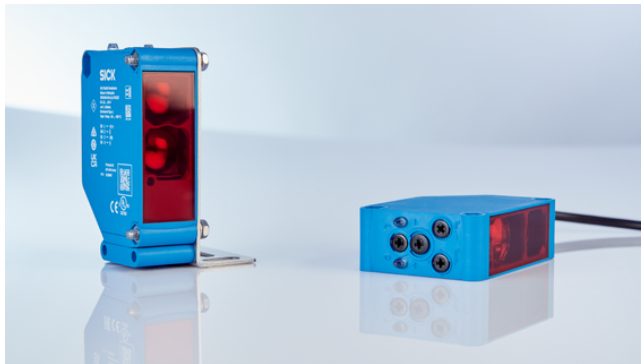
SICK
Sensor Intelligence.

Advantages



Extended range in a compact housing for DC and AC/DC applications

The G20 family of photoelectric sensors offers reliable object detection over extended distances. G20 sensors are compact, economical, and offer an outstanding price-performance ratio. Sensing range can be adjusted easily via sensitivity knob. In addition, they are fully installation compatible because DC and AC/DC devices are available in the same design and with various mechanical connections.



Extended range: compact and yet with the longest sensing range. G20 photoelectric sensors are used among other things in crane anticollision control tasks where long sensing ranges are required.



Flexibility: The G20 sensors are available with four different detection principles, three mechanical connection types as well three electrical options for DC or AC/DC, and with an optional adjustable signal delay. The comprehensive product family offers maximum flexibility with light/dark switching, sensitivity adjustment, and various mechanical mounting options. All variants of the G20 are mutually compatible with regard to mounting. Only one bracket is required.



Minimal effort with reliable object detection. The G20 family of photoelectric switches is characterized by high cost-effectiveness. This is due, among other things, to the attractive price/performance ratio, high level of flexibility and fast commissioning.



Made for dusty environments

Thanks to the high functional reserve, the G20 photoelectric sensors provide reliable operation, especially in dusty environments. This reduces plant downtime in the wood and steel industries, for example. The additional front LED and rotary switches make it easier to commission the system and check the functions. These stand-alone sensors can be used in a wide range of applications thanks to the light/dark changeover switch, adjustable sensitivity, and selectable signal delay as an option. Together with the superior price/performance ratio, this results in high cost-effectiveness.



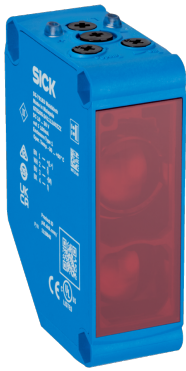
High functional reserve: dusty and dirty environments? No problem, thanks to their huge functional reserve, the G20 sensors continue to detect reliably and thus reduce plant downtime.



Front LED: An additional front LED provides information on the status of light reception, even when it is installed some distance away. Thanks to the BrightLight LED, the well visible red light also makes commissioning the sensor easier.



Simple commissioning and reliable sensor technology, even under challenging conditions. The G20 family of photoelectric sensors minimizes installation effort and plant downtime. Especially when dusty and dirty environments make detection difficult.



Technical data overview

Dimensions (W x H x D)	23.5 mm x 74.5 mm x 52.5 mm 23.5 mm x 74.5 mm x 63 mm
Functional principle detail	Background suppression Energetic With minimum distance to reflector (dual lens system) (depending on type)
Light source	LED
Type of light	Visible red light / Infrared light (depending on type)
Enclosure rating	IP67 / IP65 (depending on type)
Housing material	Plastic
Adjustment	Potentiometer

Product description

The G20 sensors enable reliable object detection over longer distances and are particularly well-suited for use in dusty environments thanks to the high operating reserve. They are compact, economical and offer an excellent price-performance ratio. The additional front LED and the rotary switches facilitate commissioning and operational checks. The light/dark switching, adjustable sensitivity and configurable signal delay make the photoelectric sensors flexible for use in numerous applications. They are also fully compatible with each other in terms of mounting, as DC and AC/DC devices are available in the same design and with different mechanical mounting options.

At a glance

- Additional front LED provides information on light reception status
- Large sensing range with high operating reserve
- M12 male connector, cable and connection chamber
- DC and AC/DC voltage supply
- Operating temperature range from -30 °C to +60 °C
- Optionally with time delay

Your benefits

- Reduced downtime thanks to high reliability and operating reserve, especially in dirty environments
- Reliable object detection over longer distances
- Excellent price/performance ratio thanks to proven technology
- Intuitive and fast commissioning thanks to light/dark switching, additional front LED and adjustable signal delay
- Compact design and availability for DC and AC/DC ensure compatibility when it comes to installation

Ordering information

Other models and accessories → www.sick.com/G20

- **Sensing range min. / max.:** 0.005 m / 3 m
- **Functional principle:** Photoelectric proximity sensor
- **Functional principle detail:** Background suppression
- **Switching mode:** Light/dark switching
- **Light source:** LED
- **Housing:** rectangular

Switching output	Type of light	Connection type	Type	Part no.
Relay, SPDT, electrically isolated	Infrared light	Cable with Q6 male connector, 6-pin, AC/UC-coded, 300 mm	GTB20M-3ASD116GZZZ	1120796
		Cable with Q7 male connector, 7-pin, AC/UC-coded, 300 mm	GTB20M-3CSD1160ZZZ	1120797
		Cable, 5-wire, 2 m	GTB20M-1IRC1160ZZZ	1120798
			GTB20M-1ISD1160ZZZ	1120799
		Cable, 5-wire, 5 m	GTB20M-6ISD1160ZZZ	1134322
		Terminal connection, 5 terminals	GTB20M-QLRC1160ZZZ	1119846
	Visible red light	Cable with Q6 male connector, 6-pin, AC/UC-coded, 300 mm	GTB20G-3ASD116GZZZ	1120792
		Cable with Q7 male connector, 7-pin, AC/UC-coded, 300 mm	GTB20G-3CSD1160ZZZ	1120794
		Cable, 5-wire, 2 m	GTB20G-1IRC1160ZZZ	1119842
			GTB20G-1IRC116GZZZ	1126448
			GTB20G-1ISD1160ZZZ	1120791
		Terminal connection, 5 terminals	GTB20G-QLRC1160ZZZ	1119871
			GTB20G-QLRC116GZZZ	1122945
Push-pull: PNP/NPN	Infrared light	Cable with M12 male connector, 4-pin, 315 mm	GTB20M-3411116GZZZ	1136809
		Cable, 4-wire, 2 m	GTB20M-1H111160ZZZ	1120795
		Male connector M12, 4-pin	GTB20M-24111160ZZZ	1119843
		Terminal connection, 4 terminals	GTB20M-QK111160ZZZ	1119844
	Visible red light	Cable, 4-wire, 2 m	GTB20G-1H111160ZZZ	1120789
		Male connector M12, 4-pin	GTB20G-24111160ZZZ	1119840
		Terminal connection, 4 terminals	GTB20G-QK111160ZZZ	1120790
Solid state relay	Infrared light	Cable, 5-wire, 2 m	GTB20M-1IM11160ZZZ	1120699

- **Sensing range min. / max.:** 0.02 m / 2 m
- **Functional principle:** Photoelectric proximity sensor
- **Functional principle detail:** Energetic
- **Switching mode:** Light/dark switching
- **Light source:** LED
- **Type of light:** visible red light
- **Housing:** rectangular

Switching output	Connection type	Type	Part no.
Relay, SPDT, electrically isolated	Cable, 5-wire, 2 m	GTE20G-1IRC1170ZZZ	1120835
		GTE20G-1IRC117GZZZ	1140255
	Terminal connection, 5 terminals	GTE20G-QLRC1170ZZZ	1120836
		GTE20G-QLRC117GZZZ	1140236
Push-pull: PNP/NPN	Cable, 4-wire, 2 m	GTE20G-1H111170ZZZ	1120834
	Male connector M12, 4-pin	GTE20G-24111170ZZZ	1119847
	Terminal connection, 4 terminals	GTE20G-QK111170ZZZ	1119849

- **Sensing range min. / max.:** 0.005 m / 3.5 m
- **Functional principle:** Photoelectric proximity sensor
- **Functional principle detail:** Energetic
- **Switching mode:** Light/dark switching
- **Light source:** LED
- **Type of light:** Infrared light
- **Housing:** rectangular

Switching output	Connection type	Type	Part no.
Relay, SPDT, electrically isolated	Cable, 5-wire, 2 m	GTE20M-1IRC1170ZZZ	1120839
	Terminal connection, 5 terminals	GTE20M-QLRC1170ZZZ	1120840
Push-pull: PNP/NPN	Cable, 4-wire, 2 m	GTE20M-1H111170ZZZ	1120837
	Male connector M12, 4-pin	GTE20M-24111170ZZZ	1119850
	Terminal connection, 4 terminals	GTE20M-QK111170ZZZ	1120838

- **Sensing range min. / max.:** 0.03 m / 20 m
- **Functional principle:** Photoelectric retro-reflective sensor
- **Functional principle detail:** With minimum distance to reflector (dual lens system)
- **Switching mode:** Light/dark switching
- **Light source:** LED
- **Type of light:** visible red light
- **Housing:** rectangular

Switching output	Connection type	Type	Part no.
Relay, SPDT, electrically isolated	Cable with Q6 male connector, 6-pin, AC/UC-coded, 300 mm	GLD20G-3ASD217GZZZ	1119875
	Cable with Q7 male connector, 7-pin, AC/UC-coded, 300 mm	GLD20G-3CSD217GZZZ	1120846
	Cable, 5-wire, 2 m	GLD20G-1IRC2170ZZZ	1119873
		GLD20G-1IRC217GZZZ	1138072
			1145725
		GLD20G-1ISD2170ZZZ	1120843
	Cable, 5-wire, 5 m	GLD20G-6IRC2170ZZZ	1119874
	Terminal connection, 5 terminals	GLD20G-QLRC2170ZZZ	1119876
		GLD20G-QLRC217GZZZ	1138030
Push-pull: PNP/NPN	Cable, 4-wire, 2 m	GLD20G-1H112170ZZZ	1119872
	Male connector M12, 4-pin	GLD20G-24112170ZZZ	1119870
	Terminal connection, 4 terminals	GLD20G-QK112170ZZZ	1120842

- **Sensing range min. / max.:** 0 m / 120 m
- **Functional principle:** Through-beam photoelectric sensor
- **Switching mode:** Light/dark switching
- **Light source:** LED
- **Housing:** rectangular

Switching output	Type of light	Connection type	Type	Part no.
Relay, SPDT, electrically isolated	Infrared light	Cable, 5-wire, 2 m	GSE20M-1IRC2170ZZZ	1120854
		Terminal connection, 5 terminals	GSE20M-QLRC2170ZZZ	1120855
	Visible red light	Cable with Q6 male connector, 6-pin, AC/UC-coded, 300 mm	GSE20G-3ASD217GZZZ	1120850
		Cable, 5-wire, 2 m	GSE20G-1IRC2170ZZZ	1120849
			GSE20G-1IRC217GZZZ	1139792
		Cable, 5-wire, 5 m	GSE20G-6IRC2170ZZZ	1119933
		Terminal connection, 5 terminals	GSE20G-QLRC2170ZZZ	1119878
	Infrared light	Cable, 4-wire, 2 m	GSE20M-1H112170ZZZ	1120851
		Male connector M12, 4-pin	GSE20M-24112170ZZZ	1119879
		Terminal connection, 4 terminals	GSE20M-QK112170ZZZ	1120852
Push-pull: PNP/NPN	Visible red light	Cable, 4-wire, 2 m	GSE20G-1H112170ZZZ	1120847
		Male connector M12, 4-pin	GSE20G-24112170ZZZ	1119877
		Terminal connection, 4 terminals	GSE20G-QK112170ZZZ	1120848

SICK AT A GLANCE

SICK is one of the leading manufacturers of intelligent sensors and sensor solutions for industrial applications. A unique range of products and services creates the perfect basis for controlling processes securely and efficiently, protecting individuals from accidents and preventing damage to the environment.

We have extensive experience in a wide range of industries and understand their processes and requirements. With intelligent sensors, we can deliver exactly what our customers need. In application centers in Europe, Asia and North America, system solutions are tested and optimized in accordance with customer specifications. All this makes us a reliable supplier and development partner.

Comprehensive services complete our offering: SICK LifeTime Services provide support throughout the machine life cycle and ensure safety and productivity.

For us, that is “Sensor Intelligence.”

WORLDWIDE PRESENCE:

Contacts and other locations –www.sick.com