



by HIVERO Co., Ltd.

HIVERO PILOT LAMP

Price: Please contact sales services for pricing

Domestic Sales: sales@hivero.co.kr

Overseas Sales: overseas@hivero.co.kr

Product Specifications

Product Name	Pilot Lamp
Shape	Flat
Hole Size	Φ25, Φ30
Color	Red, Green, Yellow, Blue, White
Certification	CE

PRODUCT INFORMATION



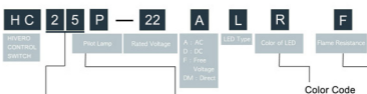
Features

- The switch system is operated by springs, so it can be used for the accurate opening and closing and it is available to use at low current as well.
- The contact part has a terminal protective cover, which is safe against electric shock.
- There are two types of mounting holes: Φ25, Φ30.
- The variety of buttons and cap colors give you a wider choice.

Details

Contact ratings		Resistance	Inductivity	
		250VAC, 5A	250VAC, 3A	
Performance	Rated Voltage	AC 220V, 380V, 440V ±10% 50/60Hz AC/DC 24V, 110V, ±10% 50/60Hz, DC24V ±10%		
	Max. operating cycles	Mechanical	60 cycles/min	
		Electrical	30 cycles/min	
	Insulation resistance		Min. 100MQ at DC 500V	
	Dielectric strength		AC 1,500V/1min(50-60Hz)	
	Vibration resistant		10 ~ 55Hz Amplitude 1.5mm	
	Shock withstand		30G(300m/s ²)	
	Life-time	Electrical	Above 100,000 times	
		Mechanical	Push button switch	Above 1,000,000 times
			Illuminated push buttons	Above 500,000
Selector switch	Above 500,000			
Ambient Temperature	Operation	-5 ~ +40°C		
	Storage	-15 ~ +50°C		
Vibration resistant		10 ~ 55Hz Amplitude 1.5mm		
LED	Rated voltage	DC 24V		
	Operational voltage	DC 24V ±5%		
	Rated current	20 mA		

Name Classification



Shape	Size	Rated Voltage	Illumination	Type
Flat	Φ25	AC/DC 24V	LED	HC25P-24FL
		AC/DC 110V	LED	HC25P-11FL
		AC 220V	LED	HC25P-22AL
		AC 380V AC 440V	LED	HC25P-34AL
		DC 24V (Direct Supply)	LED	HC25P-24DM

Color Code	
R	Red
G	Green
Y	Yellow
Bu	Blue
W	White

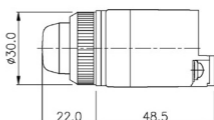
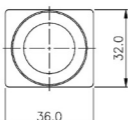
Body Material
No Mark : General



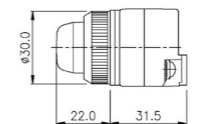
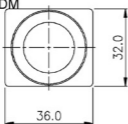
Automatic Reset

Dimensions

HC25P



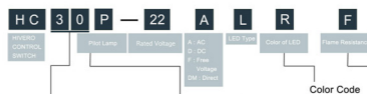
HC25P-24DM



Terminal Screw - M3.5 (Tightening Torque : Max. 0.8N.m)

Applied Surge Protection Circuit

Name Classification



Shape	Size	Rated Voltage	Illumination	Type
Flat	Φ30	AC/DC 24V	LED	HC30P-24FL
		AC/DC 110V	LED	HC30P-11FL
		AC 220V	LED	HC30P-22AL
		AC 380V AC 440V	LED	HC30P-34AL
		DC 24V (Direct Supply)	LED	HC30P-24DM

Color Code	
R	Red
G	Green
Y	Yellow
Bu	Blue
W	White

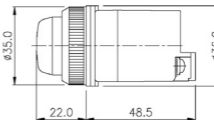
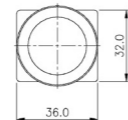
Body Material
No Mark : General



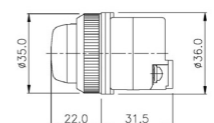
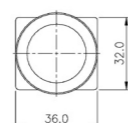
Automatic Reset

Dimensions

HC30P



HC30P-24DM



Terminal Screw - M3.5 (Tightening Torque : Max. 0.8N.m)

Applied Surge Protection Circuit