

# *Industrial Safety Equipment*

CATALOG NO. A36



# + FACESHIELDS



## B1 BROWGUARD

Description: Impact-resistant ABS browguard with ratchet headgear HG1.

Standard: **CE · ANSI · CSA**

Material: ABS

Color: Blue (B1BL), Yellow (B1YE)  
Green (B1GN), Orange (B1OR)

## D1 BROWGUARD

Description: Impact-resistant ABS browguard with ratchet headgear HG1.

Standard: **CE · ANSI**

Material: ABS

Color: Black (D1BK)



## FCR3 ALUMINIZED VISOR

Size: 8" x 15 1/2" x 1.0 mm

Standard: **ANSI · CE**

Material: PC, aluminized one side

- Description:
- Reflects up 80% of radiant heat.
  - Shade No. 2C-3(CE), R3(ANSI)
  - Meets high impact requirements of ANSI Z87+.
  - Ideal for use in steel mills, casting shops, heat treating operations and foundries.
  - Enhanced reflectance in the infrared (CE certified)

# + FACESHIELDS



SIZE: 8" x 15 1/2"

Model	Thickness	Material	Aluminum Bound	Standards	Color	Description
FC45	0.8 mm	PC	Yes	CE · CSA	Clear	For impact and splash resistance.
FC48	1.0 mm	PC	Yes	CE · ANSI · CSA	Clear	For impact, penetration, and splash resistance.
FC48T	1.5 mm	PC	Yes	CE · ANSI · CSA	Clear	For impact, penetration, heat, and splash resistance.
FC48AF	1.0 mm	CA	Yes	CE · ANSI	Clear	Anti-Fog (CE certified). For impact and splash resistance.
FC48HC	1.0 mm	PC	Yes	ANSI	Clear	Anti-scratch visor. For impact and splash resistance.
FC48G3	1.0 mm	PC	Yes	CE · ANSI	Green	UV filter, shade No. 2-3, U3. For UV and impact resistance.
FC48G5	1.0 mm	PC	Yes	CE · ANSI	Green	UV filter, shade No. 2-5, U5. For UV and impact resistance.
FC49	-	Steel Mesh	Yes	CE · ANSI	Black	For flying chips and splinters.
FC49M	-	Steel Mesh	No	CE · ANSI	Black	For flying chips and splinters.
FC45N	0.8 mm	PC	No	CE · CSA	Clear	For impact and splash resistance.
FC48N	1.0 mm	PC	No	CE · ANSI · CSA	Clear	For impact, penetration, and splash resistance.
FC48G3N	1.0 mm	PC	No	CE · ANSI	Green	UV filter, shade No. 2-3, U3. For UV and impact resistance.
FC48G5N	1.0 mm	PC	No	CE · ANSI	Green	UV filter, shade No. 2-5, U5. For UV and impact resistance.

SIZE: 8" x 12"

Model	Thickness	Material	Aluminum Bound	Standards	Color	Description
FC25	0.8 mm	PC	Yes	CE · CSA	Clear	For impact and splash resistance.
FC28	1.0 mm	PC	Yes	CE · ANSI · CSA	Clear	For impact, penetration, and splash resistance.
FC28T	1.5 mm	PC	Yes	CE · ANSI · CSA	Clear	For impact, penetration, heat, and splash resistance.
FC28AF	1.0 mm	CA	Yes	CE · ANSI	Clear	Anti-Fog (CE certified). For impact and splash resistance.
FC28G3	1.0 mm	PC	Yes	ANSI	Green	UV filter, shade No. U3. For UV and impact resistance.
FC28G5	1.0 mm	PC	Yes	ANSI	Green	UV filter, shade No. U5. For UV and impact resistance.
FC29	-	Steel Mesh	Yes	CE · ANSI	Black	For flying chips and splinters.
FC29M	-	Steel Mesh	No	CE · ANSI	Black	For flying chips and splinters.
FC25N	0.8 mm	PC	No	CE · CSA	Clear	For impact and splash resistance.
FC28N	1.0 mm	PC	No	CE · ANSI · CSA	Clear	For impact, penetration, and splash resistance.
FC28G3N	1.0 mm	PC	No	ANSI	Green	UV filter, shade No. U3. For UV and impact resistance.
FC28G5N	1.0 mm	PC	No	ANSI	Green	UV filter, shade No. U5. For UV and impact resistance.

## + FACESHIELDS



### FC73 FACESHIELD VISOR

Size: 7" x 15½" x 1.0 mm

Standard: **CE · ANSI · CSA**

Material: PC

Color: Clear

Description: Used with B1 browguards and C3 chin guards.

### FC83 FACESHIELD VISOR

Size: 8" x 15½" x 1.0 mm

Standard: **CE · ANSI · CSA**

Material: PC

Color: Clear

Description: Used with B1 browguards and C3 chin guards.

### C3 CHINGUARD

Standard: **CE · ANSI · CSA**

Material: Impact-resistant ABS

Color: Blue (C3BL), Yellow (C3YE), Green (C3GN), Orange (C3OR)

Description: Used with FC73 or FC83 visors. Providing chin protection.



ET2YE



T48



T48N

### ET2 BROWGUARD

Description: Impact-resistant ABS browguard with ratchet headgear HG2.

Standard: **CE · ANSI**

Material: ABS

Color: Yellow(ET2YE)

### T48 FACESHIELD VISOR

Size: 8" x 15½" x 1.0 mm

Standard: **CE · ANSI**

Material: PC

Color: Clear

Description: Aluminum bound.  
For impact and splash resistance.

### T48N FACESHIELD VISOR

Size: 8" x 15½" x 1.0 mm

Standard: **CE · ANSI**

Material: PC

Color: Clear

Description: For impact and splash resistance.

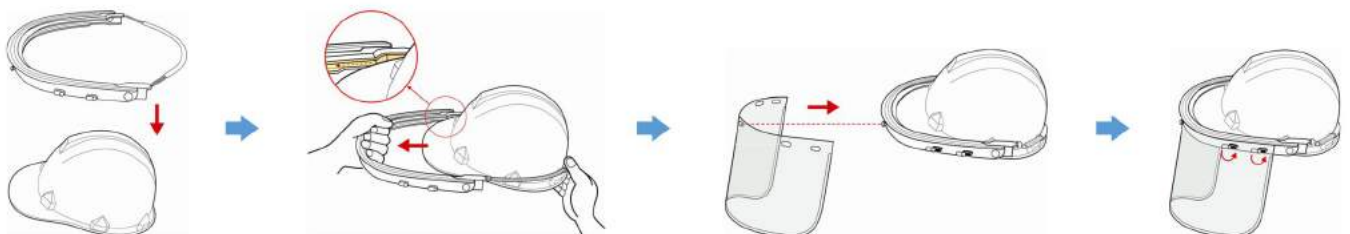
## + BRACKETS



- Designed to fit most regular safety caps.
- Providing head and face protection together.
- Fitting all "FC" series visors.



Model	Material	Standards	Color	Description
A2	ABS	CE · ANSI	Black	Fitting in with regular safety caps.
A3	ABS/Aluminum	CE · ANSI	Black	Fitting in with regular safety caps.
A4	Aluminum	CE · ANSI	Black	Fitting in with regular safety caps.
AR4	Aluminum	-	Silver	Fitting in with round-brim safety caps.



## + FACESHIELDS



K4BL



K4YE



K4GN



K4OR



K3BL



K3YE



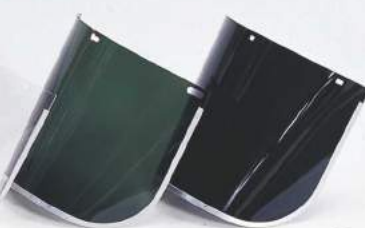
K3GN



K3OR



K25



K28G3



K25N



K28G5N



K28



K28G5



K28N



K28G3N



### K4 BROWGUARD

Description: Impact-resistant ABS browguard with headgear HG4.

Standard: **CE · ANSI · CSA**

Material: ABS

Color: Blue (K4BL), Yellow (K4YE)  
Green (K4GN), Orange (K4OR)

### K3 BROWGUARD

Description: Impact-resistant ABS browguard with ratchet headgear HG3.

Standard: **CE · ANSI · CSA**

Material: ABS

Color: Blue (K3BL), Yellow (K3YE)  
Green (K3GN), Orange (K3OR)

SIZE: 8"x 12"

Model	Thickness	Material	Aluminum Bound	Standards	Color	Description
K25	0.8 mm	PC	Yes	<b>CE · CSA</b>	Clear	For impact resistance.
K28	1.0 mm	PC	Yes	<b>CE · ANSI · CSA</b>	Clear	For impact and penetration resistance.
K28G3	1.0 mm	PC	Yes	<b>ANSI</b>	Green	UV filter, shade No. U3. For UV and impact resistance.
K28G5	1.0 mm	PC	Yes	<b>ANSI</b>	Green	UV filter, shade No. U5. For UV and impact resistance.
K25N	0.8 mm	PC	No	<b>CE · CSA</b>	Clear	For impact resistance.
K28N	1.0 mm	PC	No	<b>CE · ANSI · CSA</b>	Clear	For impact and penetration resistance.
K28G3N	1.0 mm	PC	No	<b>ANSI</b>	Green	UV filter, shade No. U3. For UV and impact resistance.
K28G5N	1.0 mm	PC	No	<b>ANSI</b>	Green	UV filter, shade No. U5. For UV and impact resistance.

# + HEADGEARS



HG1



HG2



HG3



HG4



HG1



HG2



HG3



HG4

## HG1 HEADGEAR \*CE \*ANSI \*CSA

Ratchet adjustment, for welding helmets or browguards.

## HG2 HEADGEAR \*CE \*ANSI

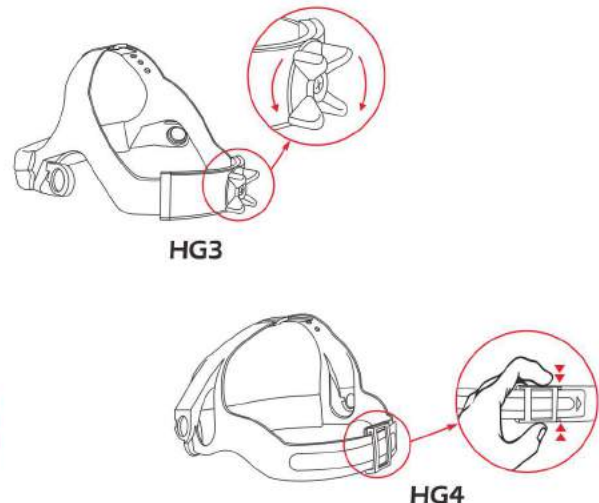
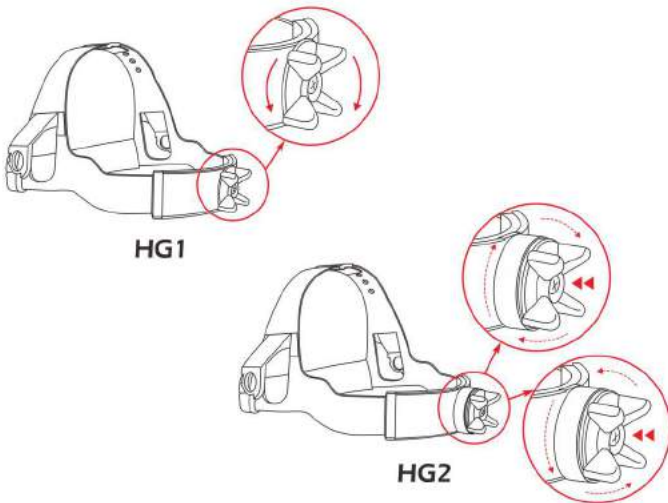
Push-and-turn ratchet adjustment, for welding helmets or browguards.

## HG3 HEADGEAR \*CE \*CSA

Ratchet adjustment, for welding helmets or browguards.

## HG4 HEADGEAR \*CE \*ANSI \*CSA

Easy manual adjustment, for welding helmets or browguards.



## + WELDING HELMETS



AW7R



AW7R-11



(LENS NOT INCLUDED)

Model	Material	Standards	Lens Size	Description
633P	PP	CE · ANSI · CSA	4 1/4"x2" (108 x 51 mm)	Lift-front lens holder.
633N	Nylon	ANSI	4 1/4"x2" (108 x 51 mm)	Lift-front lens holder.
635P	PP	ANSI	4 1/4"x2" (108 x 51 mm)	Fixed lens holder.
567P	PP	-	4 1/4"x2" (108 x 51 mm)	Handshield.
632P	PP	ANSI	4 1/4"x2" (108 x 51 mm)	Handshield.
632N	Nylon	ANSI	4 1/4"x2" (108 x 51 mm)	Handshield.
632F	FRTTP	ANSI	4 1/4"x2" (108 x 51 mm)	Handshield.
6PA2	PP	CE · ANSI	4 1/4"x2" (108 x 51 mm)	Lift-front lens holder, with ABS bracket.
6PA3	PP	ANSI	4 1/4"x2" (108 x 51 mm)	Lift-front lens holder, with semi-aluminum bracket.
DA11	PP	CE · ANSI · CSA	4 1/4"x2" (108 x 51 mm)	Fixed lens holder.
DA11L	PP	CE · ANSI · CSA	4 1/4"x2" (108 x 51 mm)	Lift-front lens holder.

AW7R

PP

CE · ANSI · CSA

94x43mm

Auto-Darkening welding helmet.

- > Built-in rechargeable lithium battery.
- > USB fast charging.
- > 4 arc light sensors.
- > Light state:4
- > Dark states:5,7,8,9,10,11,12



## + WELDING HELMETS



(LENS NOT INCLUDED)

Model	Material	Standards	Lens Size	Description
637P	PP	-	4 1/4" x 3 1/4"	Handshield.
638P	PP	CE	4 1/4" x 3 1/4"	Fixed lens holder.
733P	PP	CE	110 mm x 90 mm	Lift-front lens holder.
934P	PP	ANSI · CSA	5 1/4" x 4 1/2"	Fixed lens holder.
936P	PP	ANSI · CSA	5 1/4" x 4 1/2"	Lift-front lens holder.

## + FIRE BLANKET/WELDING BLANKETS



### ATG1515 FIRE BLANKET

Description: This ATG1515 fire blanket offers help putting out dangerous fires within the home, workplace, car, or boat.

Size: 150 x 150 cm

Thickness: 0.48 mm

Temperature tolerance: 537°C

Abrasion resistance: Good

### HTX600/HTX1000 WELDING BLANKETS

Description: These HTX600/HTX1000 welding blankets provide excellent protection from sparks, spatter and slag generated by welding or metal-cutting application.

Size: 89 x 150 cm

Thickness: HTX600: 0.71 mm HTX1000: 1.22 mm

Temperature tolerance: 1649°C

Abrasion resistance: Excellent

## + GOGGLES



Model	Thickness	Material	Standards	Color	Description
SG102	1.0 mm	PC	CE - ANSI	Clear	For impact and dust. Direct venting.
SG104	1.0 mm	PC	CE - ANSI	Clear	For impact and dust. Indirect venting.
SG105	1.0 mm	CA	CE - ANSI	Clear	Anti-Fog (CE certified). For impact and dust. Indirect venting.
SG152	1.5 mm	PC	CE - ANSI	Clear	For impact and dust. Direct venting.
SG154	1.5 mm	PC	CE - ANSI	Clear	For impact and dust. Indirect venting.
SG155	1.5 mm	PC	ANSI	Clear	Anti-Fog. For impact and dust. Indirect venting.
NP102	1.0 mm	PC	CE - ANSI	Clear	For impact and dust. Direct venting.
NP152	1.5 mm	PC	CE - ANSI	Clear	For impact and dust. Direct venting.
NP104	1.0 mm	PC	CE - ANSI	Clear	For impact and dust. Indirect venting.
NP154	1.5 mm	PC	CE - ANSI	Clear	For impact and dust. Indirect venting.
NP103	1.0 mm	CA	CE - ANSI	Clear	Anti-Fog (CE certified) For impact and dust. Direct venting.
NP105	1.0 mm	CA	CE - ANSI	Clear	Anti-Fog (CE certified) For impact and dust. Indirect venting.
NP1063	1.0 mm	PC	ANSI	Green	UV filter, shade No. U3. For impact and dust. Indirect venting.
NP1065	1.0 mm	PC	ANSI	Green	UV filter, shade No. U5. For impact and dust. Indirect venting.
GW250	-	PC/GLASS	CE - ANSI	Green	Lift-front type lens holder, used for both of welding and chipping operations. Lift-front Lens Holder: Clear PC Cover Lens + Welding Glass Shade #5 Inner Frame: Clear PC Lens
GW240	-	PC/GLASS	CE - ANSI	Green	Impact-resistant ABS eyecups, used in gas welding, cutting and brazing. Clear PC Cover Lens + Welding Glass Shade #5
NP248	-	PC/GLASS	CE - ANSI	Green	Designed to fit general hard caps, can be lift up. Clear PC Cover Lens + Welding Glass Shade #5

## + EARPLUGS/EARMUFFS



Model	Standards	Color	Description
NP35	CE	White	NP351: with plastic case. NP352: with case and key chain. NP353: with case, key chain, and neck string. NP354: with case and neck string. NP35K: with neck string, packed in a polybag
	ANSI		
NP36	CE	Blue	NP363: with case, key chain, and neck string. NP364: with case and neck string. NP36K: with neck string, packed in a polybag
	ANSI		
NP32	-	White	NP32K: with neck string, packed in a polybag NP32M: without neck string, packed in a polybag
EP5C	CE	Orange	With neck string.
EP5	CE	Orange	Without neck string.
EM92BK	-	Black	Very comfortable to wear, foam ear cushion, foam head cushion, suitable for continuous use over long periods. It can be worn in 3 positions - overhead, behind neck or under chin.
EM92RD	ANSI	Red	
EM92BL	-	Blue	
EM62	ANSI	Yellow	Light in weight. It can be worn in 3 positions - overhead, behind neck or under chin.
EM65	ANSI	Yellow	Light in weight. The headband can be folded. It can be worn in 3 positions - overhead, behind neck or under chin.
EM66	-	Orange	Impact-resistant ABS ear cup, the headband can be folded. It can be worn in 3 positions.
EM68	ANSI	Blue	Impact-resistant ABS ear cup, non-magnetic, adjustable headband. It can be worn in 3 positions.

## + RESPIRATORS/FILTERS



### CHEMICAL RESPIRATORS (FILTER NOT INCLUDED)

**NP305** Single cartridge, twin exhalation valves. **NP306** Twin cartridges, twin exhalation valves.

### FILTERS (USED WITH NP305, NP306)

**RC201** For dust. **RC202** For organic vapours, mists and fumes of low toxicity.  
**RC203** For spray painting and organic vapours of low toxicity. **RC205** For acid gases of low toxicity.  
**RC206** For organic, inorganic vapours and acid gases of low toxicity. **RC209** For agricultural sprays.  
**PF5** Prefilter.

### CHEMICAL RESPIRATORS (FILTER NOT INCLUDED)

**NP307** Single cartridge, twin exhalation valves. **NP308** Twin cartridges, twin exhalation valves.

### FILTERS (USED WITH NP307, NP308)

**RC1** For dust. **RC2** For organic vapours, mists and fumes of low toxicity.  
**RC3** For spray painting and organic vapours of low toxicity. **RC5** For acid gases of low toxicity.  
**RC6** For organic, inorganic vapours and acid gases of low toxicity. **RC9** For agricultural sprays.  
**PF7** Prefilter.

### DUST RESPIRATORS (FILTER INCLUDED)

**NP303** Single cartridge, twin exhalation valves. **NP304** Twin cartridges, twin exhalation valves.

**RC101** DUST FILTER. For NP303, NP304 respirators ONLY.

### DUST MASKS

**NP22** DUST MASK. **NP22A** ACTIVATED CARBON DUST MASK.  
**PF2** DUST FILTER. Used with NP22. **PF3A** ACTIVATED CARBON DUST FILTER. Used with NP22A.

## + DISPOSABLE FACE MASKS



NP12K

### NP12K ACTIVATED CARBON FACE MASK

Description: • Low breathing resistance.

- Outer layer: water resistance.
- Activated carbon layer: odor absorbing.
- Meltblown layer: particles filtering.
- Inner layer: sweat absorbing.
- Twin wire adjustable nosepiece ensures custom shape.
- 99 % Bacterial Filtration Efficiency.

Package: • Wrapped and sealed in plastic bags.

- 1PC/BAG ; 50 PCS/BOX



NP12

### NP12 ACTIVATED CARBON FACE MASK

Description: • Low breathing resistance.

- Outer layer: water resistance.
- Activated carbon layer: odor absorbing.
- Meltblown layer: particles filtering.
- Inner layer: sweat absorbing.
- Twin wire adjustable nosepiece ensures custom shape.
- 99 % Bacterial Filtration Efficiency.

Package: • Wrapped and sealed in plastic bags.

- 5 PCS/BAG ; 50 PCS/BOX



NP13

### NP13 DUST FACE MASK

Description: • Low breathing resistance.

- Outer layer: water resistance.
- Meltblown layer: particles filtering.
- Inner layer: sweat absorbing.
- Twin wire adjustable nosepiece ensures custom shape.
- 99 % Bacterial Filtration Efficiency.

Package: • Wrapped and sealed in plastic bags.

- 5 PCS/BAG ; 50 PCS/BOX



## + EMERGENCY EYE-WASH



**EW402**



**EW6**



**EW407**



**EW607**

### **EW402 EMERGENCY EYE-WASH** (Wall mounted Type)

Material of Basin : Stainless steel.  
Diameter of Basin : 30cm.  
Sprayheads with protective covers.

### **EW407 EMERGENCY EYE-WASH** (Pedestal mounted Type)

Material of Basin : Stainless steel.  
Diameter of Basin : 30cm.  
Sprayheads with protective covers.  
Diameter of Floor Flange : 25cm (Stainless steel)

### **EW607 EMERGENCY EYE-WASH AND DRENCH SHOWER**

Material of Basin : Stainless steel.  
Diameter of Basin : 30cm.  
Sprayheads with protective covers.  
Diameter of Floor Flange : 25cm (Stainless steel)  
Copper alloy shower head.

### **EW6 EMERGENCY EYEWASH BOTTLE**

Keep filled with sterile water.  
Size : 21 cm (H) x 7 cm (W)

## + HOODS



NP312



NP901



NP375



NP503



NP505

### NP312 CHEMICAL HOOD

The assembly consists of a twin-cartridge respirator and a light weight hood. Designed to protect head, face, eyes and lungs against dust, paint, solvent, etc.

### NP901 ARC-WELDING LEATHER HOOD

Lift-front lens holder. Used in narrow working areas for arc-welding operation.

### NP503 AIR-SUPPLIED SANDBLAST HOOD

Designed for all sandblasting operations.  
Air regulator provides smooth and low noise air flow.

### NP505 AIR-SUPPLIED SPRAY PAINTING HOOD

Light in weight, replaceable visor.  
Air regulator provides smooth and low noise air flow.

### NP375 AIR-SUPPLIED MASK

The assembly consists of a half-mask, waist belt, air regulator and quick connector. The air diffuser under the chin balances the air flow in the mask.

## + ALUMINIZED GLOVES

### FINGER

In the test of burning behavior, it shows the highest performance level 4.

### BACK OF THE HAND

Aluminized outside provides protections against radiant heat and small splashes of molten metal.

### PALM AREA

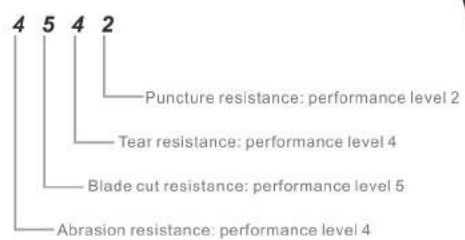
Woven fabric of an Aramid fibre blend over fibreglass core yarn, which provides protections against contact heat and mechanical risks (Abrasion resistance: highest performance level 4. Blade cut resistance: highest performance level 5. Tear resistance: highest performance level 4)

CE

#### EN 407-Protective gloves against thermal risks(heat and fire)



#### EN 388-Protective gloves against mechanical risks



### AL145 ALUMINIZED GLOVE

Length: 14"

Size: 11

Standard: CE · EN 407 · EN 388

Description: Provide protection against radiant heat and molten metal splash. Ideal for use in steel mills, casting shops, heat treating operations and foundries.

### AL165 ALUMINIZED GLOVE

Length: 16"

Size: 11

Standard: CE · EN 407 · EN 388

Description: Provide protection against radiant heat and molten metal splash. Ideal for use in steel mills, casting shops, heat treating operations and foundries.



## + ALUMINIZED CLOTHES

Description: Provide protection against radiant heat and molten metal splash. Ideal for use in steel mills, casting shops, heat treating operations and foundries.



AL1



AL2



AL3



AL4



AL6



AL7



AL8



AL5

RADIANT HEAT RESISTANCE	$T_{24} > 95$ s According to European standard EN 11612, heat transfer $t_{24}$ means the time (in seconds) to achieve a temperature rise of 24°C, under heat flux density 20 kW/m <sup>2</sup> .	Performance Level	$T_{24}$ (s)
		C1 (Lowest)	7~20
		C2	20~50
		C3	50~95
		C4 (Highest)	≥ 95

### AL1 ALUMINIZED HOOD

Used in industrial radiant heat situations.

### AL2 ALUMINIZED COAT

Chest circle: 48", coat length: 29"

### AL3 ALUMINIZED TROUSERS

Waist circle: 34", trouser length: 39"

### AL4 ALUMINIZED BOOTS

Steel toe, boots height: 8"

### AL5 ALUMINIZED GAITERS

### AL6 ALUMINIZED APRON WITH SLEEVES

Chest width: 27"  
Apron length: 49"

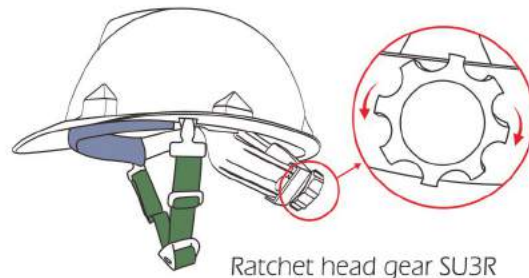
### AL7 ALUMINIZED APRON

Width: 27", length: 39"

### AL8 ALUMINIZED SLEEVES

Length: 22"

## + SAFETY CAPS



### M1 CHIN STRAP \*CE \*ANSI Z89

Standard chin strap.

### M2 CAP SUSPENSION \*CE

Pin-lock, 6-point polyethylene suspension.

### HC31 SAFETY CAP (CHINSTRAP INCLUDED) \*CE

**HDPE SHELL**, with suspension **M2**.

Electrical Insulation 440V a.c.

Color : Red (HC31RD), Orange (HC31OR), Blue (HC31BL),  
White (HC31WH), Yellow (HC31YE), Green (HC31GN).

### HC35 SAFETY CAP (CHINSTRAP INCLUDED) \*CE

**HDPE SHELL**, with suspension **M3**.

Electrical Insulation 440V a.c.

Color : Red (HC35RD), Orange (HC35OR), Blue (HC35BL),  
White (HC35WH), Yellow (HC35YE), Green (HC35GN).

### HR35 SAFETY CAP (CHINSTRAP INCLUDED) \*CE

**HDPE SHELL**, with suspension **SU3R**.

Electrical Insulation 440V a.c.

Color : Red (HR35RD), Orange (HR35OR), Blue (HR35BL),  
White (HR35WH), Yellow (HR35YE), Green (HR35GN).

### M3 CAP SUSPENSION \*CE

Pin-lock, 6-point nylon suspension.

### SU3R CAP SUSPENSION \*CE

Ratchet, 6-point nylon suspension.

### HC32 SAFETY CAP (CHINSTRAP INCLUDED) \*CE

**ABS SHELL**, with suspension **M2**.

Electrical Insulation 440V a.c.

Color : Red (HC32RD), Orange (HC32OR), Blue (HC32BL),  
White (HC32WH), Yellow (HC32YE), Green (HC32GN).

### HC36 SAFETY CAP (CHINSTRAP INCLUDED) \*CE

**ABS SHELL**, with suspension **M3**.

Electrical Insulation 440V a.c.

Color : Red (HC36RD), Orange (HC36OR), Blue (HC36BL),  
White (HC36WH), Yellow (HC36YE), Green (HC36GN).

### HR36 SAFETY CAP (CHINSTRAP INCLUDED) \*CE

**ABS SHELL**, with suspension **SU3R**.

Electrical Insulation 440V a.c.

Color : Red (HR36RD), Orange (HR36OR), Blue (HR36BL),  
White (HR36WH), Yellow (HR36YE), Green (HR36GN).

## + SAFETY CAPS



### M1 CHIN STRAP \*CE \*ANSI Z89

Safety chin strap.

### SU8 CAP SUSPENSION

Pin-lock, 8-point nylon suspension.

### HC81 SAFETY CAP (CHINSTRAP INCLUDED)

HDPE SHELL, with suspension **SU8**.

Color : Red (HC81RD), Orange(HC81OR), Blue (HC81BL),  
White (HC81WH), Yellow (HC81YE), Green (HC81GN).

### HR81 SAFETY CAP (CHINSTRAP INCLUDED)

HDPE SHELL, with ratchet suspension **SU8R**.

Color : Red (HR81RD), Orange(HR81OR), Blue (HR81BL),  
White (HR81WH), Yellow (HR81YE), Green (HR81GN).

### SU8R CAP SUSPENSION \*ANSI Z89

Ratchet, 8-point nylon suspension.

### HC82 SAFETY CAP (CHINSTRAP INCLUDED)

ABS SHELL, with suspension **SU8**.

Color : Red (HC82RD), Orange(HC82OR), Blue (HC82BL),  
White (HC82WH), Yellow (HC82YE), Green (HC82GN).

### HR82 SAFETY CAP(CHINSTRAP INCLUDED) \*ANSI Z89

ABS SHELL, with ratchet suspension **SU8R**.

Color : Red (HR82RD), Orange(HR82OR), Blue (HR82BL),  
White (HR82WH), Yellow (HR82YE), Green (HR82GN).

## + BUMP CAPS



BP65GN



BP65BL



BP65OR



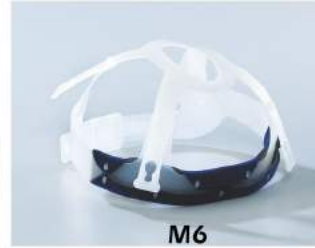
BP65RD



BP65WH



BP65YE



M6



M1

**M1 CHIN STRAP** \*CE \*ANSI Z89

**M6 CAP SUSPENSION** \*CE

Pin-lock, 4-point polyethylene suspension.

**BP65 BUMP CAP** (CHINSTRAP NOT INCLUDED) \*CE

HDPE SHELL, with suspension M6.

Color : Red (BP65RD), Orange (BP65OR), Blue (BP65BL),

White (BP65WH), Yellow (BP65YE), Green (BP65GN)

## + FULL-FACE RESPIRATOR

**Spascan**

Made in Italy



TR2002



200A2



100K2



202ABEK2



ABEK2-P3

**TR2002 FULL-FACE RESPIRATOR** \*CE

(CANISTER NOT INCLUDED)

Full face Respirator with polycarbonate wide vision Visor.

**200A2 A2 CANISTER** \*CE

For use against organic gases and vapours with boiling point > 65°C.

**100K2 K2 CANISTER** \*CE

For use against ammonia and organic ammonia derivatives.

**202ABEK2 A2 B2 E2 K2 CANISTER** \*CE

Combined filter for use against organic vapours with boiling point > 65°C and inorganic gases and vapours, acid gases, Sulphur Dioxide (SO<sub>2</sub>), Ammonia(NH<sub>3</sub>) and its organic derivatives, dusts, fumes and mists.

**ABEK2-P3 A2 B2 E2 K2 & P3 CANISTER** \*CE

Combined filter for use against organic vapours with boiling point > 65°C and inorganic gases and vapours, acid gases, Sulphur Dioxide (SO<sub>2</sub>), Ammonia(NH<sub>3</sub>) and its organic derivatives, dusts, fumes and mists. It also provides Class 3 particle filtration.

## + SAFETY HARNESS

Belt : 50 mm



NP787

Belt : 60 mm



NP739

Belt : 45 mm



KA91

Belt : 45 mm



KA91H

### NP787 PARACHUTE TYPE SAFETY HARNESS

Two D-Rings, 3-point adjustable mating buckles.  
Belt: 50 mm  
Rope: 14 mm  $\phi$  x 1500 mm

### NP739 LINEMEN'S SAFETY BELT

Belt: 60 mm  
Rope: 14 mm  $\phi$  x 1500 mm

### KA91 FULL BODY HARNESS \*CE

One DOUBLE-LOCK hook, one D-ring.  
Belt: 45 mm  
Rope: 14 mm  $\phi$  x 1500 mm

### KA91H FULL BODY HARNESS \*CE

One large DOUBLE-LOCK hook, one D-ring.  
Belt: 45 mm  
Rope: 14 mm  $\phi$  x 1500 mm

## + SAFETY BELTS



### NP737 SAFETY BELT

One forged DOUBLE-LOCK hook, two D-rings, one buckle.  
Belt: 60 mm x 1200 mm  
Rope: 14 mm  $\phi$  x 1500 mm

### NP737A SAFETY BELT

One forged DOUBLE-LOCK hook, one D-ring, one buckle.  
Belt: 60 mm x 1200 mm  
Rope: 14 mm  $\phi$  x 1500 mm

### NP727 SAFETY BELT

One DOUBLE-LOCK hook, one D-ring, one buckle.  
Belt: 50 mm x 1200 mm  
Rope: 14 mm  $\phi$  x 1500 mm

### NP727D SAFETY BELT

One DOUBLE-LOCK hook, two D-rings, one buckle.  
Belt: 50 mm x 1200 mm  
Rope: 14 mm  $\phi$  x 1500 mm

## + SAFETY BELTS



### NP747 LINEMEN'S SAFETY BELT

One adjustable fall arrestor, one DOUBLE-LOCK hook, two D-rings, one buckle.  
Main belt width: 50 mm. Pad belt width: 80 mm.  
Rope: 16 mm  $\phi$

### NP757 SAFETY BELT

Safety hook opening: 2"  
Belt: 50 mm x 1200 mm  
Rope: 14 mm  $\phi$  x 1500 mm

### NP758 SAFETY BELT

Safety hook opening: 2"  
Belt: 60mm x 1200mm  
Rope: 14mm  $\phi$  x 1500mm

