

LY 릴레이소켓 LY Relay Socket

형상 및 외형치수 / Shape and Dimensions

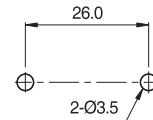
형상 Shape	도면 Dimensions	회로도 Circuit diagrams
HLY2S 		
HLY4S 		

특성 및 연결단자 / Characteristics and Connection terminal sizes

형식 Type	HLY2S	HL4S	
정격절연전압 Rated insulation voltage	AC250V		
정격전류 Rated current	AC250V 10A		
절연저항 Insulation resistance	100MΩ 이상 (DC500V절연저항계)		
내전압 Withstand voltage	AC 2000V 50/60Hz 1min		
단자나사 Terminal screw size	M3*9		
연결단자 Connection terminal / mm	E	4.5	
	F	3.6	
	W	Max 6.8	
	L	Min 15.7	

취부홀
Mounting hole

HLY2S



HLY4S

