

# Ø 22/25 mm Pilot Lights



## L2RR Series CATALOG

For your safety, read and follow the considerations written in the instruction manual, other manuals and Autonics website.

The specifications, dimensions, etc. are subject to change without notice for product improvement. Some Models may be discontinued without notice.

### Features

- High luminance LED
- Available in various colors
- Long-lasting durability

### Specifications

Series	L2RR Series
Installation	Extended
Shock	300 m/s <sup>2</sup> (≈ 30 G) in each X, Y, Z direction for 3 times
Shock (malfunction)	100 m/s <sup>2</sup> (≈ 10 G) in each X, Y, Z direction for 3 times
Vibration	1.5 mm amplitude at frequency of 10 to 55 Hz (for 1 min) in each X, Y, Z direction for 2 hours
Vibration (malfunction)	1.5 mm amplitude at frequency of 10 to 55 Hz (for 1 min) in each X, Y, Z direction for 10 minutes
Ambient temperature	-15 to 55 °C, storage: -25 to 65 °C (no freezing or condensation)
Ambient humidity	35 to 85 %RH, storage: 35 to 85 %RH (no freezing or condensation)
Protection structure	Light unit: IP52 (IEC standard)
Approval	CE, ENEC, ENEC, ENEC
Light unit weight	≈ 15.5 g
Housing weight	≈ 7 g

LED blocks	
Rated voltage	AC/DC voltage type: 12-24 VAC~ 50/60 Hz, 12-24 VDC=
	AC voltage type: 110-220 VAC~ 50/60 Hz
Current consumption	≤ 20 mA
Approval	CE, ENEC, ENEC
Weight	AC/DC voltage type: ≈ 11 g, AC voltage type: ≈ 12 g

### Sold Separately

- LED blocks (SA□-L□□□□)
- Locking handle (SA□-LH)
- Switch washer (SA-SW□)

## Ordering Information

This is only for reference. For selecting the specified Model, follow the Autonics website.

Model is based on light unit+block combination. Light units or blocks are sold separately. In case of block, refer to control switch accessories.

<b>L2RR</b>	<b>①</b>	-	<b>L</b>	<b>②</b>	<b>③</b>	<b>④</b>	<b>⑤</b>
Light unit						Block	

### ① Letter marking (flat round /square) ④ LED block

No mark: Lamp (light unit + singular type block)  
D: 1 AC/DC voltage type  
L: 1 AC voltage type

No mark: None (light unit + modular type block)

U: None (light unit) <sup>01)</sup>

### ② Head type

- 1: Extended dome
- 2: Extended horn
- 3: Extended flat round
- 4: Extended flat square

### ⑤ Block

- No mark: Singular type
- M: Modular type

### ③ Head color

- R: Red
- B: Blue
- G: Green
- Y: Yellow
- W: White

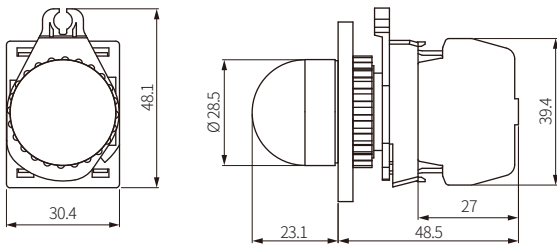
Model	Contact block		LED block	
	A contact	B contact	AC/DC voltage	AC voltage
L2RR-L1□D(M)			1	-
L2RR-L1□L(M)			-	1
L2RR-L2□D(M)			1	-
L2RR-L2□L(M)			-	1
L2RR-L3□D(M)	-	-	1	-
L2RR-L3□L(M)			-	1
L2RR-L4□D(M)			1	-
L2RR-L4□L(M)			-	1

01) Only available for light unit. Select the block separately.

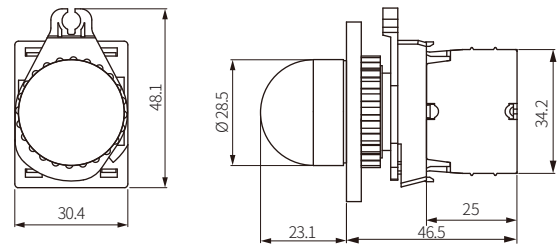
## Dimensions

- Unit: mm, For the detailed drawings, follow the Autonics website.
- Panel thickness:  $\leq 6$  mm

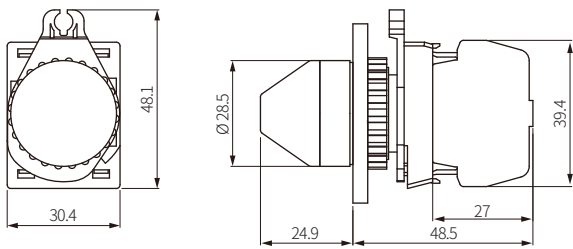
### ■ L2RR-L1 □ (extended dome head, singular type block)



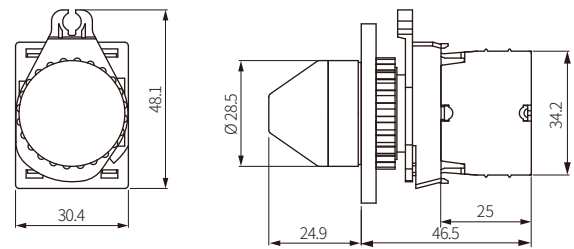
### ■ L2RR-L1 □ M (extended dome head, modular type block)



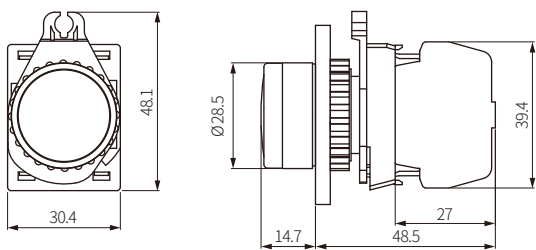
### ■ L2RR-L2 □ (extended horn head, singular type block)



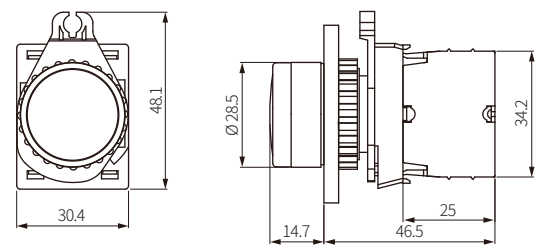
### ■ L2RR-L2 □ M (extended horn head, modular type block)



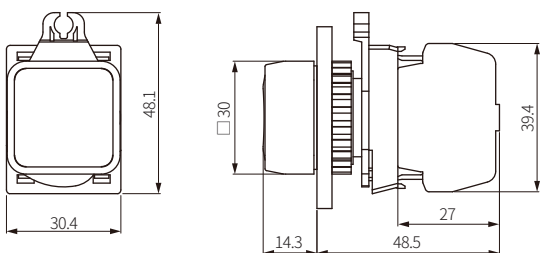
### ■ L2RR-L3 □ (extended flat round head, singular type block)



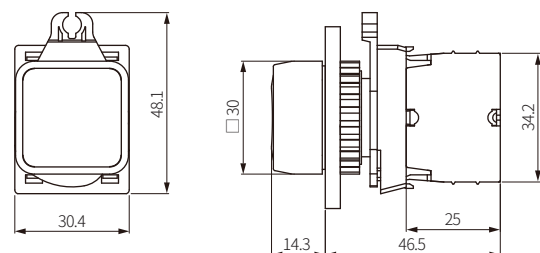
### ■ L2RR-L3 □ M (extended flat round head, modular type block)



### ■ L2RR-L4 □ (extended flat square head, singular type block)

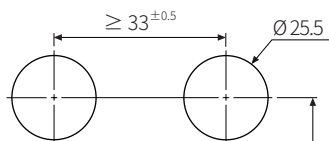


### ■ L2RR-L4 □ M (extended flat square head, modular type block)



### ■ Panel cut-out

<Mounting round:  $\varnothing 25$ >



<Mounting round:  $\varnothing 22$ >

