

DIGITAL GEAR TOOTH MICROMETER



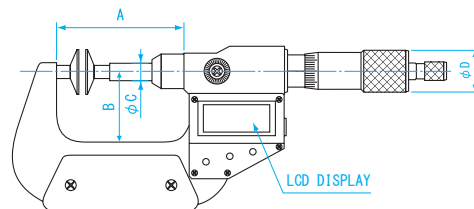
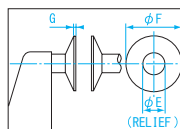
Suitable for thickness measurement of gear and paper by disk type measuring faces



MCD230-25D

| | | | |
|---|---|---|--|
| Reference standard for calibration Block Gauge P42 ~49 | Zero point setting Setting Standards P225 | For holding micrometers Micrometer Stand P226 | Rust prevention Zerust Film for Steel P380 |
|---|---|---|--|

● DIMENSIONS



Units: mm

| Model No. | A | B | C | D | E | F | G |
|------------|----|------|---|----|---|----|-----|
| MCD230-25D | 43 | 32 | 8 | 18 | 8 | 20 | 0.7 |
| MCD230-50D | 68 | 44.5 | | | | | |

※ Quantization Error (± 1 digit) not included

| Order No. | Model No. | Measuring Range (mm) | Resolution (mm) | Maximum Error* (μm) | Gear Module | Weight |
|-----------|------------|----------------------|-----------------|---------------------|-------------|--------|
| 152141 | MCD230-25D | 0 ~ 25 | 0.001 | 4 | 0.5 ~ 6 | 400g |
| 152142 | MCD230-50D | 25 ~ 50 | | | | 540g |

USE

- Disk type measuring faces for measuring gear and paper thickness

MATERIAL

- Frame: Carbon steel
- Spindle: High carbon chrome steel

FEATURES

- Quick digital display of the measured value
- With ratchet stop
- With thermal protection cover
- Auto display off function (after approx. 5 min.)
- Painted frame
- One setting standard included (MCD230-50D)

POWER

- One SR44 (Silver oxide) battery included for testing

GEAR TOOTH MICROMETER



Suitable for thickness measurement of gear and paper by disk type measuring faces

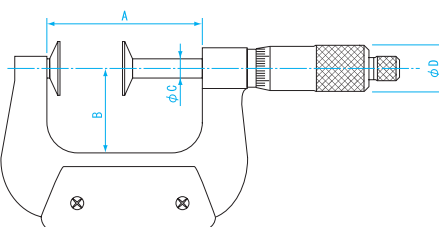
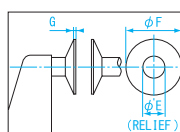


MC200-25D



| | | | |
|---|---|---|--|
| Reference standard for calibration Block Gauge P42 ~49 | Zero point setting Setting Standards P225 | For holding micrometers Micrometer Stand P226 | Rust prevention Zerust Film for Steel P380 |
|---|---|---|--|

● DIMENSIONS



Units: mm

| Model No. | A | B | C | D | E | F | G |
|-----------|----|----|---|----|---|----|-----|
| MC200-25D | 34 | 22 | 8 | 18 | 8 | 20 | 0.7 |
| MC200-50D | 59 | 31 | | | | | |

USE

- Disk type measuring faces for measuring gear and paper thickness

MATERIAL

- Frame: Carbon steel
- Spindle: High carbon chrome steel

FEATURES

- With ratchet stop
- With thermal protection cover
- Painted frame
- One setting standard included (MC200-50D)

| Order No. | Model No. | Measuring Range (mm) | Resolution (mm) | Maximum Error* (μm) | Gear Module | Weight |
|-----------|-----------|----------------------|-----------------|---------------------|-------------|--------|
| 151481 | MC200-25D | 0 ~ 25 | 0.01 | 4 | 0.5 ~ 6 | 240g |
| 151482 | MC200-50D | 25 ~ 50 | | | | 330g |