

MSGT Series Cubic Tower LED Warning Light with 5 Sounds

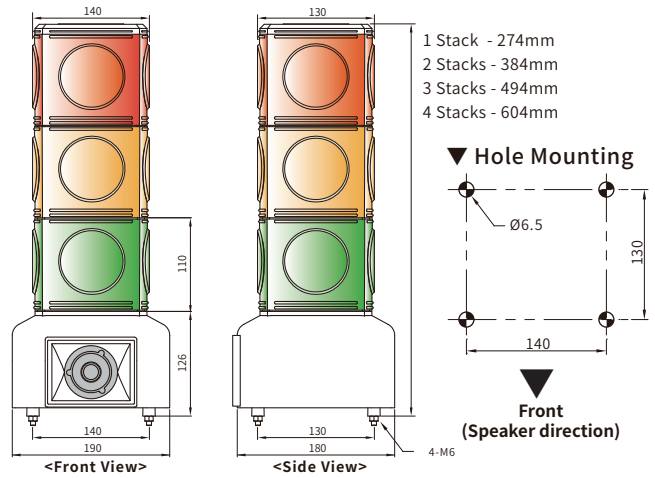


built in sounds-
3 types of siren,
2 types of melody



MSGT Series has excellent visibility and brightness with a dual reflection system both indoors and outdoors regardless of LED functions. You can easily control each LED functions with the built-in mode change switches. MSGT Series features more than 100dB(1M) volume, high quality sound and maintenance free operation.

Dimensions <Unit: mm>



Ordering information

MSGT - 3 20 - RYG

① Number of Stack		② Power Supply					
1	1 Stack	3	3 Stacks	01	12VDC	10	110VAC
2	2 Stacks	4	4 Stacks	02	24VDC	20	220VAC

③ Lens Color (Top to Bottom)			
R	Red	B	Blue
Y	Yellow	G	Green

Specifications

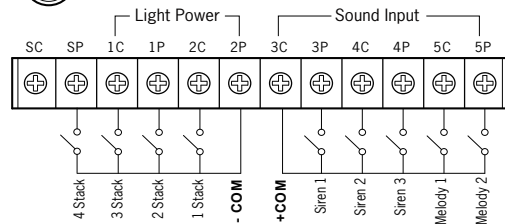
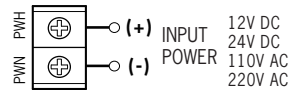
Function	Steady, Flashing, Rotation
Power supply	12VDC ±5%, 24VDC ±5% 110VAC ±10%, 220VAC ±10% (AC: 50/60Hz)
Replacement fuse	Glass tube fuse : 51NR, 250V/1A In case of 12VDC & 4 stacks : 250V/2A
Dimension	190 x 180 mm (Body Size)
Maximum stacked quantity	Fixed frame, 1~3 stack versions available (4 stack : option)
Flashing rate	Continuous flashing (emergency signal) 240 ±10 times per minute
Rotating rate	250 ±10rpm (Clockwise Rotation)
Sound volume	Speaker 15W / App. 100 ±5dB at 1 meter
Sound type	Siren - 3types, Melody - 2 types
Ambient humidity	45 ~ 85% RH
Ambient temperature	-15 ~ 40°C
Storage ambient temperature	-20 ~ 70°C
Vibration	0.75mm at 10 ~ 55Hz
Withstand voltage	500VAC 50/60 Hz for 1 minute
Insulation resistance	More than 100MΩ (500VDC)
Protection structure	IP23 (Upright)
Weight	App. [1S: 2.7Kg] [2S: 3.3Kg] [3S: 4.0Kg]
Approval	RoHS

Note: Life of the LED varies according to operating conditions and environment

Current Consumption (Maximum current consumption when LED is lit)

Number of Stacks	LED Color	※ Standard type-Only LED		※ Speaker-Both LED and Speaker					
		12VDC	24VDC	110VAC	220VAC	Standard	Speaker		
1 Stack	Red	0.25A	0.47A	0.14A	0.36A	0.11A	0.15A	0.05A	0.07A
	Yellow	0.37A	0.49A	0.15A	0.37A	0.12A	0.15A	0.07A	0.09A
	Green	0.33A	0.53A	0.19A	0.4A	0.12A	0.16A	0.06A	0.08A
2 Stacks	RG	0.52A	0.69A	0.3A	0.51A	0.15A	0.19A	0.07A	0.1A
	RY	0.47A	0.66A	0.26A	0.48A	0.14A	0.18A	0.07A	0.09A
3 Stacks	RYG	0.68A	0.84A	0.42A	0.64A	0.19A	0.23A	0.09A	0.11A
	RBG	0.68A	0.84A	0.42A	0.64A	0.19A	0.23A	0.09A	0.11A
4 Stacks	RYGB	1.50A	1.50A	0.57A	1.50A	0.31A	0.38A	0.16A	0.2A

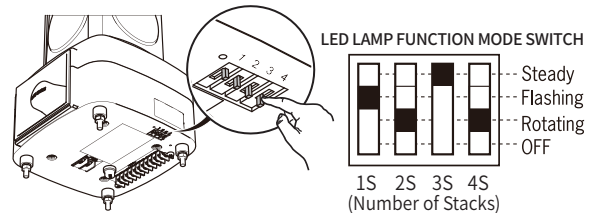
Connection Diagram



Sound List

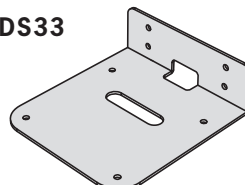
- 3P / Siren 1 - An ambulance siren
- 4C / Siren 2 - Police car siren
- 4P / Siren 3 - Fire car siren
- 5C / Melody 1 - Home Sweet Home
- 5P / Melody 2 - For Elise

⚠ Be careful of wiring Light COM and Sound Com. It may cause product damage.



Optional Parts Wall Mounting Bracket

MAM-DS33
Steel



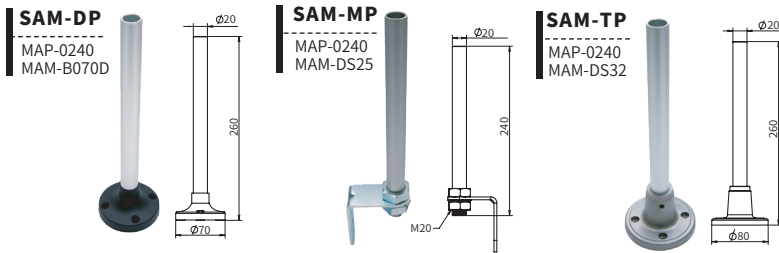
See Page 80 ~ 81 >>
for Mounting Options
and Accessories.

Accessories Parts

Ordering information and Dimensions (UNIT : mm)

Semi-assembled pole mounting base

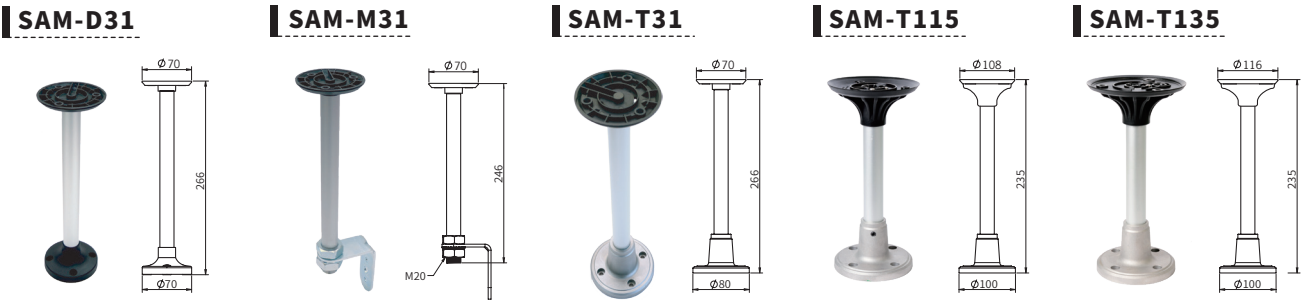
PTE, PTM, PTD, PME, MT4, MT5 series



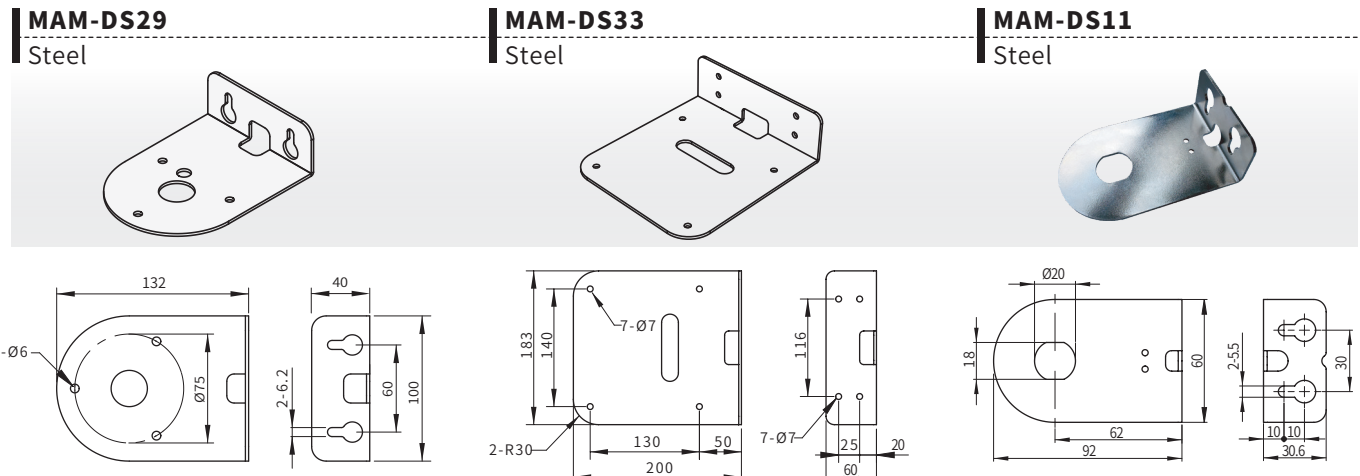
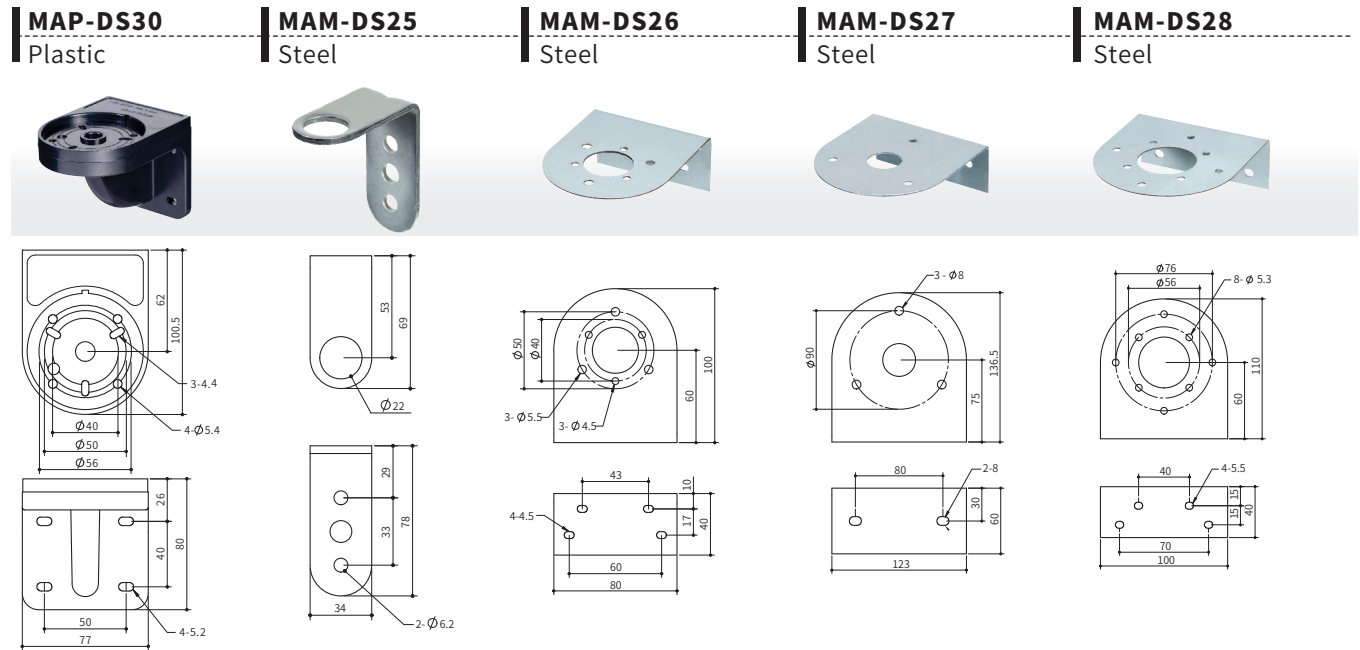
MS86 series dedicated part

MS115 series

MS135 series



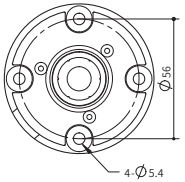
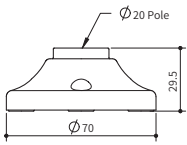
Wall Mounting Bracket



Mount Base

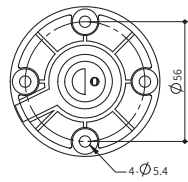
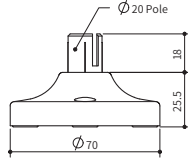
MAM-B070B

Plastic



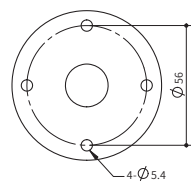
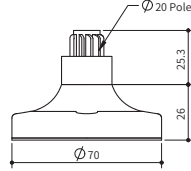
MAM-B070C

Plastic



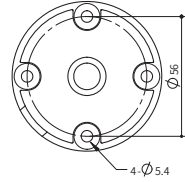
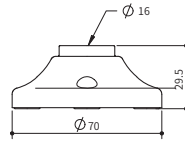
MAM-B070D

Plastic



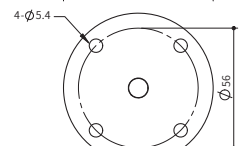
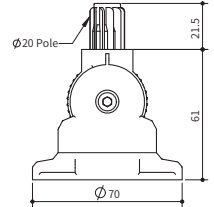
MAM-B070F

Plastic



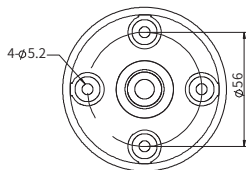
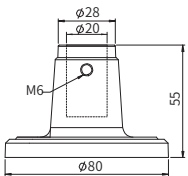
MAM-B070R

Plastic



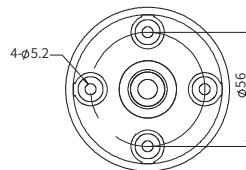
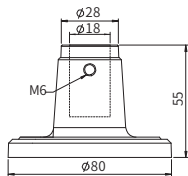
MAM-DS32A

Aluminum



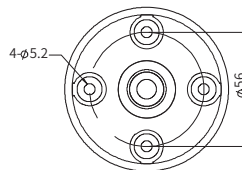
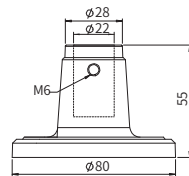
MAM-DS32B

Aluminum



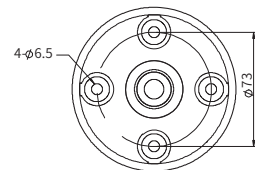
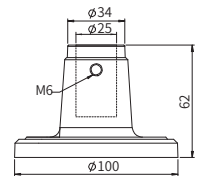
MAM-DS32C

Aluminum



MAM-DS35

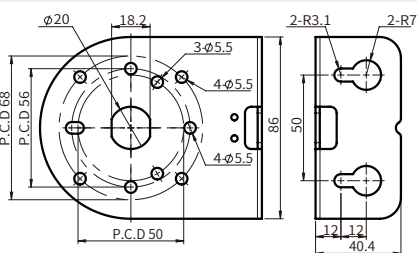
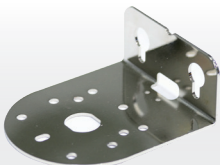
Aluminum



Wall Mounting Bracket

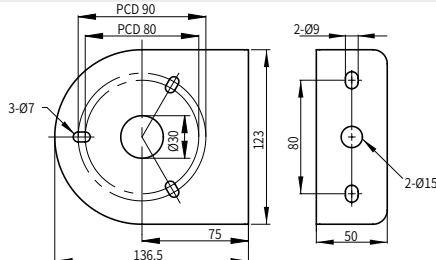
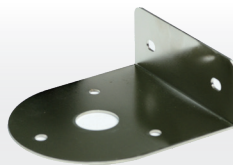
MAM-DS10

Steel



MAM-DS37

Steel



MAM-DS38

Steel

