

# TYPE: BOX- P

Pull Box

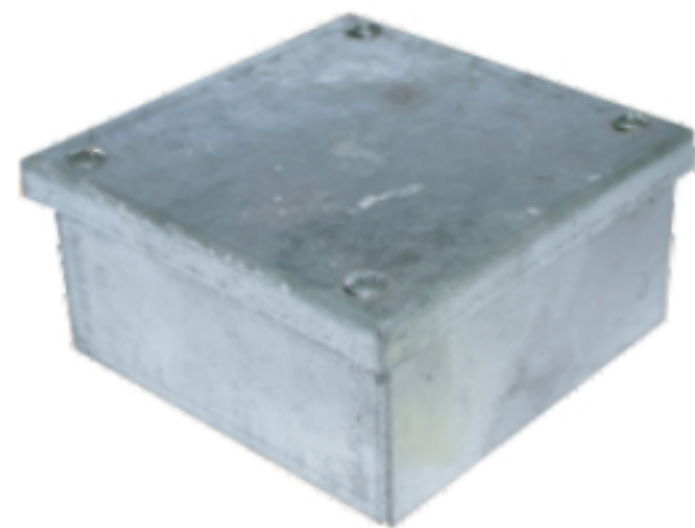
Material:

Powder Coated Steel

Hot dip galvanized Steel

Thickness

1.0mm, 1.2mm 1.6mm, 2.5mm



| Dim.<br>mm | Dim.<br>mm  | Dim.<br>mm  | Dim.<br>mm  |
|------------|-------------|-------------|-------------|
| PB 101010  | 200x200x200 | 300x300x200 | 400x400x300 |
| PB 151515  | 250x250x100 | 300x300x250 | 400x400x400 |
| PB 151515  | 250x250x150 | 300x300x300 | 500x500x200 |
| PB 202020  | 250x250x200 | 400x400x200 | 500x500x250 |
| PB 202015  | 300x300x150 | 400x400x250 | 500x500x300 |