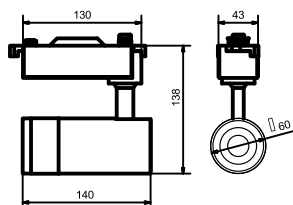




LED



LED TRACK LIGHT PSLUU Series



LED track light utilize high quality LED chips. With its high color rendering index (CRI ≥90), it is able to illuminate the true colors of an object. Energy efficient, long lifespan and environmentally friendly.

≥0.9	90Ra	IP20	50,000 Hours	AC100 240V	50-60Hz
Power factor	CRI	Protection grade	Lifespan	Voltage	Frequency

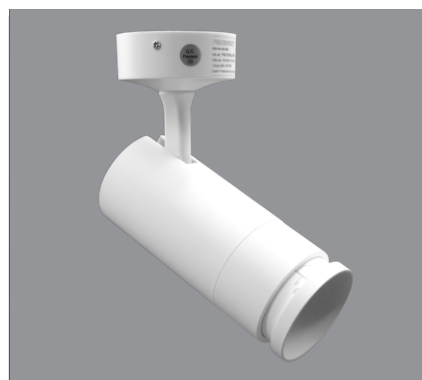
Outstanding features

- Bridgelux/Cree
- High quality aluminium alloy heat sink
- 3000K(Warm white) / 4200K(Neutral white) / 6500K(Cool daylight)
- Energy saving
- Flicker-free
- Low glare
- Adjustable zoom angle 15° - 60°
- High color rendering

SPECIFICATION AND PRICE

Model	PSLUU10L	PSLUU20L	PSLUU30L
LED chip	Bridgelux/Cree		
Wattage (W)	10W	20W	30W
Efficacy (Lm/W)	80	80	80
Lumen (Lm)	800	1600	2400
Color temperature (K)	3000/4200/6500		
Dimensions (mm)			
Unit price (USD)	\$32.87	\$46.96	\$63.83

NO	Type	Model Code	Unit Price
1	Light track 2 wire 1m - Black/White	PR001W-G2 / PR001B-G2	\$14.78
2	Light track 2 wire 1.5m - Black/White	PR0015W-G2 / PR0015B-G2	\$19.26
3	I-connector - Black/White	PR002W / PR002B-G2	\$2.96
4	L-connector - Black/White	PR003W / PR003B-G2	\$4.30
5	T-connector - Black/White	PR004W / PR004B	\$3.52
6	X-connector - Black/White	PR005W / PR005B	\$4.39



Suggested installation areas



Special color LED for fashion, retail and fresh food.