



QLTF

PRODUCT SPECIFICATION

QLTF

Materials Lens-AS, Body-ABS**Ambient operating temperature** -30°C to +50°C**Volume** Max.65dB at 1m**Protection rating**

Standard type-IP23, Built-in buzzer type-IP55

Flashing rate 50-70/min**Compliant with RoHS directive**

- Compact size with small LED steady/flash light
- Excellent visibility by adopting special diffused lens
- The smallest model suitable for OA equipment with narrow mounting space, small sized machines, and simple automatic equipment produced in mass production



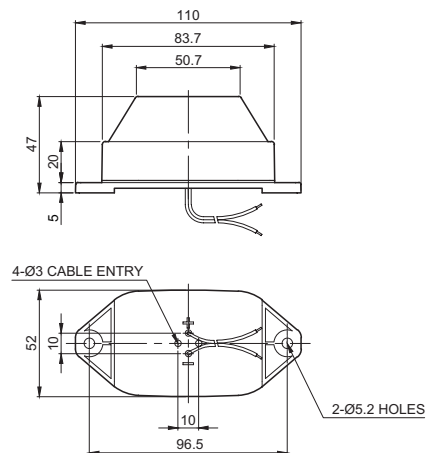
QLTF LED flash indicator

Model number	Voltage	Current	Certificates	Weight	Color
QLTF	DC24V	125mA	CE	0.08kg	● R-Red ● A-Amber
	DC12V-24V	Max.125mA			

Technical Diagram

Units: mm

·QLTF



Wiring Instructions

- External Power line UL1015 AWG18(0.75sq) x 2C 400mm
- This product can be wired regardless of polarity.

Ordering Specification

QLTF	-	12/24	-	R
[Model number]		[Voltage]		[Color]
QLTF		24-DC24V 12/24-DC12V-24V		● R-Red ● A-Amber