

COPPER TUBE TERMINALS (TL)

04

Material: Copper tube (Cu) 99% up **Surface:** Tin plated **Range size (mm²):** 1.5-1000



No.	Items	Dimension (mm)							Thickness (mm)	Weight (g)
		d2	d1	D	B	E	F	L		
18	TL500-12	13	30	39	56	48	48	124	4.5	547.5
	TL500-14	15	30	39	56	48	48	124	4.5	544
	TL500-16	17	30	39	56	48	48	124	4.5	540
	TL500-18	19	30	39	56	48	48	124	4.5	535.6
	TL500-20	21	30	39	56	48	48	124	4.5	530.6
19	TL630-12	13	34.5	44	63.5	52	51	130	4.75	659
	TL630-14	15	34.5	44	63.5	52	51	130	4.75	655.2
	TL630-16	17	34.5	44	63.5	52	51	130	4.75	651
	TL630-18	19	34.5	44	63.5	52	51	130	4.75	646.3
	TL630-20	21	34.5	44	63.5	52	51	130	4.75	641
20	TL800-12	15	40	51.2	74	54	56	140	5.6	971
	TL800-14	17	40	51.2	74	54	56	140	5.6	966
	TL800-16	19	40	51.2	74	54	56	140	5.6	960.5
	TL800-18	21	40	51.2	74	54	56	140	5.6	954.3
	TL800-20	23	40	51.2	74	54	56	140	5.6	948.1
21	TL1000-12	15	44	56.6	81.5	60	56	146	6.3	1,259.40
	TL1000-14	17	44	56.6	81.5	60	56	146	6.3	1,253.90
	TL1000-16	19	44	56.6	81.5	60	56	146	6.3	1,247.60
	TL1000-18	21	44	56.6	81.5	60	56	146	6.3	1,240.60
	TL1000-20	23	44	56.6	81.5	60	56	146	6.3	1,233.60

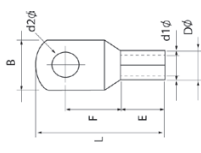
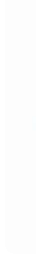
CRIMPING TOOLS

Item size (mm ²)	1.5 - 10	6 - 16	10 - 25	10 - 35	> 35
Tools	LS-8	LS-16	LS-22	LS-38	YQK-300

COPPER TUBE TERMINALS (SC)

01

Material: Copper tube (Cu) 99% up **Surface:** Tin plated **Range size (mm²):** 1.5-1000



No.	Items	Dimension (mm)							Thickness (mm)	Weight (g)
		d2	d1	D	B	E	F	L		
1	SC1.5-3	3.2	2.2	3.7	8	7	7	20	0.5	0.79
	SC1.5-4	4.2	2.2	3.7	8	7	7	20	0.5	0.79
	SC1.5-5	5.2	2.2	3.7	10	7	7	20	0.5	0.79
	SC1.5-6	6.2	2.2	3.7	10	7	7	20	0.5	0.79
	SC2.5-3	3.2	2.4	3.9	8	7	7	20	0.5	0.84
2	SC2.5-4	4.2	2.4	3.9	8	7	7	20	0.5	0.84
	SC2.5-5	5.2	2.4	3.9	10	7	7	20	0.5	0.84
	SC2.5-6	6.2	2.4	3.9	10	7	7	20	0.5	0.84
	SC2.5-8	8.2	2.4	3.9	12.5	7	7	20	0.5	0.84
	SC4-4	4.2	2.8	4.5	10	7	8	20	0.65	1.38
3	SC4-5	5.2	2.8	4.5	10	7	8	20	0.65	1.38
	SC4-6	6.2	2.8	4.5	10	7	8	20	0.65	1.38
	SC4-8	8.2	2.8	4.5	12.5	7	8	20	0.65	1.38
	SC6-4	4.2	4.1	5.5	10	9	9	24	0.7	1.63
	SC6-5	5.2	4.1	5.5	10	9	9	24	0.7	1.6
4	SC6-6	6.2	4.1	5.5	10	9	9	24	0.7	1.48
	SC6-8	8.2	4.1	5.5	12	9	9	27	0.7	1.45
	SC6-10	10.2	4.1	5.5	15	9	9	27	0.7	1.43
	SC10-4	4.2	4.6	6.2	10	9	10	25	0.8	2.81
	SC10-5	5.2	4.6	6.2	10	9	10	25	0.8	2.71
5	SC10-6	6.2	4.6	6.2	10	9	10	25	0.8	2.65
	SC10-8	8.2	4.6	6.2	12.5	9	10	27	0.8	2.62
	SC10-10	10.2	4.6	6.2	15	9	10	27	0.8	2.59
	SC16-5	5.2	5.5	7.1	10	12	11	27	0.8	3.91
	SC16-6	6.2	5.5	7.1	10	12	11	27	0.8	3.85
6	SC16-8	8.2	5.5	7.1	12.5	12	11	30	0.8	3.82
	SC16-10	10.2	5.5	7.1	15	12	11	30	0.8	3.79

Material: Copper tube (Cu) 99% up **Surface:** Tin plated **Range size (mm²):** 1,5-1000 **CE** 

No.	Items	Dimension (mm)						Thickness (mm)	Weight (g)	
		d2	d1	D	B	E	F			L
7	SC25-5	5.2	7	8.8	12.5	13	12	30	0.9	6.09
	SC25-6	6.2	7	8.8	12.5	13	12	30	0.9	5.97
	SC25-8	8.2	7	8.8	12.5	13	12	30	0.9	5.83
	SC25-10	10.2	7	8.8	15	13	12	32	0.9	5.8
	SC25-12	12.2	7	8.8	17	13	12	34	0.9	5.8
8	SC35-5	5.5	8.6	10.6	15	14	14	35	1	9.43
	SC35-6	6.5	8.6	10.6	15	14	14	35	1	9.27
	SC35-8	8.5	8.6	10.6	15	14	14	35	1	8.9
	SC35-10	10.5	8.6	10.6	15	14	14	37	1	8.6
	SC35-12	12.5	8.6	10.6	18.5	14	14	37	1	8.6
9	SC50-6	6.5	10	12.4	18	16	17	43	1.2	15.37
	SC50-8	8.5	10	12.4	18	16	17	43	1.2	14.9
	SC50-10	10.5	10	12.4	18	16	17	43	1.2	14.3
	SC50-12	12.5	10	12.4	19	16	17	43	1.2	14.1
	SC50-14	15	10	12.4	21	16	17	43	1.2	14.1
10	SC70-6	6.5	11.9	14.7	21	18	20	48	1.4	24.96
	SC70-8	8.5	11.9	14.7	21	18	20	48	1.4	24.4
	SC70-10	10.5	11.9	14.7	21	18	20	48	1.4	23.7
	SC70-12	12.5	11.9	14.7	21	18	20	48	1.4	22.7
	SC70-14	15	11.9	14.7	21	18	20	48	1.4	21.4
11	SC95-6	6.5	14.2	17.4	25.5	20	22	54	1.6	37.55
	SC95-8	8.5	14.2	17.4	25.5	20	22	54	1.6	36.92
	SC95-10	10.5	14.2	17.4	25.5	20	22	54	1.6	36.1
	SC95-12	13	14.2	17.4	25.5	20	22	54	1.6	34.7
	SC95-14	15	14.2	17.4	25.5	20	22	54	1.6	33.5
12	SC120-6	6.5	15.8	19.4	28	24	24	61	1.8	53.3
	SC120-8	8.5	15.8	19.4	28	24	24	61	1.8	52.63
	SC120-10	10.5	15.8	19.4	28	24	24	61	1.8	51.6
	SC120-12	13	15.8	19.4	28	24	24	61	1.8	50.1
	SC120-14	15	15.8	19.4	28	24	24	61	1.8	48.7
SC120-16	17	15.8	19.4	28	24	24	61	1.8	47.1	

Material: Copper tube (Cu) 99% up **Surface:** Tin plated **Range size (mm²):** 1,5-1000 **CE** 

No.	Items	Dimension (mm)						Thickness (mm)	Weight (g)	
		d2	d1	D	B	E	F			L
13	SC150-8	8.5	17.4	21.2	30.5	26	27	68	1.9	68.24
	SC150-10	10.5	17.4	21.2	30.5	26	27	68	1.9	67.1
	SC150-12	13	17.4	21.2	30.5	26	27	68	1.9	65.6
	SC150-14	15	17.4	21.2	30.5	26	27	68	1.9	64.1
	SC150-16	17	17.4	21.2	30.5	26	27	68	1.9	62.4
14	SC185-6	6.5	19.1	23.5	34	32	29	78	2.2	99.84
	SC185-8	8.5	19.1	23.5	34	32	29	78	2.2	98.96
	SC185-10	10.5	19.1	23.5	34	32	29	78	2.2	97.7
	SC185-12	13	19.1	23.5	34	32	29	78	2.2	95.9
	SC185-14	15	19.1	23.5	34	32	29	78	2.2	94.2
15	SC185-16	17	19.1	23.5	34	32	29	78	2.2	92.3
	SC240-6	6.5	21.9	26.5	38.5	38	34	90	2.3	140.3
	SC240-8	8.5	21.9	26.5	38.5	38	34	90	2.3	139.3
	SC240-10	10.5	21.9	26.5	38.5	38	34	90	2.3	138.1
	SC240-12	13	21.9	26.5	38.5	38	34	90	2.3	136.3
16	SC240-14	15	21.9	26.5	38.5	38	34	90	2.3	134.5
	SC240-16	17	21.9	26.5	38.5	38	34	90	2.3	132.5
	SC240-18	19	21.9	26.5	38.5	38	34	90	2.3	130.2
	SC240-20	21	21.9	26.5	38.5	38	34	90	2.3	127.6
	SC300-8	8.5	24.6	30	43.5	42	37	101	2.7	203.1
17	SC300-10	10.5	24.6	30	43.5	42	37	101	2.7	204.4
	SC300-12	13	24.6	30	43.5	42	37	101	2.7	199.5
	SC300-14	15	24.6	30	43.5	42	37	101	2.7	197.4
	SC300-16	17	24.6	30	43.5	42	37	101	2.7	195
	SC300-18	19	24.6	30	43.5	42	37	101	2.7	192.3
18	SC300-20	21	24.6	30	43.5	42	37	101	2.7	189.4
	SC400-12	13	29.9	36.5	53	44	44	113	3.3	337.6
	SC400-14	15	29.9	36.5	53	44	44	113	3.3	335
	SC400-16	17	29.9	36.5	53	44	44	113	3.3	332.2
	SC400-18	19	29.9	36.5	53	44	44	113	3.3	328.9
19	SC400-20	21	29.9	36.5	53	44	44	113	3.3	325.2
	SC400-22	23	29.9	36.5	53	44	44	113	3.3	321.2

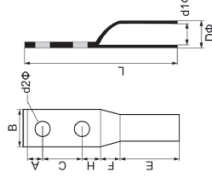
Material: Copper tube (Cu) 99% up **Surface:** Tin plated **Range size (mm²):** 1.5-1000



No.	Items	Dimension (mm)							Thickness (mm)	Weight (g)
		d2	d1	D	B	E	F	L		
18	SC500-12	13	31.8	39	56	48	48	124	3.6	428.5
	SC500-14	15	31.8	39	56	48	48	124	3.6	425.7
	SC500-16	17	31.8	39	56	48	48	124	3.6	422.5
	SC500-18	19	31.8	39	56	48	48	124	3.6	418.9
	SC500-20	21	31.8	39	56	48	48	124	3.6	414.9
19	SC630-12	13	36	44	63.5	52	51	130	4	565.7
	SC630-14	15	36	44	63.5	52	51	130	4	562.6
	SC630-16	17	36	44	63.5	52	51	130	4	559
	SC630-18	19	36	44	63.5	52	51	130	4	555
	SC630-20	21	36	44	63.5	52	51	130	4	550.6
20	SC800-14	15	41.6	51.2	74	54	56	140	4.8	847.1
	SC800-16	17	41.6	51.2	74	54	56	140	4.8	842.8
	SC800-18	19	41.6	51.2	74	54	56	140	4.8	838
	SC800-20	21	41.6	51.2	74	54	56	140	4.8	832.8
	SC1000-14	15	46.6	56.6	81.5	60	56	146	5	1,425.30
21	SC1000-16	17	46.6	56.6	81.5	60	56	146	5	1,420.80
	SC1000-18	19	46.6	56.6	81.5	60	56	146	5	1,415.80
	SC1000-20	21	46.6	56.6	81.5	60	56	146	5	1,410.30
	SC1000-22	23	46.6	56.6	81.5	60	56	146	5	1,410.30

CRIMPING TOOLS

Item size (mm ²)	1.5 - 10	6 - 16	10 - 25	10 - 35	> 35
Tools	LS-8	LS-16	LS-22	LS-38	YQK-300



Material: Copper tube (Cu) 99% up **Surface:** Tin plated **Range size (mm²):** 10-1000

Items	Dimension (mm)											Thickness (mm)	Weight (g)
	d2	d1	D	A	B	C	E	F	H	L			
TTL10-6	6.2	4.5	6.2	7.5	12	44.4	21.5	7.4	9.5	90.3	0.85	10.45	
TTL10-8	8.2	4.5	6.2	7.5	12	44.4	21.5	7.4	9.5	90.3	0.85	9.77	
TTL10-10	10.2	4.5	6.2	7.5	14	44.4	21.5	7.4	9.5	90.3	0.85	8.95	
TTL16-6	6.2	5.4	7.1	8	12	44.4	25	7.4	10	94.8	0.85	13	
TTL16-8	8.2	5.4	7.1	8	12	44.4	25	7.4	10	94.8	0.85	12.32	
TTL16-10	10.2	5.4	7.1	8	14	44.4	25	7.4	10	94.8	0.85	11.5	
TTL16-12	12.2	5.4	7.1	8	16.5	44.4	25	7.4	10	94.8	0.85	10.3	
TTL25-6	6.2	6.8	8.8	8.5	15	44.4	28.5	7.4	10.5	99.3	1	20.4	
TTL25-8	8.2	6.8	8.8	8.5	15	44.4	28.5	7.4	10.5	99.3	1	19.6	
TTL25-10	10.2	6.8	8.8	8.5	15	44.4	28.5	7.4	10.5	99.3	1	18.6	
TTL25-12	12.2	6.8	8.8	8.5	16.5	44.4	28.5	7.4	10.5	99.3	1	17.2	
TTL35-6	6.5	8.2	10.6	9	17	44.4	32	8	11	104.4	1.2	31.4	
TTL35-8	8.5	8.2	10.6	9	17	44.4	32	8	11	104.4	1.2	30.6	
TTL35-10	10.5	8.2	10.6	9	17	44.4	32	8	11	104.4	1.2	29.2	
TTL35-12	12.5	8.2	10.6	9	17	44.4	32	8	11	104.4	1.2	27.6	
TTL50-8	8.5	9.5	12.4	12.7	19	44.4	35	10.9	14.7	117.7	1.45	48.9	
TTL50-10	10.5	9.5	12.4	12.7	19	44.4	35	10.9	14.7	117.7	1.45	47.3	
TTL50-12	12.5	9.5	12.4	12.7	19	44.4	35	10.9	14.7	117.7	1.45	45.4	
TTL50-14	15	9.5	12.4	12.7	21	44.4	35	10.9	14.7	117.7	1.45	42.7	
TTL50-16	17	9.5	12.4	12.7	23	44.4	35	10.9	14.7	117.7	1.45	40.3	
TTL70-8	8.5	11.2	14.7	13.9	21	44.4	35	10.9	17.9	122.1	1.75	73.1	
TTL70-10	10.5	11.2	14.7	13.9	21	44.4	35	10.9	17.9	122.1	1.75	71.3	
TTL70-12	12.5	11.2	14.7	13.9	21	44.4	35	10.9	17.9	122.1	1.75	69.1	
TTL70-14	15	11.2	14.7	13.9	21	44.4	35	10.9	17.9	122.1	1.75	65.7	
TTL70-16	17	11.2	14.7	13.9	24	44.4	35	10.9	17.9	122.1	1.75	62.7	
TTL95-8	8.5	13.5	17.4	13.9	25.5	44.4	38	15.8	17.9	130	1.95	104.5	
TTL95-10	10.5	13.5	17.4	13.9	25.5	44.4	38	15.8	17.9	130	1.95	102.5	
TTL95-12	13	13.5	17.4	13.9	25.5	44.4	38	15.8	17.9	130	1.95	99.3	