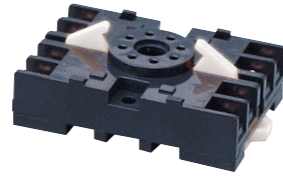


# 소켓 SOCKET

## 소켓 Sockets

- 릴레이, 타이머 등 취부  
For use With Relays, Timers and etc.
- 채널 및 나사취부 겸용  
DIN Rail or Screw Mountable
- 정격전류 7A, 10A  
Rating 7A, 10A 250VAC



## MY 릴레이 소켓 Sequence relay socket type

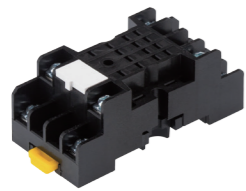
### 전기적특성/적용압착단자

Electric characteristics/Applicable terminal sizes

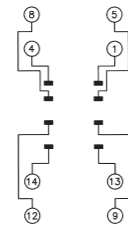
형식 Type	SH-RS-MY2		SH-RS-MY4	
정격절연전압	Rating insulation voltage	AC 250V		
정격전류	Rating current	250VAC 7A		
절연저항	Insulation resistance	100MΩ 이상(DC500V MΩ 절연저항계)	min 100MΩ at DC500V	
내전압	Dielectric strength	AC 2000V 50/60Hz 1min		
단자나사	Terminal screw size	M3		
연결단자 Terminal	e	Min 4.5mm		
	f	Min φ3.1		
	w	Max 6.0mm		
	l	Min 15.7mm		

### 주문형식 Type

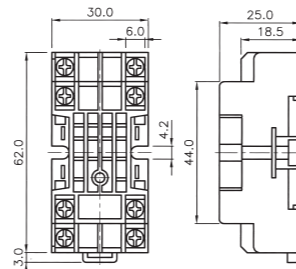
SH-RS-MY2



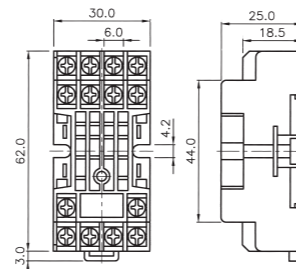
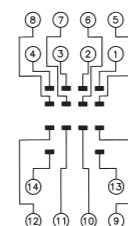
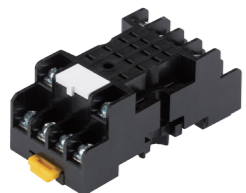
### 회로접속도 Diagram



### 외형치수 Dimensions



SH-RS-MY4



Note : 단자나사의 재질은 스테인레스도 가능합니다.  
The material of the terminal screw is mild steel as standard.  
Stainless steel screw are available on request.

## LY 릴레이 소켓 Power relay socket type

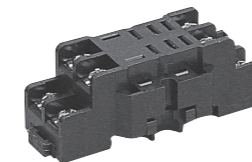
### 전기적특성/적용압착단자

Electric characteristics/Applicable terminal sizes

형식 Type	SH-RS-LY2		SH-RS-LY4	
정격절연전압	Rating insulation voltage	AC 250V		
정격전류	Rating current	250VAC 10A		
절연저항	Insulation resistance	100MΩ 이상(DC500V MΩ 절연저항계)	min 100MΩ at DC500V	
내전압	Dielectric strength	AC 2000V 50/60Hz 1min		
단자나사	Terminal screw size	M3.5		
연결단자 Terminal	e	Min 4.5mm		
	f	Min φ3.6		
	w	Max 6.8mm		
	l	Min 15.7mm		

### 주문형식 Type

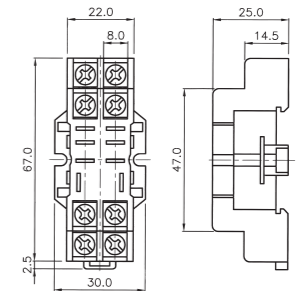
SH-RS-LY2



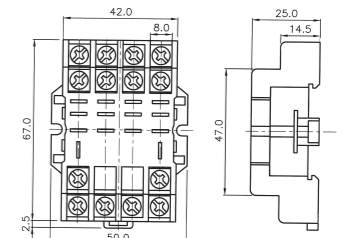
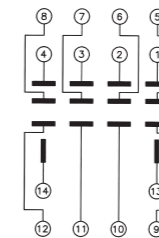
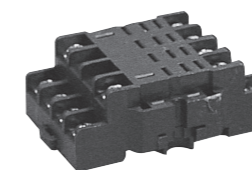
### 회로접속도 Diagram



### 외형치수 Dimensions



SH-RS-LY4



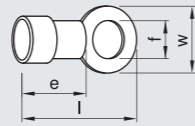
Note : 단자나사의 재질은 스테인레스도 가능합니다.  
The material of the terminal screw is mild steel as standard.  
Stainless steel screw are available on request.

## 8핀, 11핀 소켓 8pin, 11pin relay/timer socket type

### 전기적 특성/적용압착 단자

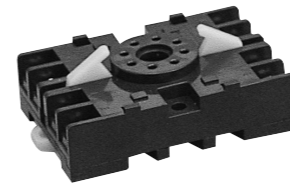
Electric characteristics/Applicable terminal sizes

형식 Type	SH-RS-8	SH-RS-11	SH-TS-1	SH-TS-2
정격절연전압 Rating insulation voltage	AC 250V			
정격전류 Rating current	250VAC 10A			
절연저항 Insulation resistance	100MΩ 이상(DC500V MΩ 절연저항계)		min 100MΩ at DC500V	
내전압 Dielectric strength	AC 2000V 50/60Hz 1min			
단자나사 Terminal screw size	M3,5			
연결단자 Terminal	e	Min 4.5mm		
	f	Min $\phi$ 3,6		
	w	Max 6,8mm		
	l	Min 15,7mm		

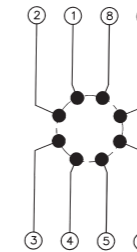


주문형식  
Type

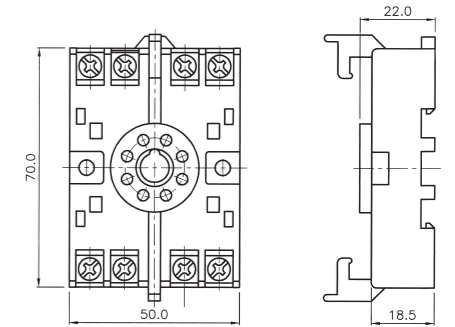
SH-TS-1



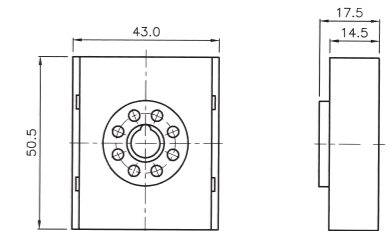
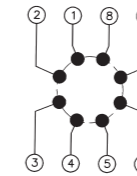
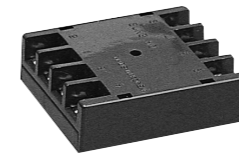
회로접속도  
Diagram



외형치수  
Dimensions

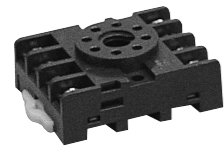


SH-TS-2

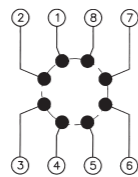


주문형식  
Type

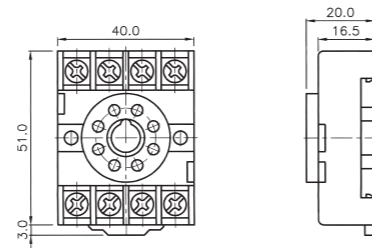
SH-RS-8



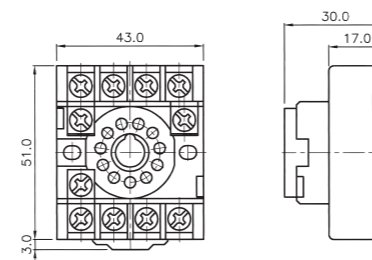
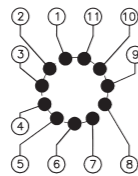
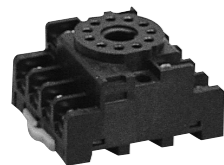
회로접속도  
Diagram



외형치수  
Dimensions



SH-RS-11



Note : 단자나사의 재질은 스테인레스도 가능합니다.  
The material of the terminal screw is mild steel as standard.  
Stainless steel screw are available on request.