

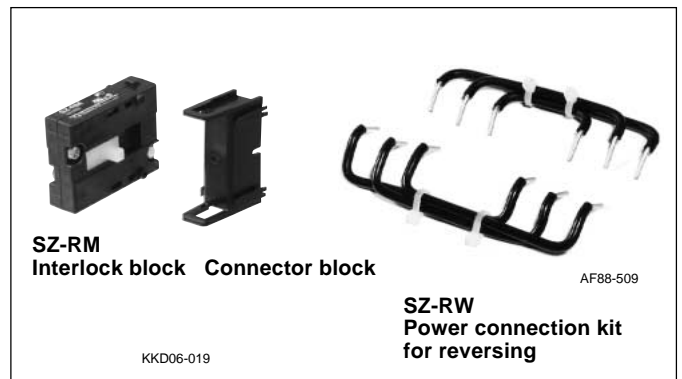
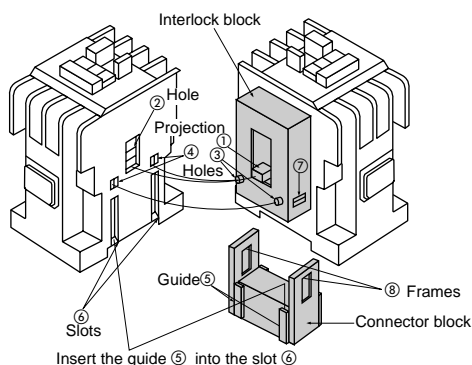
**Mechanical interlock units and power connection kit for reversing**

This SZ-RM unit consists of an interlock block, which mechanically prevents the simultaneous engagement of forward and reverse contactors, and a connector block. A reversing contactor can be easily assembled with this unit at site. An interlock mechanism prevents the engagement of 2 contactors at the same time.

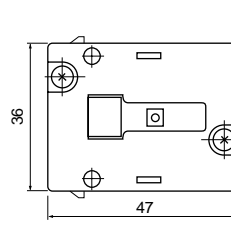
Interlock unit		Power connection kit for reversing		
Type	Used with	Type	Color	Used with
<b>SZ-RM</b>	SC-03 to N3	<b>SZ-RW1</b>	Blue	SC-03, SC-0
		<b>SZ-RW2</b>	Black	SC-05
		<b>SZ-RW3</b>	Yellow	SC-4-0, SC-4-1
		<b>SZ-RW4</b>	White	SC-5-1
		<b>SZ-RW5</b>	White	SC-N1, SC-N2
		<b>SZ-RW6</b>	White	SC-N2S, SC-N3

**■ Mounting methods**

1. Position an interlock block between two contactors so that the tall, square projections ① on the movable portions on either side of the interlock block fit into the square holes ② on the sides of the contactors. The short, round projections ③ on the sides of the interlock block should fit into the round holes ④ on the sides of the contactors.
2. Insert the guides ⑤ on the ends of the connector block into the slots ⑥ in the sides of the contactors and push the frames ⑦ of the projecting windows on the ends of the connector block catch firmly on the hook-like projections ⑧ on the interlock block.
3. After connecting the contactors to each other, make sure that they operate smoothly by pressing down the movable manual operator one at a time.
4. To separate the contactors, insert the end of a flat-bladed screwdriver under the frame ⑦ of one of the projecting windows on the connector block and lift it up and over the hook-like projection ⑧ on the interlock block. While lifting up on the frame ⑦, push against the connector block to eject it from between the contactors.

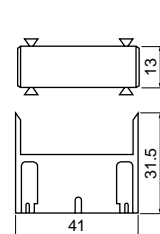


**■ Dimensions, mm**  
**Interlock block**



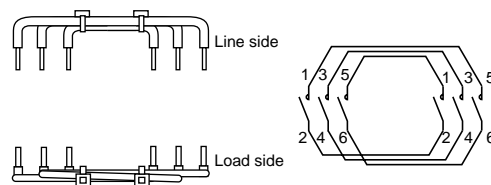
Mass: 18g

**Connector block**



Mass: 4.2g

**Power connection kit for reversing**



**Cautions on attaching interlock unit to SC-03 and SC-0**

Insert the protruded portion of the interlock unit into the upper (not lower) part of two slots on the side of the contactor by pressing the manual operator of the contactor.

