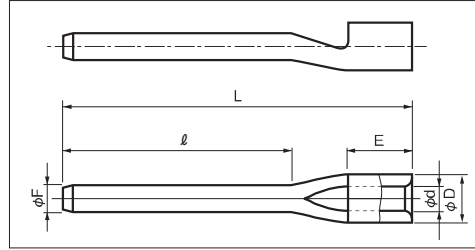
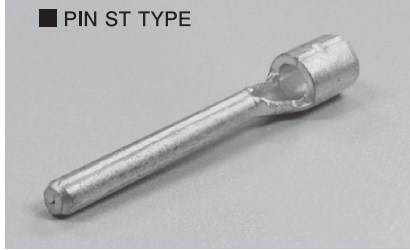


PIN TERMINALS (TC TYPE)

A

■ PIN ST TYPE

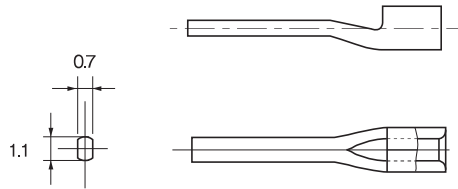


RoHS 10
See page 2

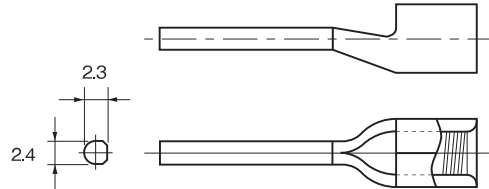
PART NUMBER	DIMENSIONS mm						WIRE RANGE			TOOL No		STD QTY/BOX
	φF	l	L	E	φD	φd	SOLID mm	STRAINED mm ²	AWG	HAND TOOL No. TOOL BODY No. DIES No.		
TC 0.75-13.5K-ST △	* (1)	13.5	21.5	4.5	2.5	1.4	-	0.3 ∩ 0.75	22-18	NH 69 NA 10 N10 05 NA 3 N3 69	1,000 (100×10)	
TC 1.25-11S-ST	1.5	11.0	19.5	4.5	3.4	1.7	0.57 ∩ 1.44	0.25 ∩ 1.65	22-16	NH 1 NH 69 NA 10 N10 01 NA 3 N3 7	1,000 (100×10)	
TC 1.25-11V-ST	1.9											
TC 1.25-16V-ST	1.9											
TC 1.25-18S-ST	1.5											
TC 1.25-20S-ST	20.0											
TC 2-11V-ST	1.9	11.0	19.5	4.5	4.2	2.3	1.14 ∩ 1.82	1.04 ∩ 2.63	16-14	NH 1 NH 9 NH 69 NA 10 N10 02 NA 3 N3 7	1,000 (100×10)	
TC 2-16V-ST		16.0	24.5									
TC 2-18V-ST		18.0	26.5									
TC 5.5-15-ST	1.9	15.0	26.5	6.5	5.6	3.4	1.82 ∩ 2.89	2.63 ∩ 6.64	12-10	NH 1 NH 9 NA 10 N10 03 NA 3 N3 7	1,000 (100×10)	
TC 5.5-21-ST		21.0	32.5									
TC 8-18-ST	* (2)	18.0	33.0	8.4	7.1	4.5	2.89 ∩ 3.65	6.64 ∩ 10.52	8	NH 1 NH 9 NOP 60 NPM 60 NA 20 N20 8	500 (50×10)	

No Pin edge chamfering for TC 0.75-13.5K-ST / 1.25-18S-ST / TC 2-18V-ST / 5.5-15-ST / 8-18-ST

Pin shape *(1) TC 0.75-13.5K-ST



* (2) TC 8-18-ST

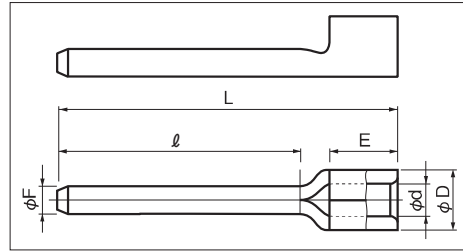


NOTE

- 1) △ : UL
- 2) Refer to page 14 for UL/CSA and proper strip length of wire.
- 3) Refer to page 36 for insulation cap.

PIN TERMINALS (TC TYPE)

A



RoHS 10
See page 2

PART NUMBER		DIMENSIONS mm						WIRE RANGE			TOOL No.		STD QTY/BOX
		ϕF	l	L	E	ϕD	ϕd	SOLID mm	STRANDED mm ²	AWG	HAND TOOL No.	TOOL BODY No. DIES No.	
TC 0.3-9.5	○	1.0	9.5	15.3	4.5	2.2	1.0	-	0.2~0.5 0.3~0.5 UL·CSA USE	24~20 22~20 UL·CSA USE	NH 69 NA 3 N3 70		1,000
TC 1.25-11	○	1.9	11.0	17.5	4.5	3.4	1.7	0.57 1.44	0.25 1.65	22-16	NH 1 NH 69		1,000 (100×10)
TC 1.25-11S	○	1.5											
TC 1.25-16	○	1.9	16.0	22.0	4.5	3.4	1.7	0.57 1.44	0.25 1.65	22-16	NH 1 NH 69		1,000 (100×10)
TC 1.25-16S	○	1.5											
TC 1.25-20	○	1.9	20.0	26.0	4.5	3.4	1.7	0.57 1.44	0.25 1.65	22-16	NA 10	N10 01	1,000 (100×10)
TC 1.25-20S	○	1.5									NA 3	N3 7	
TC 2-11	○	1.9	11.0	17.5	4.5	4.2	2.3	1.14 1.82	1.04 2.63	16-14	NH 1 NH 9 NH 69		1,000 (100×10)
TC 2-11S	○	1.5											
TC 2-16	○	1.9	16.0	22.0	4.5	4.2	2.3	1.14 1.82	1.04 2.63	16-14	NH 1 NH 9 NH 69		1,000 (100×10)
TC 2-16S	○	1.5											
TC 2-20	○	1.9	20.0	26.0	4.5	4.2	2.3	1.14 1.82	1.04 2.63	16-14	NA 10	N10 02	1,000 (100×10)
TC 2-20S	○	1.5									NA 3	N3 7	
TC 3.5-11S	○	1.9	11.0	21.0	6.0	5.1	3.0	1.82 2.40	2.63 4.60	12	NH 1 NH 9	NA 10 NA 3 N10 03 N3 7	1,000 (100×10)
TC 5.5-11	○	2.7	11.0	21.0	6.5	5.6	3.4	1.82 2.89	2.63 6.64	12-10	NH 1 NH 9	NA 10 NA 3 N10 03 N3 7	1,000 (100×10)

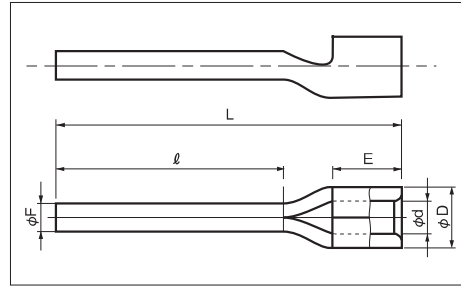
NOTE

- : UL, CSA
- Refer to page 14 for UL/CSA and proper strip length of wire.
- Refer to page 36 for insulation cap.

PIN TERMINALS WITH INSULATION CAPS

A

Pin terminal & Insulation cap is packed in package.



TERMINAL **RoHS 10**
CAP **RoHS 10**
See page 2

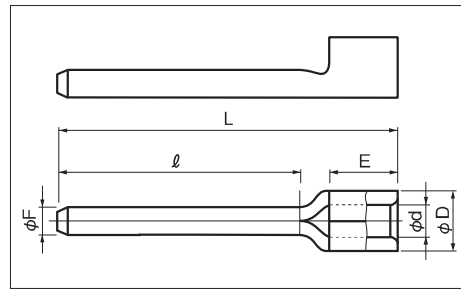
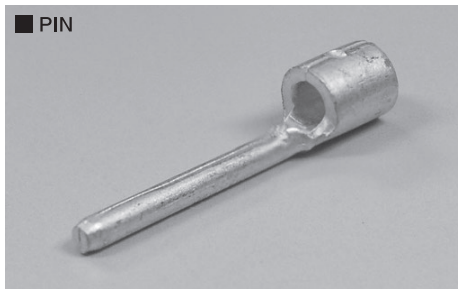
PART NUMBER	DIMENSIONS mm						WIRE RANGE			TOOL No. HAND TOOL No.		CAP COLOR	STD QTY/BOX
	ϕF	l	L	E	ϕD	ϕd	SOLID mm	STRANDED mm ²	AWG	TOOL BODY No.	DIES No.		
TC 1.25-13.5V-ST-C	1.9	13.5	22.0	4.5	3.4	1.7	0.57	0.25	22-16	NH 1 NH 69		Red Translucent	1000 (100×10)
TC 2-13.5V-ST-C							1.44	1.65		NA 10 NA 3	N10 01 N3 7		
TC 2-16V-ST-C		16.0	24.5	6.5	5.6	3.4	1.14	1.04	16-14	NH 1 NH 9 NH 69		Green Translucent	
TC 5.5-15-ST-C		15.0	26.5				1.82	2.63		NA 10 NA 3	N10 02 N3 7		
TC 5.5-21-ST-C		21.0	32.5	2.89	6.64	12-10	NH 1 NH 9		Yellow Translucent	500 (50×10)			
TC 8-18-ST-C	See P28	18.0	33.0	8.4	7.1	4.5	2.89	6.64			8	NH 1 NH 9 NOP 60 NOM 60	
							3.65	10.52		NA 20	N20 8		

Ratings within rated temperature of the cap

Rated voltage / current : TC 1.25-13.5V-ST-C TC 2-13.5V-ST-C [600V / 20A]

TC 5.5-15ST-C TC 5.5-21ST-C [600V / 37A] TC 8-18ST-C [600V / 48A]

Material of cap : P.V.C. UL94V-0



TERMINAL **RoHS 10**
CAP **RoHS 10**
See page 2

PART NUMBER	DIMENSIONS mm						WIRE RANGE		TOOL No. HAND TOOL No.		CAP COLOR	STD QTY/BOX
	ϕF	l	L	E	ϕD	ϕd	STRANDED mm ²	AWG	TOOL BODY No.	DIES No.		
TC 235-16S-C	1.9	16.0	25.0	6.0	5.6	3.0	2.0~3.5	14-12	NH 1 NH 9		Yellow Translucent	500 (100×5)
									NA 10 NA 3	N10 03 N3 7		

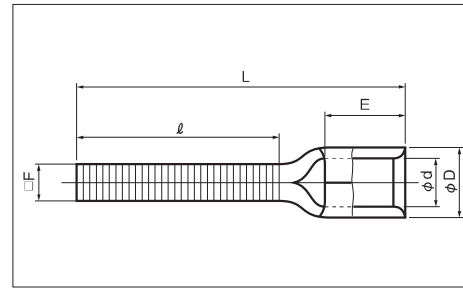
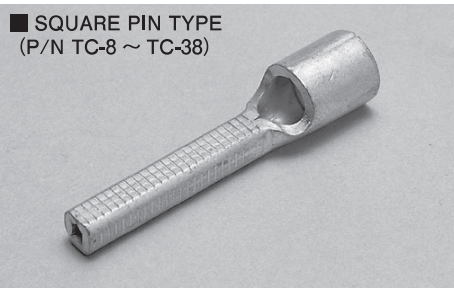
Ratings within rated temperature of the cap

Rated voltage / current : 600V/20A

Material of cap : P.V.C. UL94V-0

PIN TERMINALS (TC TYPE) with CAP

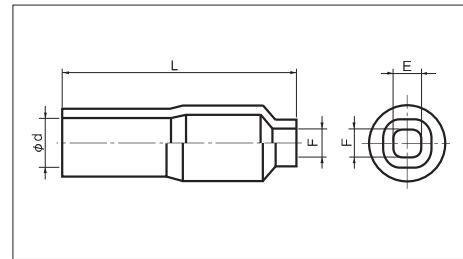
A



TERMINAL **RoHS 10**
See page 2

Supplied with cap.

PART NUMBER	DIMENSIONS mm						WIRE RANGE			TOOL No.		STD QTY/BOX
	□F	ℓ	L	E	φD	φd	SOLID mm	STRANDED mm ²	AWG	HAND TOOL No. TOOL BODY No. DIES No.		
TC 8-S-C	3.5	20.0	33.5	8.4	7.1	3.5	1.82	2.63	12-10	NH 1, NH 9 NOP 60, NOM 60	50	
TC 8-C						4.5	2.89	6.64				8
TC 14S-C	3.5	25.0	40.5	10.0	9.0	5.8	-	10.52	6	NH 9, NOP 60 NOM 60, NOP 150HA NOM 150	50	
TC 14-C	4.5							16.78				NA 20 N20 08
TC 22S-C	3.5	28.0	47.0	12.0	11.5	7.7	-	16.78	4	NOP 60 NOM 60 NOP 150HA NOM 150	50	
TC 22-C	6.5							26.66				NA 20 N20 14
TC 38-C	6.9	30.0	50.0	13.0	13.3	9.4	-	26.66	2	NA 20 N20 22 N20 38 N20 60	50	
TC 60-C	6.9	30.0	60.0	18.5	15.6	11.4	-	42.42				60.57



CAP **RoHS 10**
See page 2

Dimensions are of caps enclosed with Pin terminals. Sold only with Pin terminals.

PART NUMBER	DIMENSIONS mm				APPLICABLE TERMINAL PART NUMBER
	φd	E	F	L	
VC 8	6.5	3.5	3.5	30.5	TC 8S TC 8
VC 14	8.5	4.5	4.5	37	TC 14S TC 14
VC 22S	10	3.5	3.5	53	TC 22S
VC 22	10	6.5	6.5	50	TC 22
VC 38	12	6.9	6.9	58	TC 38
VC 60	14.5	6.9	6.9	61	TC 60

- MATERIAL : P.V.C.
 - RATED VOLTAGE : 600V
 - COLOR : Transparent
 - MAX. TEMPERATURE : 60°C
- NOTE** Translucency may not remain when applied to EP rubber insulated wire.