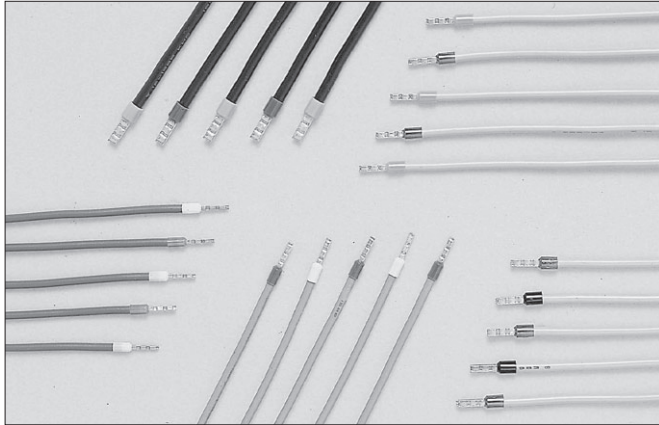


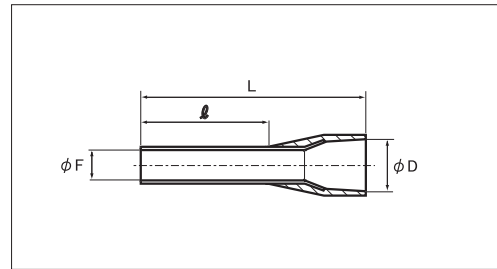
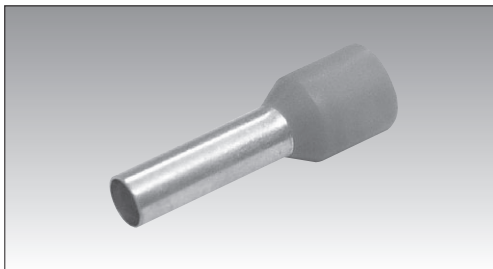
WIRE ENDS



SPECIFICATIONS

- MATERIAL : SLEEVE : Copper (Tin-plated)
INSULATOR : Polypropylene
- STANDARD : DIN46228/4 (Except for ※)

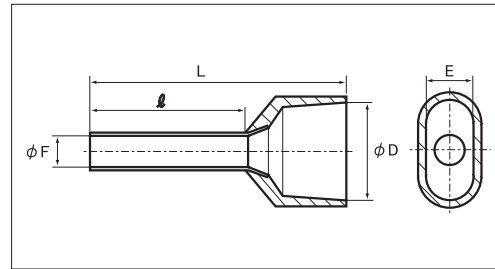
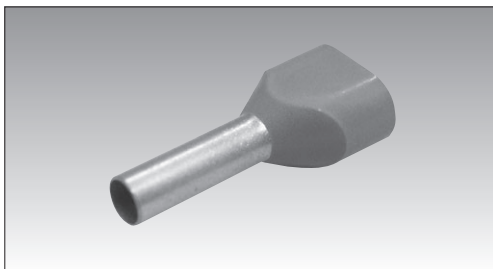
■ SINGLE WIRE



RoHS10
See page 2

PART NUMBER	DIMENSIONS mm				WIRE RANGE		TOOL No. HAND TOOL No.	COLOR	STD QTY/BAG
	ϕF	ϕD	l	L	STRANDEDmm ²	AWG			
TE 0.14-8 ※	0.6	1.6	8.0	13.0	0.13	26	NH 89	GRAY	500
TE 0.25-8 ※	0.8	1.9	8.0	13.0	0.20	24		YELLOW	
TE 0.34-8 ※	0.8	2.0	8.0	13.0	0.2~0.3	24-22		TURQUOISE	
TE 0.5-8	1.0	2.6	8.0	14.0	0.3~0.5	22-20	NH 79A NH 89	WHITE	
TE 0.5-10			10.0	16.0				0.75	
TE 0.75-8	1.2	2.8	8.0	14.0	1.0	18			
TE 0.75-10			10.0	16.0					
TE 1.0-8	1.4	3.0	8.0	14.0	1.5	16		BLACK	
TE 1.0-10			10.0	16.0					
TE 1.5-8	1.7	3.5	8.0	14.0	2.5	14	GRAY/BLUE		
TE 1.5-10			10.0	16.0					
TE 2.5-8	2.2	4.2	8.0	14.0	4.0	12	BLUE		
TE 2.5-10			10.0	16.0			ORANGE		
TE 2.5-12			12.0	18.0			GREEN		
TE 4.0-10	2.8	4.8	10.0	17.0	6.0	10		200	
TE 6.0-12	3.5	6.3	12.0	20.0				100	

■ TWIN WIRE



RoHS10
See page 2

PART NUMBER	DIMENSIONS mm					WIRE RANGE		TOOL No. HAND TOOL No.	COLOR	STD QTY/BAG
	ϕF	ϕD	E	l	L	STRANDEDmm ²	AWG			
TEW 0.5-8	1.5	4.9	2.5	8.0	15.0	0.5×2	22×2	NH 79A	WHITE	500
TEW 0.75-8	1.8	5.2	2.6		16.0	0.75×2	20×2		BLUE/GRAY	
TEW 1.0-8	2.0	5.8	3.2		15.0	1.0×2	18×2		RED	
TEW 1.5-8	2.3	6.5	3.6		16.0	1.5×2	16×2		BLACK	
TEW 2.5-9	2.9	7.5	4.3	9.0	18.0	2.5×2	14×2		GRAY/BLUE	