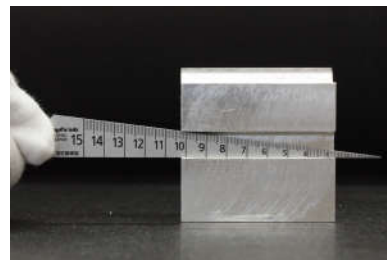
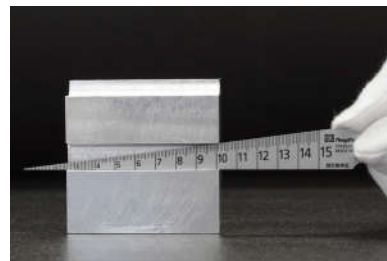
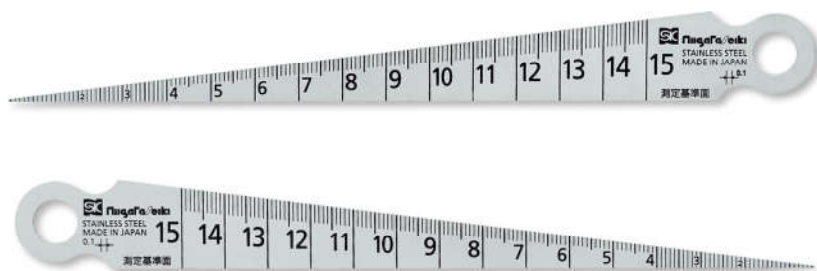


RIGHT ANGLE TAPER GAUGE



HOW TO MOVE



USE

- For measurement of groove and gap etc.

MATERIAL

- Hardened stainless steel

FEATURES

- Taper gauge specialized in inner width measurements
- One side of gauge rests secure along with the workpiece for a stable measurement
- The scale is designed to be read easily from the side when the gap to be measured is not visible from above

Order No.	Model No.	Measuring Range (mm)	Accuracy (mm)	Graduation (mm)	Taper Angle	Full Length (mm)	Weight
007004	TPG-700T	1~15	±0.05	0.1	7° 9' 10"	148,5	10g



BLOCK GAUGE

PIN GAUGE

PIN VISE

PIN GAUGE ACCESSORIES

RING GAUGE

PLUG GAUGE

LIMIT GAUGE

THICKNESS GAUGE

TAPER GAUGE

WELDING GAUGE

OTHER GAUGES

TAPER GAUGE



HOW TO MOVE

Clip style plastic case



Wide Measuring Range 1-29mm ▶ Taper Gauge TPG-267M P94	Slide case for convenient carrying ▶ Slide Taper Gauge P95
Made of polycarbonate ▶ Plastic Taper Gauge KAIKAN P95	130mm scale set ▶ Taper Gauge with Scale P96



Perfect for carrying in shirt pocket

USE

- For measurement of groove, gap, hole diameter etc.

MATERIAL

- Hardened stainless steel
- Hardness: HV480

FEATURES

- Satin finish
- Back side- scale graduated and hole diameter conversion table
- Pocket clip style carrying case
- Front - Width scale, Back - Length scale

Order No.	Model No.	Standard	Measuring Range (mm)	Accuracy (mm)	Graduation (mm)	Taper Angle	Full Length (mm)	Thickness (mm)	Weight
007008	TPG-700AC	#700 1-15 with Plastic case	1 ~ 15	± 0.05	0.1	7° 9' 10"	148,5	1.2	10g