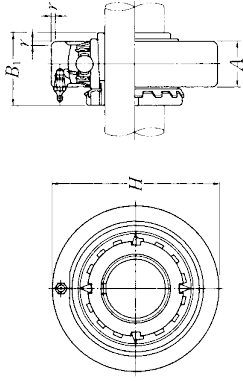


UKCX

Cartridge unit, cast housing
Adapter type



Shaft dia. mm inch	Unit number ⁽¹⁾ / ₍₂₎ / ₍₃₎	Nominal dimensions mm inch				Bearing number	Housing number	Mass of unit kg lb
		H	A	r	B ₁			
20 ³ / ₄	UKCX05D1;H2305X	90	27	2	35	UKX05D1;H2305X	CX05D1	1.1
	UKCX05D1;HE2305	3.5433	1 ¹ / ₁₆	0.079	1.378	UKX05D1;HE2305	CX05D1	2.4
25 ⁷ / ₈ 1	UKCX06D1;H2306X	100	30	2.5	38	UKX06D1;H2306X	CX06D1	1.4
	UKCX06D1;HS2306	3.9370	1 ³ / ₁₆	0.098	1.496	UKX06D1;HS2306	CX06D1	3.1
	UKCX06D1;HE2306X					UKX06D1;HE2306X	CX06D1	
30 ¹ / ₈	UKCX07D1;H2307X	110	34	2.5	43	UKX07D1;H2307X	CX07D1	1.8
	UKCX07D1;HS2307	4.3307	1 ¹¹ / ₃₂	0.098	1.693	UKX07D1;HS2307	CX07D1	4.0
35 ¹ / ₄ ¹ / ₂	UKCX08D1;H2308X	120	38	2.5	46	UKX08D1;H2308X	CX08D1	2.5
	UKCX08D1;HE2308X	4.7244	1 ¹ / ₂	0.098	1.811	UKX08D1;HE2308X	CX08D1	5.5
	UKCX08D1;HS2308X					UKX08D1;HS2308X	CX08D1	
40 ¹ / ₂ ¹ / ₂ ¹ / ₂	UKCX09D1;H2309X	120	38	2.5	50	UKX09D1;H2309X	CX09D1	2.2
	UKCX09D1;HA2309					UKX09D1;HA2309	CX09D1	
	UKCX09D1;HE2309X	4.7244	1 ¹ / ₂	0.098	1.969	UKX09D1;HE2309X	CX09D1	4.9
	UKCX09D1;HS2309X					UKX09D1;HS2309X	CX09D1	
45 ¹ / ₈ ¹ / ₁₆ ¹ / ₁₆ ¹ / ₄	UKCX10D1;H2310X	130	40	2.5	55	UKX10D1;H2310X	CX10D1	2.7
	UKCX10D1;HS2310					UKX10D1;HS2310	CX10D1	
	UKCX10D1;HA2310	5.1181	1 ³⁷ / ₆₄	0.098	2.165	UKX10D1;HA2310	CX10D1	6.0
	UKCX10D1;HE2310X					UKX10D1;HE2310X	CX10D1	
50 ¹ / ₂ ¹ / ₁₆ 2	UKCX11D1;H2311X	150	42	3	59	UKX11D1;H2311X	CX11D1	4.0
	UKCX11D1;HS2311					UKX11D1;HS2311	CX11D1	
	UKCX11D1;HA2311	5.9055	2 ¹ / ₃₂	0.118	2.323	UKX11D1;HA2311	CX11D1	8.8
	UKCX11D1;HE2311XY					UKX11D1;HE2311XY	CX11D1	
55 ² / ₈	UKCX12D1;H2312X	160	44	3	62	UKX12D1;H2312X	CX12D1	3.9
	UKCX12D1;HS2312	6.2992	1 ⁴⁷ / ₆₄	0.118	2.441	UKX12D1;HS2312	CX12D1	8.6

Notes (1) These numbers indicate relubricatable type. If maintenance free type is needed, please order without suffix "D1".

(2) Adapter number with suffix "X" means a narrow slot type adapter sleeve.

In this case the lock washer with the straight inner prong should be used.

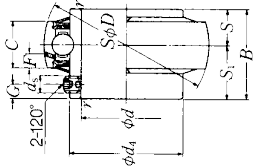
(3) For HE2311XY, screw thread pitch different from the standard is applied, because of the thin thread section of sleeve.

To distinguish it, a suffix "Y" is added.

Remarks Please refer to page A21 for size of grease fitting.

UC2

Ball bearings Set screw type



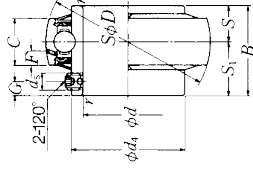
Shaft dia. mm inch	Bearing (1) number	Nominal dimensions										
		d	D	B	C	r	S	S ₁	G	d _s	d _i	F
1/2	UC201D1	12	47	31	17	0.6	12.7	18.3	4.5	M5×0.8	29.6	4.7
	UC201-008D1	0.5000	1.8504	1.2205	0.6693	0.024	0.500	0.720	0.177	No.10-32UNF	1.1654	0.185
	UC202D1	15	47	31	17	0.6	12.7	18.3	4.5	M5×0.8	29.6	4.7
9/16 5/8	UC202-009D1	0.5625	1.8504	1.2205	0.6693	0.024	0.500	0.720	0.177	No.10-32UNF	1.1654	0.185
	UC202-010D1	0.6250										
17 11/16	UC203D1	17	47	31	17	0.6	12.7	18.3	4.5	M5×0.8	29.6	4.7
	UC203-011D1	0.6875	1.8504	1.2205	0.6693	0.024	0.500	0.720	0.177	No.10-32UNF	1.1654	0.185
20 3/4	UC204D1	20	47	31	17	1	12.7	18.3	4.5	M5×0.8	29.6	4.7
	UC204-012D1	0.7500	1.8504	1.2205	0.6693	0.039	0.500	0.720	0.177	No.10-32UNF	1.1654	0.185
	UC205D1	25	52	34.1	17	1	14.3	19.8	5	M5×0.8	33.9	4.5
1/8 7/16 15/16 1	UC205-013D1	0.8125										
	UC205-014D1	0.8750										
	UC205-015D1	0.9375	2.0472	1.3425	0.6693	0.039	0.563	0.780	0.197	No.10-32UNF	1.3346	0.177
	UC205-100D1	1.0000										
	UC206D1	30	62	38.1	19	1	15.9	22.2	5	M6×0.75	40.8	4.6
1/16 1 1/8 1 1/4	UC206-101D1	1.0625										
	UC206-102D1	1.1250										
	UC206-103D1	1.1875	2.4409	1.5000	0.7480	0.039	0.626	0.874	0.197	1/4-28UNF	1.6063	0.181
	UC206-104D1	1.2500										
	UC207D1	35	72	42.9	20	1.5	17.5	25.4	6	M6×0.75	46.8	4.6
1/4 1 1/8 1 3/8 1 1/2	UC207-104D1	1.2500										
	UC207-105D1	1.3125										
	UC207-106D1	1.3750	2.8346	1.6890	0.7874	0.059	0.689	1.000	0.236	1/4-28UNF	1.8425	0.181
	UC207-107D1	1.4375										
	UC208D1	40	80	49.2	21	1.5	19	30.2	8	M8×1	53	4.5
1 1/2 1 9/16	UC208-108D1	1.5000	3.1496	1.9370	0.8268	0.059	0.748	1.189	0.315	5/16-24UNF	2.0866	0.177
	UC208-109D1	1.5625										
45 1 5/8 1 11/16 1 3/4	UC209D1	45	85	49.2	22	1.5	19	30.2	8	M8×1	57.5	4.9
	UC209-110D1	1.6250	3.3465	1.9370	0.8661	0.059	0.748	1.189	0.315	5/16-24UNF	2.2638	0.193
	UC209-111D1	1.6875										
	UC209-112D1	1.7500										
	UC209-113D1	1.8125										

Note (1) These numbers indicate relubricatable type. If maintenance free type is needed, please order without suffix "D1".

Basic load ratings	N	Mass	
		kg	lb
dynamic C _r	12 800	6 650	0.21
	2 890	1 500	0.46
static C _{0r}	12 800	6 650	0.20
	2 890	1 500	0.44
dynamic C _r	12 800	6 650	0.18
	2 890	1 500	0.39
static C _{0r}	12 800	6 650	0.17
	2 890	1 500	0.39
dynamic C _r	14 000	7 850	0.20
	3 150	1 770	0.51
static C _{0r}	14 000	7 850	0.53
	3 150	1 770	0.46
dynamic C _r	19 500	11 300	0.32
	4 400	2 540	0.77
static C _{0r}	19 500	11 300	0.82
	4 400	2 540	0.73
dynamic C _r	25 700	15 300	0.46
	5 750	3 450	1.21
static C _{0r}	25 700	15 300	1.15
	5 750	3 450	1.08
dynamic C _r	29 100	17 800	0.64
	6 550	4 000	1.52
static C _{0r}	29 100	17 800	1.46
	6 550	4 000	1.46
dynamic C _r	32 500	20 400	0.68
	7 350	4 600	1.76
static C _{0r}	32 500	20 400	1.68
	7 350	4 600	1.57

UC2

Ball bearings Set screw type



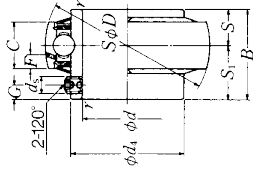
Shaft dia. mm inch	Bearing (1) number	Nominal dimensions										
		d	D	B	C	r min.	S	S ₁	G	d ₅	d ₄	F
50	UC210D1	50	90	51.6	24	1.5	19	32.6	9	M8×1	62.4	5.9
1 ¹⁵ / ₁₆	UC210-113D1	1.8125										
1 ⁷ / ₈	UC210-114D1	1.8750										
1 ⁹ / ₁₆	UC210-115D1	1.9375	3.5433	2.0315	0.9449	0.059	0.748	1.283	0.354	⁵ / ₁₆ -24UNF	2.4567	0.232
2	UC210-200D1	2.0000										
55	UC211D1	55	100	55.6	25	2	22.2	33.4	9	M8×1	69	6.0
2	UC211-200D1	2.0000										
2 ¹ / ₁₆	UC211-201D1	2.0625	3.9370	2.1890	0.9843	0.079	0.874	1.315	0.354	⁵ / ₁₆ -24UNF	2.7165	0.236
2 ³ / ₁₆	UC211-202D1	2.1250										
2 ³ / ₈	UC211-203D1	2.1875										
60	UC212D1	60	110	65.1	27	2	25.4	39.7	10	M10×1.25	77	6.2
2 ¹ / ₄	UC212-204D1	2.2500										
2 ⁵ / ₁₆	UC212-205D1	2.3125										
2 ⁹ / ₁₆	UC212-206D1	2.3750	4.3307	2.5630	1.0630	0.079	1.000	1.563	0.394	³ / ₈ -24UNF	3.0315	0.244
2 ⁷ / ₈	UC212-207D1	2.4375										
65	UC213D1	65	120	65.1	32	2	25.4	39.7	10	M10×1.25	82.5	8.7
2 ¹ / ₂	UC213-208D1	2.5000	4.7244	2.5630	1.2598	0.079	1.000	1.563	0.394	³ / ₈ -24UNF	3.2480	0.343
2 ⁵ / ₁₆	UC213-209D1	2.5625										
70	UC214D1	70	125	74.6	33	2	30.2	44.4	12	M10×1.25	87	8.8
2 ⁷ / ₈	UC214-210D1	2.6250										
2 ¹¹ / ₁₆	UC214-211D1	2.6875	4.9213	2.9370	1.2992	0.079	1.189	1.748	0.472	³ / ₈ -24UNF	3.4252	0.346
2 ³ / ₄	UC214-212D1	2.7500										
75	UC215D1	75	130	77.8	34	2	33.3	44.5	12	M10×1.25	93	9.0
2 ⁹ / ₁₆	UC215-213D1	2.8125										
2 ⁷ / ₈	UC215-214D1	2.8750	5.1181	3.0630	1.3386	0.079	1.311	1.752	0.472	³ / ₈ -24UNF	3.6614	0.354
2 ⁹ / ₁₆	UC215-215D1	2.9375										
3	UC215-300D1	3.0000										
80	UC216D1	80	140	82.6	35	2.5	33.3	49.3	12	M10×1.25	98.1	9.5
3 ¹ / ₁₆	UC216-301D1	3.0625										
3 ¹ / ₈	UC216-302D1	3.1250	5.5118	3.2520	1.3780	0.098	1.311	1.941	0.472	³ / ₈ -24UNF	3.8622	0.374
3 ³ / ₁₆	UC216-303D1	3.1875										

Note (1) These numbers indicate relubricatable type. If maintenance free type is needed, please order without suffix "D1".

Basic load ratings	N lbf dynamic C _r	kg lb static C _{0r}	Mass
	35 000	23 200	0.78
			2.03
	7 900	5 200	1.92
			1.81
			1.69
	43 500	29 200	1.04
			2.71
	9 750	6 550	2.60
			2.46
			2.34
	52 500	36 000	1.46
			3.66
	11 800	8 150	3.50
			3.33
			3.17
	57 500	40 000	1.86
			4.26
	12 900	9 000	4.09
	62 000	44 000	2.10
			5.09
	14 000	9 900	4.87
			4.65
	66 000	49 500	2.34
			5.73
	14 900	11 100	5.49
			5.25
			4.98
	72 500	53 000	2.78
			6.57
	16 300	11 900	6.28
			6.00

UC2

Ball bearings Set screw type



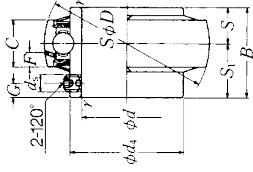
Shaft dia. mm inch	Bearing ⁽¹⁾ number	Nominal dimensions										
		d	D	B	C	r	S	S ₁	G	d _s	d ₁	F
85	UC217D1	85	150	85.7	36	2.5	34.1	51.6	12	M12X1.5	106.4	10.1
3 1/8	UC217-304D1	3.2500										
3 5/16	UC217-305D1	3.3125	5.9055	3.3740	1.4173	0.098	1.343	2.031	0.472	1/2-20UNF	4.1890	0.398
3 7/16	UC217-307D1	3.4375										
90	UC218D1	90	160	96	37	2.5	39.7	56.3	12	M12X1.5	111.6	9.8
3 1/2	UC218-308D1	3.5000	6.2992	3.7795	1.4567	0.098	1.563	2.217	0.472	1/2-20UNF	4.3937	0.386

Note ⁽¹⁾ These numbers indicate relubricatable type. If maintenance free type is needed, please order without suffix "D1".

Basic load ratings		Mass	
N lbf	kg lb	dynamic	static
C _r	C _{0r}	C _r	C _{0r}
83 500	64 000	3.54	7.92
18 700	14 300	7.60	6.97
96 000	71 500	4.40	9.88
21 600	16 100		

UC3

Ball bearings Set screw type



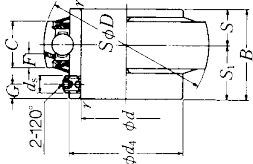
Shaft dia. mm inch	Bearing (1) number	Nominal dimensions										
		d	D	B	C	r min.	S	S ₁	G	d _s	d ₄	F
25	UC305D1	25	62	38	20	1.5	15	23	6	M6×0.75	36.8	5.0
	UC305-013D1	0.8125										
	UC305-014D1	0.8750										
	UC305-015D1	0.9375	2.4409	1.4961	0.7874	0.059	0.591	0.906	0.236	1/4-28UNF	1.4488	0.197
1	UC305-100D1	1.0000										
30	UC306D1	30	72	43	23	1.5	17	26	6	M6×0.75	44.9	5.9
	UC306-101D1	1.0625										
	UC306-102D1	1.1250	2.8346	1.6929	0.9055	0.059	0.669	1.024	0.236	1/4-28UNF	1.7677	0.232
	UC306-103D1	1.1875										
35	UC307D1	35	80	48	25	2	19	29	8	M8×1	49.4	6.8
	UC307-104D1	1.2500										
	UC307-105D1	1.3125	3.1496	1.8898	0.9843	0.079	0.748	1.142	0.315	5/16-24UNF	1.9449	0.268
	UC307-106D1	1.3750										
	UC307-107D1	1.4375										
40	UC308D1	40	90	52	27	2	19	33	10	M10×1.25	56	7.4
	UC308-108D1	1.5000	3.5433	2.0472	1.0630	0.079	0.748	1.299	0.394	3/8-24UNF	2.2047	0.291
	UC308-109D1	1.5625										
45	UC309D1	45	100	57	29	2	22	35	10	M10×1.25	63.5	7.4
	UC309-110D1	1.6250										
	UC309-111D1	1.6875	3.9370	2.2441	1.1417	0.079	0.866	1.378	0.394	3/8-24UNF	2.5000	0.291
	UC309-112D1	1.7500										
50	UC310D1	50	110	61	32	2.5	22	39	12	M12×1.5	70.6	8.1
	UC310-113D1	1.8125										
	UC310-114D1	1.8750	4.3307	2.4016	1.2598	0.098	0.866	1.535	0.472	1/2-20UNF	2.7795	0.319
	UC310-115D1	1.9375	1.9375									

Note (1) These numbers indicate relubricatable type. If maintenance free type is needed, please order without suffix "D1".

Basic load ratings	N lbf dynamic C _r	kg lb static C _{0r}	Mass
	21 200	10 900	0.35
	4 750	2 460	0.88
	26 700	15 000	0.84
	6 000	3 400	0.79
	33 500	19 100	0.77
	7 500	4 300	0.56
	40 500	24 000	1.34
	9 150	5 400	1.28
	53 000	32 000	1.63
	11 900	7 200	1.57
	62 000	38 500	1.50
	13 900	8 600	0.70
			1.70
			2.23
			2.14
			3.06
			2.98
			2.87
			1.68
			3.95
			3.84
			3.70

UC3

Ball bearings Set screw type

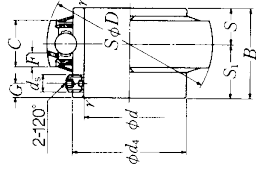


Shaft dia. mm inch	Bearing (°) number	Nominal dimensions										Basic load ratings		Mass		
		d	D	B	C	r min.	S	S ₁	G	d _s	d ₁	F	N lbf dynamic C _r	static C _{0r}	kg	lb
55	UC311D1	55	120	66	34	2.5	25	41	12	M12X1.5	76.6	8.5	71 500	45 000	2.08	4.96
2	UC311-200D1	2.0000														
2 ¹ / ₁₆	UC311-201D1	2.0625	4.7244	2.5984	1.3386	0.098	0.984	1.614	0.472	½-20UNF	3.0157	0.335	16 100	10 100	4.81	4.67
2 ¹ / ₈	UC311-202D1	2.1250														
2 ³ / ₁₆	UC311-203D1	2.1875														
60	UC312D1	60	130	71	36	2.5	26	45	12	M12X1.5	82.7	9.0	82 000	52 000	2.60	6.06
2 ¹ / ₄	UC312-204D1	2.2500														
2 ³ / ₁₆	UC312-205D1	2.3125	5.1181	2.7953	1.4173	0.098	1.024	1.772	0.472	½-20UNF	3.2559	0.354	18 400	11 700	5.89	5.68
2 ⁷ / ₁₆	UC312-206D1	2.3750														
2 ⁷ / ₈	UC312-207D1	2.4375														
65	UC313D1	65	140	75	39	2.5	30	45	12	M12X1.5	88.2	10.1	92 500	60 000	3.25	7.36
2 ¹ / ₂	UC313-208D1	2.5000	5.5118	2.9528	1.5354	0.098	1.181	1.772	0.472	½-20UNF	3.4724	0.398	20 800	13 400	7.14	
2 ⁹ / ₁₆	UC313-209D1	2.5625														
70	UC314D1	70	150	78	41	2.5	33	45	12	M12X1.5	94.8	10.5	104 000	68 000	3.86	9.06
2 ⁵ / ₈	UC314-210D1	2.6250														
2 ¹¹ / ₁₆	UC314-211D1	2.6875	5.9055	3.0709	1.6142	0.098	1.299	1.772	0.472	½-20UNF	3.7323	0.413	23 400	15 300	8.82	8.60
2 ³ / ₄	UC314-212D1	2.7500														
75	UC315D1	75	160	82	43	2.5	32	50	14	M14X1.5	101.3	11.0	113 000	77 000	4.70	11.0
2 ¹³ / ₁₆	UC315-213D1	2.8125														
2 ⁷ / ₈	UC315-214D1	2.8750	6.2992	3.2283	1.6929	0.098	1.260	1.969	0.551	⅝-18UNF	3.9882	0.433	25 500	17 400	10.7	10.5
2 ¹⁵ / ₁₆	UC315-215D1	2.9375														
3	UC315-300D1	3.0000														
80	UC316D1	80	170	86	45	2.5	34	52	14	M14X1.5	107.9	11.4	123 000	86 500	5.60	12.6
3 ¹ / ₁₆	UC316-301D1	3.0625														
3 ¹ / ₈	UC316-302D1	3.1250	6.6929	3.3858	1.7717	0.098	1.339	2.047	0.551	⅝-18UNF	4.2480	0.449	27 600	19 500	12.3	12.1
3 ³ / ₁₆	UC316-303D1	3.1875														

Note (°) These numbers indicate relubricatable type. If maintenance free type is needed, please order without suffix "D1".

UC3

Ball bearings Set screw type



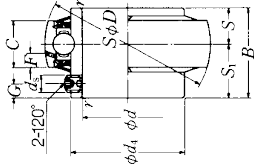
Shaft dia. mm inch	Bearing (1) number	Nominal dimensions										
		d	D	B	C	r	S	S ₁	G	d ₁	F	
85	UC317D1	85	180	96	47	3	40	56	16	M16×1.5	114.4	12.0
3 1/4	UC317-304D1	3.2500										
3 5/16	UC317-305D1	3.3125	7.0866	3.7795	1.8504	0.118	1.575	2.205	0.630	5/8-18UNF	4.5039	0.472
3 7/16	UC317-307D1	3.4375										
90	UC318D1	90	190	96	49	3	40	56	16	M16×1.5	120.9	12.3
3 7/16	UC318-307D1	3.4375	7.4803	3.7795	1.9291	0.118	1.575	2.205	0.630	5/8-18UNF	4.7598	0.484
3 1/2	UC318-308D1	3.5000										
95	UC319D1	95	200	103	51	3	41	62	16	M16×1.5	127.5	12.8
3 5/8	UC319-310D1	3.6250										
3 9/16	UC319-311D1	3.6875	7.8740	4.0551	2.0079	0.118	1.614	2.441	0.630	5/8-18UNF	5.0197	0.504
3 3/4	UC319-312D1	3.7500										
100	UC320D1	100	215	108	55	3	42	66	18	M18×1.5	135.6	13.5
3 5/8	UC320-313D1	3.8125										
3 7/8	UC320-314D1	3.8750	8.4646	4.2520	2.1654	0.118	1.654	2.598	0.709	5/8-18UNF	5.3386	0.531
3 9/16	UC320-315D1	3.9375										
4	UC320-400D1	4.0000										
105	UC321D1	105	225	112	57	3	44	68	18	M18×1.5	142.1	13.9
110	UC322D1	110	240	117	59	3	46	71	18	M18×1.5	151.7	13.9
120	UC324D1	120	260	126	63	3	51	75	18	M18×1.5	165.2	16.0
130	UC326D1	130	280	135	67	4	54	81	20	M20×1.5	178.3	16.9
140	UC328D1	140	300	145	71	4	59	86	20	M20×1.5	190.4	17.7

Note (1) These numbers indicate relubricatable type. If maintenance free type is needed, please order without suffix "D1".

Basic load ratings	dynamic C _r	static C _{0r}	Mass
	133 000	97 000	6.70
			15.2
	29 800	21 800	14.9
			14.2
	143 000	107 000	7.60
			17.3
	32 000	24 100	16.9
			19.1
	153 000	119 000	8.70
			19.9
	34 500	26 600	19.5
			19.1
	173 000	141 000	10.8
			24.7
	39 000	31 500	24.2
			23.8
			23.4
	184 000	153 000	12.2
			14.3
	205 000	179 000	14.3
			18.5
	207 000	185 000	18.5
			23.0
	229 000	214 000	23.0
			28.5
	253 000	246 000	28.5

UCX

Ball bearings Set screw type



Shaft dia. mm inch	Bearing (1) number	Nominal dimensions										
		d	D	B	C	r min.	S	S ₁	G	d ₁	F	
25	UCX05D1	25	62	38.1	19	1	15.9	22.2	5	M6×0.75	40.8	4.6
¹⁹ / ₁₆	UCX05-013D1	0.8125										
⁷ / ₈	UCX05-014D1	0.8750	2.4409	1.5000	0.7480	0.039	0.626	0.874	0.197	¹ / ₄ -28UNF	1.6063	0.181
¹⁵ / ₁₆	UCX05-015D1	0.9375										
1	UCX05-100D1	1.0000										
30	UCX06D1	30	72	42.9	20	1	17.5	25.4	6	M8×1	46.8	4.6
¹ / ₁₆	UCX06-101D1	1.0625										
¹ / ₈	UCX06-102D1	1.1250	2.8346	1.6890	0.7874	0.039	0.689	1.000	0.236	⁵ / ₁₆ -24UNF	1.8425	0.181
¹ / ₄	UCX06-103D1	1.1875										
35	UCX07D1	35	80	49.2	21	1.5	19	30.2	8	M8×1	53	4.5
¹ / ₁₆	UCX07-105D1	1.3125										
¹ / ₈	UCX07-106D1	1.3750	3.1496	1.9370	0.8268	0.059	0.748	1.189	0.315	⁵ / ₁₆ -24UNF	2.0866	0.177
¹ / ₄	UCX07-107D1	1.4375										
40	UCX08D1	40	85	49.2	22	1.5	19	30.2	8	M8×1	57.5	4.9
¹ / ₂	UCX08-108D1	1.5000	3.3465	1.9370	0.8661	0.059	0.748	1.189	0.315	⁵ / ₁₆ -24UNF	2.2638	0.193
¹ / ₁₆	UCX08-109D1	1.5625										
45	UCX09D1	45	90	51.6	24	1.5	19	32.6	9	M10×1.25	62.4	5.9
¹ / ₈	UCX09-110D1	1.6250										
¹ / ₁₆	UCX09-111D1	1.6875	3.5433	2.0315	0.9449	0.059	0.748	1.283	0.354	³ / ₈ -24UNF	2.4567	0.232
¹ / ₄	UCX09-112D1	1.7500										
50	UCX10D1	50	100	55.6	25	1.5	22.2	33.4	9	M10×1.25	69	6.0
¹ / ₈	UCX10-114D1	1.8750	3.9370	2.1890	0.9843	0.059	0.874	1.315	0.354	³ / ₈ -24UNF	2.7165	0.236
¹ / ₁₆	UCX10-115D1	1.9375										
55	UCX11D1	55	110	65.1	27	2	25.4	39.7	10	M10×1.25	77	6.2
² / ₁₆	UCX11-201D1	2.0625										
² / ₈	UCX11-202D1	2.1250	4.3307	2.5630	1.0630	0.079	1.000	1.563	0.394	³ / ₈ -24UNF	3.0315	0.244
² / ₁₆	UCX11-203D1	2.1875										
60	UCX12D1	60	120	65.1	32	2	25.4	39.7	10	M10×1.25	82.5	8.7
² / ₈	UCX12-206D1	2.3750	4.7244	2.5630	1.2598	0.079	1.000	1.563	0.394	³ / ₈ -24UNF	3.2480	0.343
² / ₁₆	UCX12-207D1	2.4375										

Note (1) These numbers indicate relubricatable type. If maintenance free type is needed, please order without suffix "D1".

Basic load ratings	Mass	
	N lbf	kg lb
dynamic C _r	19 500	11 300
static C _{0r}	4 400	2 540
	25 700	15 300
	5 750	3 450
	29 100	17 800
	6 550	4 000
	32 500	20 400
	7 350	4 600
	35 000	23 200
	7 900	5 200
	43 500	29 200
	9 750	6 550
	52 500	36 000
	11 800	8 150
	57 500	40 000
	12 900	9 000
	2.10	4.96
	4.81	4.81