

## UP400RD II

MATERIAL HANDLING | PART TRANSFER

### KEY BENEFITS

- Slim, space-saving shelf-mounted design
- Full six-axis capability provides high flexibility
- Extended reach to service equipment in a large work envelope
- Energy efficient design of DX200 versus previous controller

### SPECIFICATIONS

- 400 kg maximum payload
- 4,909 mm vertical reach
- 3,518 mm horizontal reach
- ±0.5 mm repeatability

### CONTROLLERS



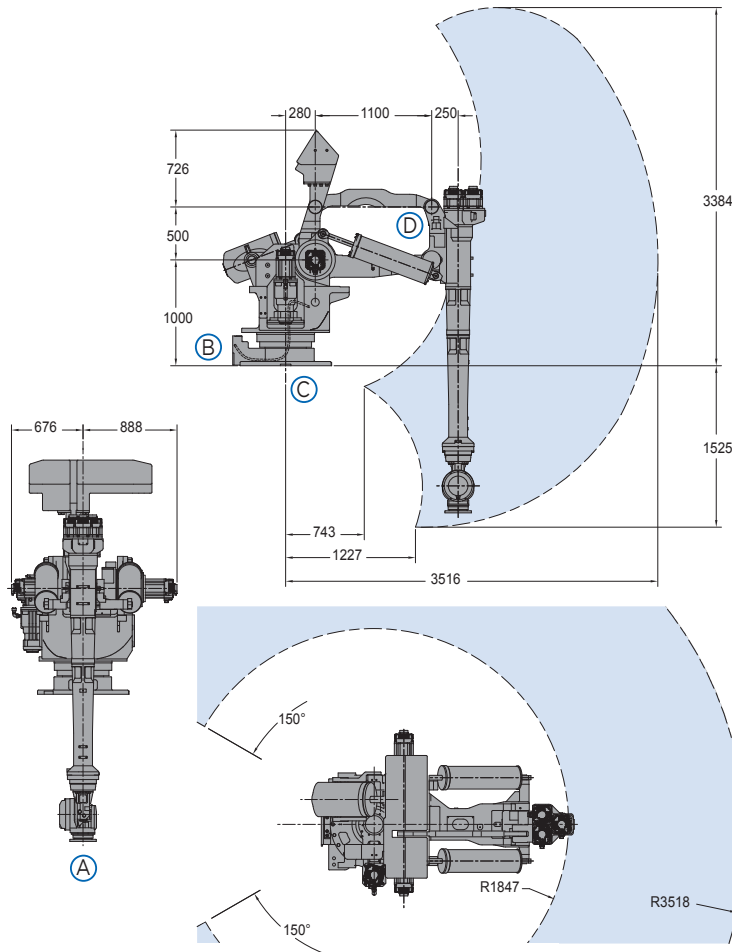
DX200



MLX300\*

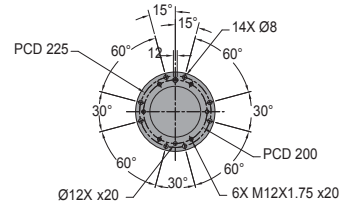
- High-speed, shelf-mounted robot provides flexibility and superior performance in high-payload material handling applications.
- Slender design enables six-axis UP400RD II to work in tight spaces and service multiple processes.
- Fast axis speeds reduce cycle times and increase production throughput.
- Optional MotoSim® EG-VRC, off-line programming software with virtual robot control simplifies programming and simulation.
- Up to 70% less power consumption during motion and 25% savings during idle periods compared to previous models.
- I/O wiring harness and air lines are routed through robot base to upper arm to increase cable life, enhance safety and reduce teaching time.
- Able to handle all types of material including ceramics, composites, metals and polymers.
- Cable installation tube in the base of the robot facilitates fieldbus routing to the robot upper arm and/or gripper.
- Pre-wired for servo gripper which allows a wider range of product handling.
- Pre-wired with internal DeviceNet cable that can be used for robot upper arm and/or gripper.
- Optional high inertia model variant available to effectively handle heavy or unbalanced loads.
- Can eliminate inconsistencies inherent in manual processes for turning, milling and grinding applications.

# UP400RD II ROBOT

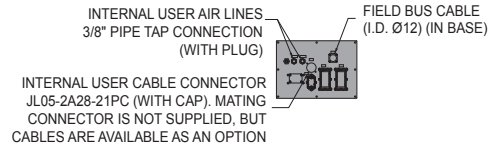


All dimensions are metric (mm) and for reference only.  
Request detailed drawings for all design/engineering requirements.

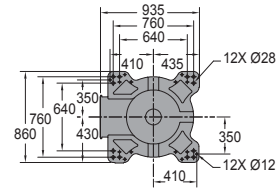
## VIEW A



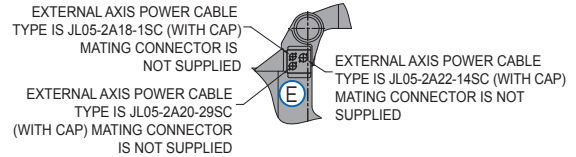
## VIEW B



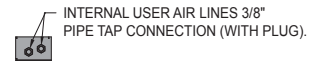
## VIEW C



## VIEW D



## VIEW E



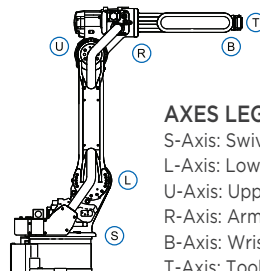
## SPECIFICATIONS

Axes	Maximum motion range [°]	Maximum speed [°/sec.]	Allowable moment [N•m]	Allowable moment of inertia [kg•m <sup>2</sup> ]	Controlled axes	6
S	±150	80	-	-	Maximum payload [kg]	400
L	+20/-122	80	-	-	Repeatability [mm]	±0.5
U	+120/-9	80	-	-	Horizontal reach [mm]	3,518
R	±360	80	1,960	150	Vertical reach [mm]	4,909
B	±120	80	1,960	150	Protection (IP rating) wrist	IP67
T	±360	160	833	50	Weight [kg]	2,500
					Power requirements	3-phase; 240/480/575 VAC at 50/60 Hz
					Power rating [kVA]	8.5

\* The MLX300 software option is not available for use with arc or spot welding, coating, dispensing, cutting or other "path control" applications. MLX300 fieldbus cards, I/O cards and vision equipment must be purchased separately from the supplier. All peripherals are programmed using a PLC.

## OPTIONS

- Extended length manipulator cables
- MotoSight™ - easy to integrate vision software
- Robot risers and base plates
- Wide variety of fieldbus hardware



## AXES LEGEND

- S-Axis: Swivel Base
- L-Axis: Lower Arm
- U-Axis: Upper Arm
- R-Axis: Arm Roll
- B-Axis: Wrist Bend
- T-Axis: Tool Flange

Yaskawa America, Inc.  
Motoman Robotics Division

100 Automation Way  
Miamisburg, OH 45342  
Tel: 937.847.6200  
Fax: 937.847.6277

[motoman.com](http://motoman.com)

# YASKAWA